

Contents 目录

企业简介02
COMPANY PROFILE
起重电磁铁概论04
BRIEF ON LIFTING ELECTROMAGNET
废钢类起重电磁铁07
LIFTING ELECTROMAGNET FOR STEEL SCRAPS
MW5系列SERIES MW507
MW5常温型 Normal Temperature Type
MW5高频型 Series MW5 High Frequency Type
MW5高温型 Series MW5 High Temperature Type
MW5强磁型 Series MW5 Strong Magnet Type
MW61系列SERIES MW6110
MW61常温型 Series MW61 Normal Temperature Type
MW61强磁型 Series MW61 Strong Magnetic Type
方坯、梁坯、板坯吊运用电磁铁12
LIFTING ELECTROMAGNET FOR BILLET, GIRDER BILLET
AND SLAB
MW22系列SERIES MW2212
MW22常温型 Series MW22 Normal Temperature Type
MW22高温型 Series MW22 High Temperature Type
MW22超高温型 Series Mw22 Over High Temperature Type
MW32系列 SERIES MW 3215
MW32常温型 Series MW32 Normal Temperature Type
MW32高温型 Series MW32 High Temperature Type
MW32超高温型 Series MW32 Over-high Temperature Type
MW42系列SERIES MW4217
MW42常温型 Series MW42 Normal Temperature Type
MW42高温型 Series MW42 High Temperature Type
MW42超高温 Series MW42 Over-high Temperature Type
MW92系列 SERIES MW9219
MW92常温型 Series MW92 High Temperature Type
MW92高温型 Series MW92 High Temperature Type
高速线材（盘圆）专用型起重电磁铁20
LIFTING ELECTROMAGNET FOR HIGH SPEED WIRE
(COILED BAR)
MW19系列SERIES MW19.....20
MW19常温型 Series MW19 Normal Temperature Type
MW19高温型 Series MW19 High Temperature Type
MW22-□54系列SERIES MW22-□5421
捆扎螺纹钢、型钢专用起重电磁铁22
LIFTING ELECTROMAGNET FOR BUNDLED REBAR AND
PROFIED STEEL
MW18系列 SERIES MW1822
MW18常温型 Series MW18 Normal Temperature Type
MW18高温型 Series MW18 High Temperature Type
MW38系列 SERIES MW3824
MW38常温型 Series MW38 Normal temperature Type
MW38高温型 Series MW38 High Temperature Type

吊运管坯、钢管用起重电磁铁26
LIFTING ELECTROMAGNET FOR ROUND AND STEEL PIPE
MW25系列 SERIES 2526
MW25常温型 Series MW25 Normal Temperature Type
MW25高温型 Series MW25 High Temperature Type
MW25超高温 Series MW25 Over-high Temperature Type
MW35系列 SERIES MW3529
MW35常温型 Series MW35 Normal Temperature Type
MW35高温型 Series MW35 High Temperature Type
MW35超高温型 Series MW35 Over-high Temperature Type
MW85系列 SERIES MW8531
吊运重轨、型钢用起重电磁铁32
LIFTING ELECTROMAGNET FOR HEAVY RAIL AND
PROFIED STEEL
MW17系列 SERIES MW1732
MW17常温型 Series MW17 Normal Temperature Type
MW17高温型 High temperature type series MW17
MW27系列 SERIES MW2733
MW27常温型 Series MW27 Normal Temperature Type
MW27高温型 High temperature type series MW27
MW37系列 SERIES MW3734
MW37常温型 Series MW37 Normal Temperature Type
MW37高温型 Series MW37 High temperature type
吊运钢板用起重电磁铁36
LIFTING ELECTROMAGNET FOR LIFTING AND
TRANSPORTING STEEL PLATE
MW84-□35系列 SERIES MW84-□3536
MW84-□40系列 SERIES MW84-□4038
MW84-□50系列 SERIES MW84-□5038
MW84-□65系列 SERIES MW84-□6539
MW04系列 SERIES MW0440
吊运钢板卷专用电磁铁41
LIFTING ELECTROMAGNET FOR COILED STEEL
MW16吸吊卧卷系列 SERIES MW16 FOR LIFTING HORIZONTAL
COIL41
MW26吸吊立卷系列 SERIESMW26 FOR LIFTING VERTICAL
COIL42
MW36吸吊立卷系列 SERIES MW36 FOR LIFTING VERTICAL
COIL42
MW96吸吊立、卧卷系列 SERIESMW96 FOR LIFTING VERTICAL
& HORIZONTAL COIL42

吊运厚板专用电磁铁43
LIFTING ELECTROMAGNET FOR THICK PLATE
MW03系列 SERIES MW0343
MW03常温型 Series 03 Normal Temperature Type
MW03高温型 Series MW03 High Temperature Type
MW03超高温 SeriesMW03 Over- high Temperature Type
翻转、侧吊用电磁铁45
LIFTING ELECTROMAGNET FOR TURNING AND SIDE HUNG
MW73系列 SERIES MW7345
MW83系列 SERIES MW83.....45
定尺电磁铁46
FIXED-LENGTH ELECTROMAGNET
MW15系列 SERIES MW1546
ML01系列 SERIES ML0146
工具及其它电磁铁47
TOOLS AND OTHER ELECTROMAGNETS
MWE带蓄电池 SERIES MWE WITH BATTERY47
LMS炉盖电磁铁 SERIES LMS FOR FURNACE COVER47
磁力对中电磁铁 LLFTING ELECTROMAGNET OF MAGNETIC FORCE
CENTERING49
翻转臂用翻转电磁铁 LIFTING ELECTROMAGNET OF TURNING ARM49
永磁起重器50
PERMANENT MAGNET LIFTER
YX1系列 SERIES YX151
YX2系列 SERIES YX252
YX3系列 SERIES YX354
YX4 系列 SERIES YX455
YX5系列 SERIES YX556
电磁铁常用连接方式57
MAGNET CONNECTION MODE
电磁铁配套控制设备58
AUXILIARY CONTROL EQUIPMENT
普通电控 COMMON ELECTRIC CONTROL EQUIPMENT58
STQ(M)L定电压控制方式整流控制设备 Commutating Control Equipment
Series STQ(M)L In Rated Voltage
STQOL系列强励磁控制方式整流控制设备 Series STQOL Rectifier Control
Equipment with Strong Field
DKP系列整流控制设备 Series DKP Rectification control equipment
停电保磁设备 Battery Backup Equipment
无触点电控 NON-CONTACT ELECTRIC CONTROL EQUIPMENT70
VTONC系列无触点强励磁控制方式整流控制设备 Rectification control unit
series VTONC in non-contact strong field excitation control mode
VTB系列无触点停电保磁设备 SeriesVTB Non-contact Backup Battery
Equipment
VTBT系列无触点调磁保磁设备 Non-contact magnetism regulating &
sustaining equipment series VTBT

概述 General

起重电磁铁是以被吸物作为衔铁的一种特殊电磁铁。它是利用电与磁的物理量吸住铁磁性物质的设备，是冶金、矿山、机械、造船、交通运输等行业吊运钢铁等导磁性物料不可缺少的起重工具，在某些领域，它又用作电磁机械手、磁力对中、棒材定尺用等诸多方面。经过多年的推广应用，起重电磁铁的用途已广泛拓展，由于被吸物的多样性，起重电磁铁的结构、磁路分布、制造工艺亦不同，故形成了多个系列产品，针对性很强。

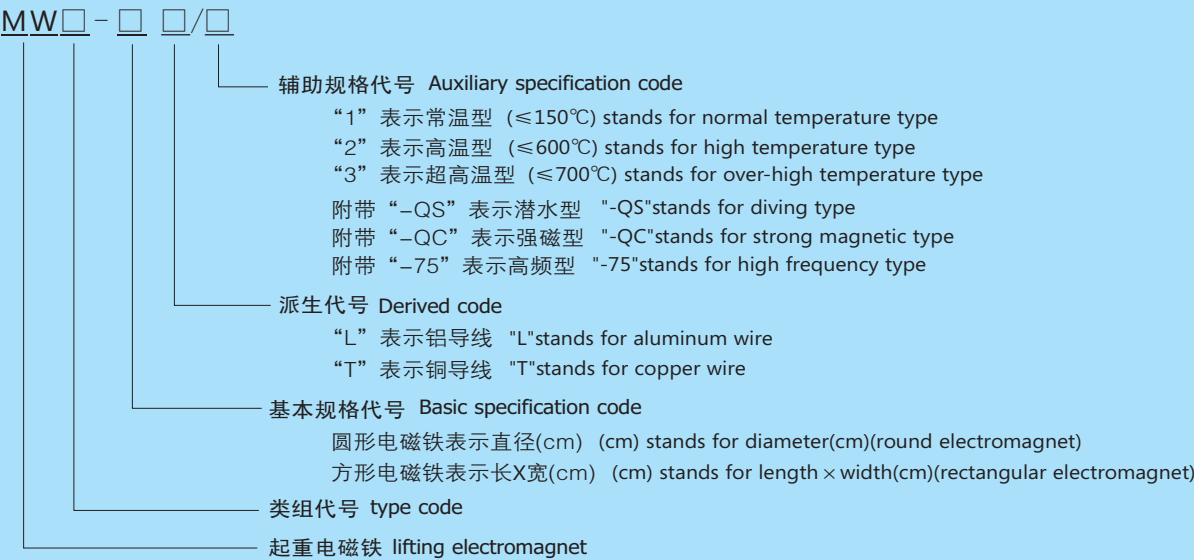
Lifting Electromagnet is special equipment which utilizes the electric & magnetic physical quantity to lift attached materials and has become indispensable when to lift and transport ferromagnetism materials in lines of metallurgy, mine, machinery, shipbuilding and transportation, etc., and it can also be used as electromagnetic manipulator, magnetic force centering, bar length fixing and so on in some fields. As the attached materials are diverse, the electromagnet structure, magnetic circuit and manufacturing process are also different, so there are many series of strong targeted products.

特点 Features

- 1、采用全密封结构，防潮性能好；非磁性保护板采用轧制锰板，可焊性好，隔磁性能好，耐磨、耐冲击。
- 2、通过消化国外先进技术，并经过完善及创新，及经计算机优化设计，产品结构合理、自重轻、吸力大、能耗低。
- 3、励磁线圈经特殊工艺处理，提高了线圈的电气和机械性能，绝缘材料耐热等级达到C级，使用寿命长。
- 4、普通型电磁铁的额定持续率由过去的50%提高到60%，提高了电磁铁的使用效率。
- 5、超高温型电磁铁采用独特的隔热和防热辐射措施，其被吸物温度过去的600℃提高到700℃，扩展了电磁铁的适用范围。
- 6、提供控制柜、电缆卷筒等辅助设备，成套性好。
- 7、安装、运行、维护简便。

1. Adopt totally sealing structure with good property of moisture-proofing. Non-magnetic fender is made of rolled Mn plate which has good property of weldability, magnetism-isolation, wear-resistant and shockproof.
2. Overseas technology has been introduced, improved, innovated, as well as get optimum designed by computer to make our products reasonable structure, light self-weight, strong attraction force and low energy consumption.
3. The energizing coils have been processed by special technology and thus its property of electrical and mechanical gets enhanced, Heat-resistant of insulating material reaches grade C and service life is long.
4. Rated duty cycle of normal electromagnet gets increased from 50% in the past to 60%, thus working efficiency gets improved.
5. Over-High temperature electromagnet adopts unique isolation from heat and radiation, the temperature of attached materials gets increased from 600°C in the past to 700°C, which expands application range of electromagnet.
6. A full set of auxiliary unit such as Control Cubicle, Cable Reel, etc can be provided as well.
7. Installation, operation and maintainance are convenient

型号说明 Model Designation



选型指南 Guide for Model Selection

我公司磁起重产品众多，针对性较强，请您按以下选型指南对照选型
Our company has various kinds of products for meeting specific requirement. Please choose the right model according to the following guide.

1、根据被吸物选择合适的系列，可参照下表：
Choose the suitable series according to the attached materials, refer to the table below.

电磁铁系列 Series of electromagnet	被吸物举例 Examples of attached materials	备 注 Remark
5	铸铁锭、钢球、各类废钢、铁粉 cast iron ingot, steel ball, steel scraps, iron powder	散料或打包废钢 balk cargo or packed scraps
61	各类废钢 various steel scrap	为窄小的车箱状容器量身定做 made for narrow trunk-shaped container
19	盘圆（高线）专用 special for coiled bar(high speed wire)	与盘圆两点接触结构、重量轻、吸力大 contacted with two points of the wire rod, light, large attraction
18	捆轧螺纹钢、小圆钢、型材 Boundled Rebar, small round steel, profiled steel	双线圈结构、透磁深度大 double coils, deep penetration
38	捆轧螺纹钢、小圆钢、型材 Boundled Rebar, small round steel, profiled steel	标准化、系列化、透磁深度大 standardization, seriation and deep penetration
22	方坯、矩形坯、钢锭、型钢等 billet, bloom, steel ingot, profiled steel, etc	标准化，系列化 standardization, seriation
32	方坯、矩形坯、钢锭、型钢等 billet, bloom, steel ingot, profiled steel, etc	标准化、系列化、透磁深度大 standardization, seriation and deep penetration
42	方坯、矩形坯、钢锭、型钢等 billet, bloom, steel ingot, profiled steel, etc	狭小面积产生强大吸力 Strong attracting force is formed in narrow area
92	方坯、矩形坯、钢锭、型钢等 billet, bloom, steel ingot, profiled steel, etc	活动磁极结构 movable magnetic pole structure
25	钢管、圆坯等 steel pipe, round, etc	标准化、系列化 standardization, seriation
35	钢管、圆坯等 steel pipe, round, etc	标准化、系列化、透磁深度大 standardization, seriation and deep penetration
85	特大口径钢管 Super-dia pipe	标准化、系列化、专用型、大口径设计 standardization, seriation,special design for larger dia

17	型钢、重轨、异形坯等 profiled steel, heavy rail, beam blank, etc	标准化，系列化 standardization, seriation
27	型钢、重轨、异形坯等 profiled steel, heavy rail, beam blank, etc	自重轻，多合联吊超长重轨 light self-weight, overlength heavy rail by combined units
37	型钢、重轨、异形坯等 profiled steel, heavy rail, beam blank, etc	专业型、透磁深度大 special type and deep penetration
03	大型钢锭、连铸板坯、厚钢板 large steel ingot, cocast slab caster, thick steel plate	专为吊运厚料设计 for thick materials
84	宽厚板、中厚板专用 for wide & thick plate and medium-thick plate	含超薄（ $\delta \leq 4\text{mm}$ ）钢板；大型可吊特多张系列 includes ultrathin ($\delta \leq 4\text{mm}$) steel plate; series large-size type can lift many sheets
04	单张钢板 single sheet	工作机械上的电磁夹具、切割工位特适用 suitable for electromagnetic clamp and cutting post
16、26、36	钢带卷专用 For coiled steel	吊运对卷无损伤，最理想吊具，拥有专利两项 Coiled steel will no get damaged during being lift; the most ideal lifting tool; we own two patents

- 2、起重机规格、吨位、起升高度、起升主钩抱闸类型，容量。——建议提供。
The specification, tonnage, hoist height, brake type of hook, capacity. — should be provided.
- 3、根据物料温度选择常温型、高温型或超高温型，低于150℃为常温型，高于150℃低于600℃为高温型，超过600℃为超高温型。
Choose normal or high or super-high temperature type according to the material's temperature. If below 150℃ choose normal type; between 150℃ and 600℃ high type; above 600℃ but with a limit under 700℃, super-high type.
- 4、作业频率。超过60%为高频型。
Duty cycle: when exceed 60%, choose high frequency type.
- 5、液体中吸料选择潜水型，提供液体介质和潜水深度。
When operation is in liquid, please choose diving type and provide us with liquid medium and diving depth.
- 6、吊运型材、板材等物料时提供物料几何参数（长、宽、厚或直径等）及须吊根数或张数、捆数等。
Please provide with geometry parameters (such as length, width, depth, diameter and so on.) and number of pieces or bundles to lift when lift section material, sheet material.
- 7、配套设备选型
Pattern Selection of corollary equipments.

- 7.1 单台使用时，按消耗功率（电流）选择控制柜及辅助设备；多合联用时，按联用台数的消耗功率（电流）之和选择。
For single unit, choose control cubicle and other assistant equipment according to consumed power (current); for combined unit, we need total amount of comsumed power (current).
- 7.2 按起升高度确定电缆卷筒卷取长度，按电磁铁功率（电流）确定电缆卷筒容许电流，按电磁铁台数及分组情况确定电缆卷筒的芯数。
Lifting height determines the length of cable coiled on cable reel. The power of electromagnet (current) determines current tolerance of cable reel. Pieces of the electromagnets and grouping condition determines numbers of core.

8. 永磁起重器选型方法单独列出，详见《永磁起重器选型指南》
Pattern selection of permanent magnet lifter has been listed separately. See Pattern selection of permanent manget lifter.

由于客户现场情况的多样性、复杂性，以上几点可能对您选型仍有难度，您可与我公司技术部门联系，我们将为您提供最佳方案。

Owing to diversity and complexity situation at site, when you feel difficult in model selection, you can contact with our technical department and we will provide you with the optimal approach.

注：本样本提供各系列产品外型尺寸、参数仅供选型参考使用。我们将起重电磁铁按照被吸物的种类予以区分，使用户根据实际使用条件选取某系列产品，再结合被吸物的种类、质量及尺寸等条件选用相应型号的品种。

Note: All dimensions and parameters provided by this catalog are just for reference. The real size depends on actual product. We divide types of electromagnet as per different kind of materials for the convenience of customer to choose right type on base of their practical requirement.

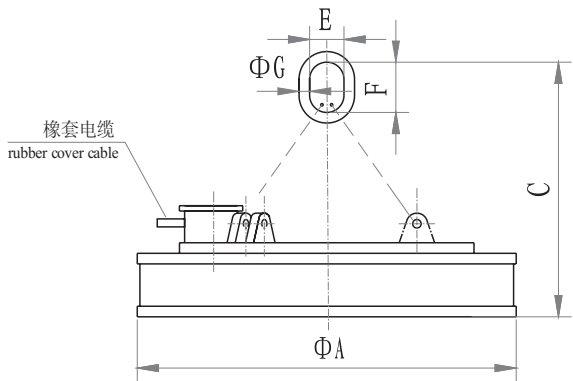


Electromagnet
起重电磁铁

KEMEIDA

废钢类起重电磁铁
Lifting Electromagnet For Steel Scraps

MW5系列 Series MW5



外形尺寸图
Overall Dimension Drawing

本系列用于吸吊铸铁锭、钢球、生铁块、机加切屑；铸造厂的各种杂铁、回炉料、切料头；打包废钢等。在炉渣处理工艺中，用于先期除去大型铁件，另外在洗煤厂吊运铁粉等。双室式出线盒，特设超厚出线盒保护板，引出电缆防扭设置。其励磁方式可以采用：额定电压DC220V方式；强励磁方式；过励磁方式。

Suitable for cast ingot, steel ball, pig iron, machine chip, for various kinds of steel scraps, return scraps, cropping, baling scraps and etc in foundry factories and for iron powder in coal washery. During slag disposal process, it can remove large size of iron at initial step. Outlet box has two chambers, an extra-thick fender and an anti-twist setting. There are three excitation options: rated voltage DC220V; strong excitation; over excitation.

MW5常温型 Series MW5 Normal Temperature Type

主要技术参数（额定电压DC-220V，通电持续率TD-60%）
Main technical data (rated voltage DC-220, duty cycle TD-60%)

型 号 Model	冷态 功率 cold-state power (kW)	电 流 A current A (冷态/热态 cold/hot state)	外形尺寸(mm) overall dimension					质量 mass (kg)	起重能力 lifting capacity (kg) (冷态/热态cold/hot state)		
			A	C	F	E	G		钢球 steel ball	铸铁锭 casting ingot	切 屑 turnings
MW5-50L/1	2.6	11.8/7.7	500	700	160	90	25	220	1200	220/130	80/65
MW5-60L/1	3.0	13.6/8.9	600	750	160	90	25	340	2000	290/170	95/80
MW5-70L/1	3.3	15/9.8	700	800	160	90	30	490	2500	380/200	120/100
MW5-80L/1	4.0	18/12	800	800	160	90	30	620	3000	480/250	150/130
MW5-90L/1	5.9	26.8/17.5	900	1090	200	125	40	800	4500	600/400	250/200
MW5-110L/1	7.7	35/22.8	1100	1140	220	150	45	1350	6500	1000/800	450/400
MW5-120L/1	10	45.5/29.5	1200	1100	220	150	45	1700	7500	1300/1000	650/500
MW5-130L/1	12	54.5/35.5	1300	1240	250	175	50	2010	8500	1400/1100	700/600
MW5-150L/1	15.6	70.9/46.1	1500	1250	350	210	60	2830	11000	1900/1500	1100/900
MW5-165L/1	16.5	75/48.8	1650	1590	370	230	75	3200	12500	2300/1800	1300/1100
MW5-180L/1	22.5	102.3/66.5	1800	1490	370	230	75	4230	14500	2750/2100	1600/1350

MW5-210L/1	28.4	129/84	2100	1860	400	250	80	7000	21000	3500/2800	2200/1850
MW5-240L/1	33.9	154/100	2400	2020	450	280	90	9000	26000	4800/3800	2850/2250
MW5-260L/1	35.6	162/105	2600	2100	450	280	90	10100	30000	6100/4900	3600/3850
MW5-280L/1	39	178/116	2800	2700	500	300	100	12450	34000	7100/5700	4450/3400
MW5-300L/1	41.6	189/123	3000	2300	500	300	100	14980	39000	8350/6700	5250/4100

注：潜水型起重电磁铁技术参数与常规型产品型相同，其中引出电缆和出线盒、焊接等作特殊工艺处理，电缆长度按定货要求。
Note: Technical data of diving type is the same as that of normal type. While some special technology like outlet cable, outlet box and welding process will be coped differently. The length of cable depends on customers' requirement



MW5高频型 Series MW5 High Frequency Type

主要技术参数（额定电压DC-220V，通电持续率TD-75%）
Main technical data (rated voltage DC-220V, duty cycle TD-75%)

型 号 Model	冷态 功率 cold-state power (kW)	电流A current A (冷态/热态 cold/hot state)	外形尺寸（mm） overall dimension					质量 mass (kg)	起重能力 lifting capacity (kg) (冷态/热态cold/hot state)		
			A	C	F	E	G		钢球 steel ball	铸铁锭 casting ingot	切 屑 turnings
MW5-50L/1-75	2.0	9.1/6	500	700	160	90	25	253	1200	220/130	80/65
MW5-60L/1-75	2.32	10.6/6.9	600	750	160	90	25	390	2000	290/170	95/80
MW5-70L/1-75	2.55	11.6/7.6	700	800	160	90	30	550	2500	380/200	120/100
MW5-80L/1-75	3.1	14.1/9.2	800	850	160	90	30	690	3000	480/250	150/130
MW5-90L/1-75	4.6	21/13.6	900	1160	200	125	40	885	4500	600/400	250/200
MW5-110L/1-75	6.1	27.7/18	1100	1270	220	150	45	1500	6500	1000/800	450/400
MW5-120L/1-75	7.4	33.6/21.9	1200	1220	220	150	45	1850	7500	1300/1000	600/500
MW5-130L/1-75	9	40.9/26.6	1300	1290	250	175	50	2280	8500	1400/1100	700/600
MW5-150L/1-75	11.3	51.4/33.4	1500	1360	350	210	60	3180	11000	1900/1500	1100/900
MW5-165L/1-75	12.2	55.5/36	1650	1670	370	230	75	3840	12500	2300/1800	1300/1100
MW5-180L/1-75	16.3	74.1/48.2	1800	1800	370	230	75	4690	14500	2750/2100	1600/1350
MW5-210L/1-75	21.7	98.6/64.1	2100	1900	400	250	80	7500	21000	3500/2800	2200/1850
MW5-240L/1-75	25.9	117.7/76.5	2400	2100	450	280	90	9800	26000	4800/3800	2850/2250
MW5-260L/1-75	27.5	125/83	2600	2150	450	280	90	11000	30000	6100/4900	3600/2850
MW5-280L/1-75	30.5	139/90	2800	2250	500	300	100	13600	34000	7100/5700	4450/3400
MW5-300L/1-75	32.5	148/96	3000	2350	500	300	100	16500	39000	8350/6700	5250/4100

MW5高温型 Series MW5 High Temperature Type

主要技术参数 高温型（700℃以下，额定电压DC-220V，通电持续TD-60%）
Main technical data (rated voltage DC-220V, duty cycle TD-60%)

型 号 Model	冷态 功率 cold-state power (kW)	电流A current A (冷态/热态 cold/hot state)	外形尺寸 (mm) overall dimension					质量 mass (kg)	起重能力 lifting capacity (kg) (冷态/热态cold/hot state)		
			A	C	F	E	G		钢球 steel ball	铸铁锭 casting ingot	切 屑 turnings
MW5-50L/2	2.0	9.1/6	500	700	160	90	25	220	1200	220/130	80/65
MW5-60L/2	2.3	10.5/6.8	600	750	160	90	25	395	2000	290/170	95/80
MW5-70L/2	2.8	12.7/8.3	700	800	160	90	30	520	2500	380/200	120/100
MW5-80L/2	3.54	16.1/10.5	800	850	160	90	30	650	3000	400/250	150/130
MW5-90L/2	4.5	20.5/13.3	900	1160	200	125	40	900	4500	600/400	250/200
MW5-110L/2	6	27.3/17.7	1100	1270	220	150	45	1500	6500	1000/800	450/400
MW5-120L/2	7.4	33.6/21.9	1200	1220	220	150	45	1800	7500	1300/1000	600/500
MW5-130L/2	8.9	40.5/26.3	1300	1290	250	175	50	2100	8500	1400/1100	700/600
MW5-150L/2	11.3	51.4/33.4	1500	1360	350	210	60	3200	11000	1900/1500	1100/900
MW5-165L/2	13.3	60.5/39.3	1650	1670	370	230	75	3500	12500	2300/1800	1300/1100
MW5-180L/2	20.9	95/61.8	1800	1800	370	230	75	4500	14500	2750/2100	1600/1350
MW5-210L/2	22.9	104.1/67.7	2100	1900	400	250	80	7500	21000	3500/2800	2200/1850
MW5-240L/2	26	118.2/76.8	2400	2100	450	280	90	9800	26000	4800/3800	2850/2250
MW5-260L/2	27.5	125/83	2600	2150	450	280	90	11000	30000	6100/4900	3600/2850
MW5-280L/2	30	136/89	2800	2200	500	300	100	13700	34000	7100/5700	4450/3400
MW5-300L/2	32	146/95	3000	2350	500	300	100	16480	39000	8350/670	5250/4100

MW5强磁型 Series MW5 Strong Magnet Type

针对钢铁厂的大容量炼钢炉，频繁装卸各种轻杂废料的需要，我公司技术人员通过创新开发出了大型强磁型电磁铁，其吸力高出普通型约30%以上。特别适用于电炉炼钢上料流程。已广泛应用于国内各大钢铁公司，用户反映良好。

We have developed a large size of strong magnet with attraction force 30% higher than normal type for frequently loading and discharging some light-weight scraps at big capacity melting furnaces. They are especially suitable for feeding during electric steel-making process. The products have already been applied widely in various national steel companies and got good feedback.

主要技术参数（额定电压DC-220V） Main technical data (rated voltage DC-220V)

型 号 Model	电压 voltage (V)	冷态 功率 cold-state power (kW)	电流 A current A (冷态/热态 cold/hot state)	起重能力 lifting capacity (kg) (冷态/热态cold/hot state)			外形尺寸 (mm) overall dimension					质量 mass (kg)
				钢球 steel ball	铸铁锭 casting ingot	切 屑 turnings	A	C	F	E	G	
MW5-165L/1-QC	400/200	17.6	80/52	13500	2650/2100	1500/1300	1650	1730	370	230	75	4250
MW5-180L/1-QC	400/200	22.8	104/67.4	16000	3100/2400	1900/1600	1800	1870	370	230	75	5600
MW5-210L/1-QC	400/200	32.6	148/96	23100	4000/3200	2600/2180	2100	1980	400	250	80	8300
MW5-240L/1-QC	400/200	43	195/127	28600	5500/4400	3360/2650	2400	2200	450	280	90	10800

废钢类起重电磁铁

Lifting Electromagnet for Steel Scraps

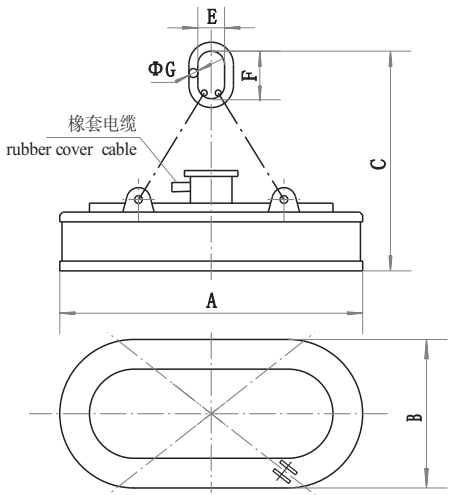


MW61系列

Series MW61

本系列用于窄小的车箱状容器内高效地装卸废钢铁。根据车箱形状量身定做，对于吊运废钢，电磁铁一般设计成两头半圆形的结构，故又称椭圆形电磁铁。由于各个钢铁企业的料斗尺寸不一，故规格在不断增加中，以下所列表型号仅供参考。特殊尺寸可定制。

It can load & unload steel scraps efficiently at narrow trunk-shaped container and is called oval shape electromagnet owing to its special half-round structure. As chute dimensions in various steel companies are different, the following sample is just for your reference. And we can make the specific one as per your requirement.



外形尺寸图 Overall Dimension Drawing

MW61常温型

Series MW61 Normal Temperature Type

主要技术参数（额定电压DC-220V）Main technical data (rated voltage DC-220V)

型 号 model	冷态功率 cold-state power (kW)	冷态电流 cold-state current (A)	外形尺寸 overall dimension (mm)						质量 mass (kg)	起重能力 lifting capacity (kg) (冷态/热态 cold/hot state)	
			A	B	C	F	E	G		铸铁锭 casting ingot	切屑 turnings
MW61-400240L/1-75	40.01	181.9	4000	2400	1600	350	200	65	15600	7000/6000	3500/3000
MW61-380160L/1-75	30.36	138	3800	1600	2380	410	260	90	9700	6000/5000	3000/2500
MW61-350220L/1-75	42.5	193	3500	2200	1955	400	300	90	12000	6000/5000	3000/2500
MW61-300210L/1-75	34.5	157.1	3000	2100	1810	400	250	80	10500	5000/4000	2500/2000
MW61-300150L/1-75	28	127.2	3000	1500	1550	390	210	70	7660	3500/2800	1800/1500
MW61-250200L/1-75	24.6	136.5	2500	2000	2000	390	280	90	8400	5000/4200	2300/1800
MW61-250160L/1-75	29.2	133	2500	1600	1700	310	210	60	7500	4800/3900	2400/1950
MW61-250150L/1-75	24.2	110	2500	1500	1700	300	210	60	5936	4000/3200	2000/1600
MW61-240120L/1-75	24.57	112	2400	1200	1680	250	180	60	3970	3000/2400	1500/1200

MW61-200150L/1-75	17.93	81.5	2000	1500	1300	250	180	70	4200	2200/1900	1000/800
MW61-300150L/1	32.3	146.7	3000	1500	1530	390	210	70	6086	3500/2800	1800/1500
MW61-300100L/1	23.5	107	3000	1000	1530	350	210	60	5800	3000/2400	1500/1200
MW61-240100L/1	19.9	90.5	2400	1000	1800	250	180	60	3600	2500/1700	1300/900
MW61-220120L/1	23.4	106.3	2200	1200	1695	250	180	60	3650	2800/2240	1400/1120
MW61-200150L/1	21.01	95.5	2000	1500	1560	250	180	60	4000	2500/2000	1300/1000
MW61-200120L/1	15.68	73.26	2000	1200	1560	210	150	60	3650	2100/1000	1050/950
MW61-200100L/1	17.13	77.87	2000	1000	1450	300	190	60	2700	2000/1800	1000/900
MW61-140100L/1	12	55	1400	1000	1120	220	140	50	2350	1400/1100	700/600
MW61-11070L/1	7.7	35.1	1120	720	1020	220	150	45	1150	1000/800	600/540

MW61强磁型

Series MW 61 Strong Magnetic Type

主要技术参数（额定电压DC-220V）Main technical data (rated voltage DC-220V)

型 号 model	冷态功率 cold-state power (kW)	冷态电流 cold-state current (A)	外形尺寸 overall dimension (mm)						质量 mass (kg)	起重能力 lifting capacity (kg) (冷态/热态 cold/hot state)	
			A	B	C	F	E	G		铸铁锭 casting ingot	切屑 turnings
MW61-23090L/1-75-QC	18.5	84.3	2300	900	1800	250	180	60	3650	2500/1700	1300/900
MW61-220150L/1-75-QC	20.8	94.5	2240	1540	1780	360	220	70	5600	3000/2400	1500/1200

注：准确的说，由于废钢铁种类很多（在《GB 4223-2004 废钢铁》中，就分为诸于重型废钢、中型废钢、小型废钢、统料型废钢、轻料型废钢等多种），其形状、大小、重量、堆密度均不一样，故电磁铁磁路设计上应有差异。若电磁铁吸料是以某一种废钢为主，我公司可为您定制，充分发挥其最大效力。

Note: Exactly speaking, there are various kinds of steel scraps (In "Steel Scrap GB 4223-2004", they are divided into heavy type, medium type, small type, aggregate type, light type, etc.). As the figure, size, weight and bulk density are different, the magnetic circuit of the electromagnet should be designed separately. However we can produce the most suitable one for you if you let us know the main content in the scraps to ensure the best performance.



方坯、梁坯、板坯吊运用电磁铁

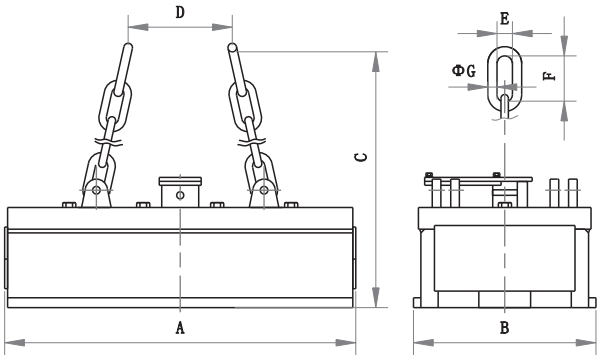
Lifting Electromagnet
for Billet, Girder Billet and Slab



MW22系列 Series MW22

本系列为应用最为广泛的长方形电磁铁，主要适用于吊运方坯、钢锭和大型初轧坯等，也可用于吊运圆坯、型钢等。针对不同类型的钢材，采用不同的磁路设计。

The most widely used series whose shape is rectangle especially suitable for lifting and transporting billet , steel ingot, bloom, etc., and round , profiled steel as well. Different magnetic circuits are designed for different steels.



外形尺寸图
Overall Dimension Drawing

MW22常温型 Series MW22 Normal Temperature Type

主要技术参数（额定电压DC-220V，通电持续率TD-60%）

Main technical data (rated voltage DC-220V, duty cycle TD-60%)

型 号 model	冷态 功率 cold- state power (kW)	冷态 电流 cold- state current (A)	外形尺寸 (mm) overall dimension							质量 mass (kg)	起重能力举例 (两台联用) lifting capacity of 2 units (An Example)			
											150方坯 Billet		200方坯 Billet	
			A	B	C	D	E	F	G		长度 length(m)	根数 piece(s)	长度 length(m)	根数 piece(s)
MW22-9065L/1	4.85	22.0	900	650	1050	500	110	180	35	1420	11	5	9	4
MW22-11065L/1	5.6	25.5	1100		1050	500	110	180	40	1720		6		5
MW22-14065L/1	6.9	31.3	1400		1100	600	125	200	45	2150		8		6
MW22-17065L/1	8.1	36.5	1700		1200	600	125	200	50	2650		10		7
MW22-21065L/1	10.1	45.7	2100		1250	700	140	250	55	3110		12		9
MW22-11070L/1	5.6	25.5	1100	700	1050	500	110	180	40	1860	12	6	10	5
MW22-14070L/1	6.9	31.3	1400		1100	600	125	200	45	2330		8		6
MW22-17070L/1	8.9	40.3	1700		1200	600	125	200	50	2820		10		7
MW22-21070L/1	10.2	45.8	2100		1250	700	140	250	55	3290		12		9
MW22-11080L/1	5.9	26.8	1100		800	1100	600	140	250	45		2160		14
MW22-14080L/1	7.4	33.4	1400	1200		600	125	200	50	2700	8	6		
MW22-17080L/1	9.03	41	1700	1250		600	140	250	55	3210	10	7		
MW22-21080L/1	10.2	45.8	2100	1350		700	140	250	60	3840	12	9		

MW22-14090L/1	7.3	33	1400	900	1250	600	140	250	55	3010	16	8	12.5	6
MW22-17090L/1	8.9	40.5	1700		1350	600	140	250	60	3560		10		7
MW22-21090L/1	10.0	45.5	2100		1350	700	160	250	65	4280		12		9
MW22-25090L/1	12.0	54.4	2500		1350	600	160	250	70	5130		15		11
MW22-140100L/1	7.4	33.5	1400	1000	1350	600	140	250	60	3430	17.5	8	14	6
MW22-170100L/1	8.9	40.1	1700		1350	700	160	250	65	3930		10		7
MW22-210100L/1	11.1	50.3	2100		1350	700	160	250	70	4910		12		9
MW22-250100L/1	13.1	59.2	2500		1400	700	160	250	75	5860		15		11

MW22高温型 Series MW22 High Temperature Type

主要技术参数（额定电压DC-220V，通电持续率TD-60%）

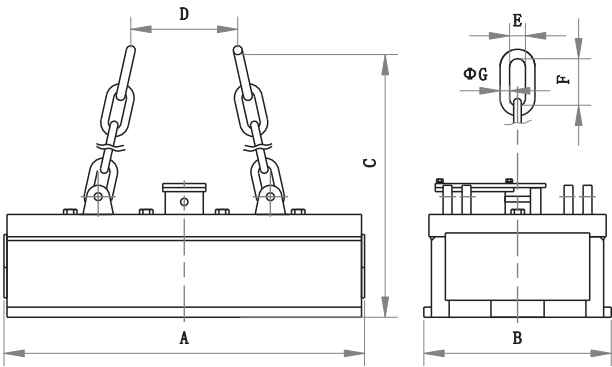
Main technical data (rated voltage DC-220V, duty cycle TD-60%)

型 号 model	冷态 功率 cold- state power (kW)	冷态 电流 cold- state current (A)	外形尺寸 (mm) overall dimension							质量 mass (kg)	起重能力举例 (两台联用) lifting capacity of 2 units (An Example)			
											150方坯 Billet		200方坯 Billet	
			A	B	C	D	E	F	G		长度 length(m)	根数 piece(s)	长度 length(m)	根数 piece(s)
MW22-9065L/2	4.7	22.0	900	650	1050	500	110	180	35	1380	11	5	9	4
MW22-11065L/2	5.5	25.0	1100		1050	500	110	180	40	1680		6		5
MW22-14065L/2	7.1	32.3	1400		1100	600	125	200	45	2200		8		6
MW22-17065L/2	8.8	36.4	1700		1200	600	125	200	50	2710		10		7
MW22-21065L/2	11	50.0	2100		1250	700	140	250	55	3180		12		9
MW22-11070L/2	5.7	26.0	1100	700	1050	500	110	180	40	1820	12	6	10	5
MW22-14070L/2	7.1	32.3	1400		1100	600	125	200	45	2380		8		6
MW22-17070L/2	9.1	41.4	1700		1200	600	125	200	50	2900		10		7
MW22-21070L/2	11.2	50.9	2100		1250	700	140	250	55	3380		12		9
MW22-11080L/2	6.0	27.3	1100		1100	600	140	250	45	2190		6		5
MW22-14080L/2	7.5	34.1	1400	800	1200	600	125	200	50	2760	14	8	11	6
MW22-17080L/2	8.8	40	1700		1250	600	140	250	55	3150		10		7
MW22-21080L/2	10.5	47.7	2100		1350	700	140	250	60	3890		12		9
MW22-14090L/2	7.6	33.6	1400	900	1250	600	140	250	55	3060	16	8	12.5	6
MW22-17090L/2	9.6	43.5	1700		1350	600	140	250	60	3630		10		7
MW22-21090L/2	11.2	50.9	2100		1350	700	160	250	65	4360		12		9
MW22-25090L/2	12.2	55.5	2500		1350	600	160	250	70	5220		15		11
MW22-140100L/2	7.4	33.6	1400	1000	1350	600	140	250	60	3510	17.5	8	14	6
MW22-170100L/2	9.5	43.2	1700		1350	700	160	250	65	4120		10		7
MW22-210100L/2	11.3	51.4	2100		1350	700	160	250	70	5010		12		9
MW22-250100L/2	12.3	55.9	2500		1400	700	160	250	75	5970		15		11

方坯、梁坯、板坯吊运用电磁铁
Lifting Electromagnet
for Billet, Girder Billet and Slab



MW32系列 Series MW32



外形尺寸图
Overall Dimension Drawing

本系列为应用广泛的长方形电磁铁，主要适用于吊运方坯、钢锭和大型初轧坯等，也可用于吊运圆坯、型钢等。针对不同类型的钢材，采用不同的磁路设计。具有透磁深的特点。

This series are most widely used rectangular electromagnets, suitable for lifting and transporting square billet, steel ingot, large blooming and so on, and also used for lifting and transporting round, profiled bar and so on. Different magnetic circuits are adopted for different type of steels, with the property of farther permeability depth.

MW22超高温型 Series MW22 super high temperature type

主要技术参数（额定电压DC-220V，通电持续率TD-60%）
Main technical data (rated voltage DC-220V, duty cycle TD-60%)

型 号 model	冷态 功率 cold- state power (kW)	冷态 电流 cold- state current (A)	外形尺寸（mm） overall dimension							质量 mass (kg)	起重能力举例（两台联用） Example for lifting capacity (combination of two units)			
			A	B	C	D	E	F	G		150方坯 billet		200方坯 billet	
											长度 length(m)	根数 piece(s)	长度 length(m)	根数 piece(s)
MW22-9065L/3	5.3	24.1	900	650	1100	500	110	180	35	1520	9	5	7.5	4
MW22-11065L/3	6.2	28.2	1100		1100	500	110	180	40	1840		6		5
MW22-14065L/3	7.7	35.0	1400		1150	600	125	200	45	2290		8		6
MW22-17065L/3	9.5	43.2	1700		1250	600	125	200	50	2840		10		7
MW22-21065L/3	11.9	54.1	2100	700	1300	700	140	250	55	3330	9.5	12	8.0	9
MW22-11070L/3	6.1	27.7	1100		1100	500	110	180	40	2000		6		5
MW22-14070L/3	7.6	34.5	1400		1150	600	125	200	45	2500		8		6
MW22-17070L/3	9.7	44.1	1700		1250	600	125	200	50	3020		10		7
MW22-21070L/3	11.8	53.6	2100	800	1300	700	140	250	55	3290	11.5	12	9.0	9
MW22-11080L/3	6.5	29.5	1100		1150	600	140	250	45	2320		6		5
MW22-14080L/3	8.05	36.6	1400		1250	600	125	200	50	2890		8		6
MW22-17080L/3	9.6	43.6	1700		1300	600	140	250	55	3450		10		7
MW22-21080L/3	11.8	53.6	2100	900	1400	700	140	250	60	4150	13.0	12	10.0	9
MW22-14090L/3	8.0	36.4	1400		1300	600	140	250	55	3010		8		6
MW22-17090L/3	9.9	45.0	1700		1400	600	140	250	60	3800		10		7
MW22-21090L/3	11.7	53.2	2100		1400	700	160	250	65	4580		12		9
MW22-25090L/3	14.1	64.1	2500	1000	1400	600	160	250	70	5490	14.0	15	11.5	11
MW22-140100L/3	8.2	37.3	1400		1400	600	140	250	60	3670		8		6
MW22-170100L/3	9.9	45.0	1700		1400	700	160	250	65	4210		10		7
MW22-210100L/3	12.4	56.4	2100		1400	700	160	250	70	5250		12		9
MW22-250100L/3	15.1	68.6	2500		1450	700	160	250	75	6270		15		11

MW32常温型 Series MW32 Normal Temperature Type

主要技术参数（额定电压DC-220V，通电持续率TD-60%）
Main technical data (rated voltage DC-220V, duty cycle TD-60%)

型 号 model	冷态 功率 cold- state power (kW)	冷态 电流 cold- state current (A)	外形尺寸（mm） overall dimension							质量 mass (kg)	起重能力举例（两台联用） Example for lifting capacity (combination of two units)			
											150方坯 billet		200方坯 billet	
			A	B	C	D	E	F	G		长度 length(m)	根数 piece(s)	长度 length(m)	根数 piece(s)
MW32-90110L/1	6.4	29	900	1100	1000	500	110	180	40	1670	15	5	12	4
MW32-110110L/1	7.9	35.8	1100		1000	500	125	200	45	2030		6		5
MW32-140110L/1	9.8	44.5	1400		1050	500	125	200	50	2510		8		6
MW32-110120L/1	8.2	37.3	1100	1200	1050	500	125	200	50	2470	18.5	6	15	5
MW32-140120L/1	9.6	43.5	1400		1100	600	140	250	55	3080		8		6
MW32-170120L/1	12.4	56	1700		1150	700	140	250	60	3600		10		7
MW32-140130L/1	10.2	46.4	1400	1300	1150	600	140	250	60	3650	22	8	17.5	6
MW32-170130L/1	12.2	55.1	1700		1200	700	160	250	65	4280		10		7
MW32-210130L/1	15.1	68.4	2100		1250	700	160	250	70	5350		12		9

方坯、梁坯、板坯吊运用电磁铁
Lifting Electromagnet
for Billet, Girder Billet and Slab

MW32高温型 Series MW32 High Temperature Type

主要技术参数（额定电压DC-220V，通电持续率TD-60%）
Main technical data (rated voltage DC-220V, duty cycle TD-60%)

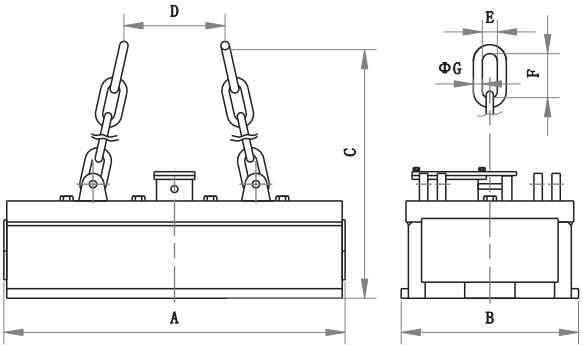
型 号 model	冷态 功率 cold- state power (kW)	冷态 电流 cold- state current (A)	外形尺寸 (mm) overall dimension							质量 mass (kg)	起重能力举例 (两台联用) lifting capacity of 2 units (An Example)			
											150方坯 billet		200方坯 billet	
			A	B	C	D	E	F	G		长度 length(m)	根数 piece(s)	长度 length(m)	根数 piece(s)
MW32-90110L/2	6.5	29.5	900	1100	1000	500	110	180	40	1710	15	5	12	4
MW32-110110L/2	8.2	37.3	1100		1000	500	125	200	45	2080		6		5
MW32-140110L/2	10.1	45.9	1400		1050	500	125	200	50	2570		8		6
MW32-110120L/2	8.5	38.6	1100	1200	1050	500	125	200	50	2530	18.5	6	15	5
MW32-140120L/2	10.1	45.9	1400		1100	600	140	250	55	3150		8		6
MW32-170120L/2	12.5	56.8	1700		1150	700	140	250	60	3680		10		7
MW32-140130L/2	10.9	49.5	1400	1300	1150	600	140	250	60	3720	22	8	17.5	6
MW32-170130L/2	12.4	56.4	1700		1200	700	160	250	65	4360		10		7
MW32-210130L/2	15.9	72.3	2100		1250	700	160	250	70	5460		12		9

MW32超高温型 Series MW32 Over-high Temperature Type

主要技术参数（额定电压DC-220V，通电持续率TD-60%）
Main technical data (rated voltage DC-220V, duty cycle TD-60%)

型 号 model	冷态 功率 cold- state power (kW)	冷态 电流 cold- state current (A)	外形尺寸 (mm) overall dimension							质量 mass (kg)	起重能力举例 (两台联用) lifting capacity of 2 units (An Example)			
											150方坯 billet		200方坯 billet	
			A	B	C	D	E	F	G		长度 length(m)	根数 piece(s)	长度 length(m)	根数 piece(s)
MW32-90110L/3	7.0	31.8	900	1100	1050	500	110	180	40	1790	13	5	10.5	4
MW32-110110L/3	8.7	39.5	1100		1050	500	125	200	45	2170		6		5
MW32-140110L/3	10.8	49.1	1400		1100	500	125	200	50	2700		8		6
MW32-110120L/3	9.1	41.4	1100	1200	1100	500	125	200	50	2660	15.5	6	13	5
MW32-140120L/3	10.6	48.2	1400		1150	600	140	250	55	3320		8		6
MW32-170120L/3	13.6	61.8	1700		1200	700	140	250	60	3870		10		7
MW32-140130L/3	11.3	51.4	1400	1300	1200	600	140	250	60	3930	18	8	15	6
MW32-170130L/3	13.5	61.4	1700		1250	700	160	250	65	4610		10		7
MW32-210130L/3	16.0	72.7	2100		1300	700	160	250	70	5760		12		9

MW42系列 Series MW42



外形尺寸图
Overall Dimension Drawing

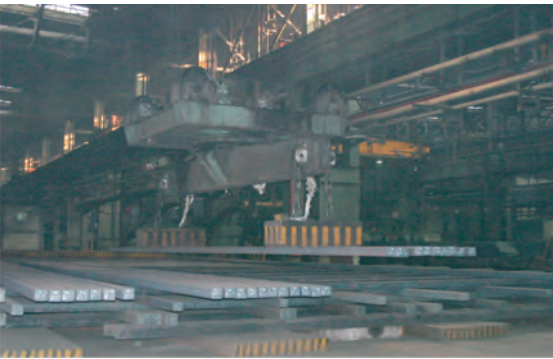
采用"┐┐┐"型磁路结构，能在狭小的吸附面积内产生强大的吸力，适用于吊运多根小方坯、轨梁，也可用于吊运圆坯、型钢等，是一种高吸力型起重电磁铁。

This super force series which adopts "┐┐┐" structure and can generate powerful attraction force in attached area is suitable for lifting and transporting billets girder beam and track beam, and also used for lifting and transporting round, profiled steel.

MW42常温型 Series MW42 Normal Temperature Type

主要技术参数（额定电压DC-220V，通电持续率TD-60%）
Main technical data (rated voltage DC-220V, duty cycle TD-60%)

型 号 model	冷态 功率 cold- state power (kW)	冷态 电流 cold- state current (A)	外形尺寸 (mm) overall dimension							质量 mass (kg)	起重能力举例 (两台联用) lifting capacity of 2 units (An Example)			
											200方坯 billet		240方坯 billet	
			A	B	C	D	E	F	G		长度 length(m)	根数 piece(s)	长度 length(m)	根数 piece(s)
MW42-90115L/1	8.83	40.1	900	1150	1050	500	110	180	40	1880	11	4	9.5	3
MW42-110115L/1	10.5	47.5	1100		1050	500	125	200	45	2180		5		4
MW42-140115L/1	13.1	59.5	1400		1100	600	125	200	50	2760		6		5
MW42-110130L/1	10.3	46.7	1100	1300	1050	500	125	200	50	2700	13.5	5	12	4
MW42-140130L/1	13.0	59.0	1400		1100	600	140	250	55	3340		6		5
MW42-170130L/1	16.6	75.4	1700		1200	600	140	250	60	3920		7		6
MW42-140140L/1	13.9	63	1400	1400	1100	600	140	250	60	3980	16.5	6	14.5	5
MW42-170140L/1	16.5	74.5	1700		1200	600	160	250	65	4610		7		6
MW42-210140L/1	19.8	89.8	2100		1350	700	160	250	70	5710		9		8



方坯、梁坯、板坯吊运用电磁铁

Lifting Electromagnet
for Billet, Girder Billet and Slab

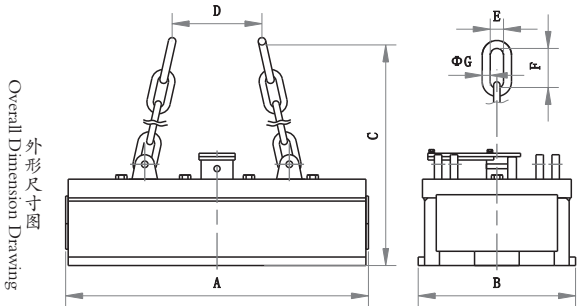
MW42高温型 Series MW42 High Temperature Type

主要技术参数（额定电压DC-220V，通电持续率TD-60%）

Main technical data (rated voltage DC-220V, cycle duty TD-60%)

型 号 model	冷态 功率 cold- state power (kW)	冷态 电流 cold- state current (A)	外形尺寸 (mm) overall dimension							质量 mass (kg)	起重能力举例（两台联用） lifting capacity of 2 units (An Example)			
											200方坯 billet		240方坯 billet	
			A	B	C	D	E	F	G		长度 length(m)	根数 piece(s)	长度 length(m)	根数 piece(s)
MW42-90110L/2	8.95	40.7	900	1100	1050	500	110	180	40	1920	11	4	9.5	3
MW42-110110L/2	11.2	50.9	1100		1050	500	125	200	45	2230		5		4
MW42-140110L/2	13.5	61.4	1400		1100	600	125	200	50	2820		6		5
MW42-110130L/2	11.1	50.5	1100	1300	1050	500	125	200	50	2760	13.5	5	12	4
MW42-140130L/2	13.4	60.9	1400		1100	600	140	250	55	3410		6		5
MW42-170130L/2	17.1	77.7	1700		1200	600	140	250	60	4000		7		6
MW42-140140L/2	13.8	62.7	1400	1400	1100	600	140	250	60	4060	16.5	6	14.5	5
MW42-170140L/2	17.0	77.2	1700		1200	600	160	250	65	4700		7		6
MW42-210140L/2	21.0	95.5	2100		1350	700	160	250	70	5810		9		8

MW92系列 Series MW92



电磁铁的磁极内装有可活动磁极块，在与被吸物接触后能自由伸缩，可得到最大的接触面积。由于活动磁极维护量大，容易出现卡死，因此一般不推荐此种系列。

The movable pole block, which has been mounted inside electromagnet, is retractable when contact with material in order to get the maximum contact area. However, owing to a big demand for maintenance and repair for this series, because stuck fault appears frequently, so we don't recommend this series to be used.

MW92常温型 Series MW92 High Temperature Type

主要技术参数（额定电压DC-220V，通电持续率TD-60%）

Main technical data (rated voltage DC-220V, cycle duty TD-60%)

型 号 model	冷态 功率 cold- state power (kW)	冷态 电流 cold- state current (A)	外形尺寸 (mm) overall dimension							质量 mass (kg)	起重能力举例（两台联用） lifting capacity of 2 units (An Example)			
											150方坯 billet		200方坯 billet	
			A	B	C	D	E	F	G		长度 length(m)	根数 piece(s)	长度 length(m)	根数 piece(s)
MW92-10060L/1	4.6	20.9	1000	600	1180	1200	125	200	38	970	6	5	4.5	4
MW92-14060L/1	7.1	32.3	1400	600	1200	1610	125	200	38	1240	6	8	4.5	6
MW92-16065L/1	8	36.4	1600	650	1100	1800	125	200	45	1740	7.5	10	5.5	7
MW92-19065L/1	10	45.5	1900	250	1246	2100	175	250	50	1990	7.5	12	5.5	9
MW92-21070L/1	10	45.5	2100	700	1300	2300	175	250	50	2800	9	13	6.5	10

MW42超高温型 Series MW42 Over-high Temperature Type

主要技术参数（额定电压DC-220V，通电持续率TD-60%）

Main technical data (rated voltage DC-220V, cycle duty TD-60%)

型 号 model	冷态 功率 cold- state power (kW)	冷态 电流 cold- state current (A)	外形尺寸 (mm) overall dimension							质量 mass (kg)	起重能力举例 (两台联用) lifting capacity of 2 units (An Example)			
			A	B	C	D	E	F	G		200方坯 billet		240方坯 billet	
											长度 length(m)	根数 piece(s)	长度 length(m)	根数 piece(s)
MW42-90110L/3	9.7	44.1	900	1100	1100	500	110	180	40	2010	9.5	4	8.0	3
MW42-110110L/3	11.9	54.1	1100		1100	500	125	200	45	2430		5		4
MW42-140110L/3	14.2	64.5	1400		1150	600	125	200	50	2950		6		5
MW42-110130L/3	11.8	53.6	1100	1300	1100	500	125	200	50	2890	11.5	5	10.0	4
MW42-140130L/3	14.0	63.6	1400		1150	600	140	250	55	3580		6		5
MW42-170130L/3	18.2	82.7	1700		1250	600	140	250	60	4190		7		6
MW42-140140L/3	15.1	68.6	1400	1400	1150	600	140	250	60	4260	14.0	6	12.0	5
MW42-170140L/3	18.0	81.8	1700		1250	600	160	250	65	4950		7		6
MW42-210140L/3	22.2	100.9	2100		1400	700	160	250	70	6120		9		8

注：超高温型电磁铁可提供水冷型，即吊运数次热坯后，电磁铁吸力会明显下降，此时将电磁铁吊入冷水池中冷却数十秒，再进行吊运，称之为高温潜水型电磁铁。采取独特的制造工艺，巧妙的散热结构，保证焊缝不开裂，线圈不进水。

Note: Over-high temperature type can be supplied with cooling equipment, that is: after several times of lifting hot billet, the attraction force would reduce obviously; then you should place the electromagnet into cold water pool for some seconds, after that put it into operation again. We call it as high temperature diving electromagnet. Owing to some special process technics and smart heat dispersion structure, welding will never get split and the coil will always be waterproof.

MW92高温型 Series MW92 High Temperature Type

主要技术参数（额定电压DC-220V，通电持续率TD-60%）

Main technical data (rated voltage DC-220V, cycle duty TD-60%)

型 号 model	冷态 功率 cold- state power (kW)	冷态 电流 cold- state current (A)	外形尺寸 (mm) overall dimension							质量 mass (kg)	起重能力举例（两台联用） lifting capacity of 2 units (An Example)			
											150方坯 billet		200方坯 billet	
			A	B	C	D	E	F	G		长度 length(m)	根数 piece(s)	长度 length(m)	根数 piece(s)
MW92-10060L/2	3.3	15	1000	600	1180	1200	125	200	38	970	6	5	4.5	4
MW92-14060L/2	5.5	25	1400	650	1025	1610	125	200	38	1300	6	8	4.5	6
MW92-16065L/2	5.65	25.7	1800	900	741	1860	175	250	50	1800	7.5	10	5.5	7
MW92-19065L/2	8	36.4	1900	650	1300	2100	175	250	50	2100	7.5	12	5.5	9
MW92-21070L/2	8	36.4	2100	700	1400	2300	175	250	50	3000	9	13	6.5	10

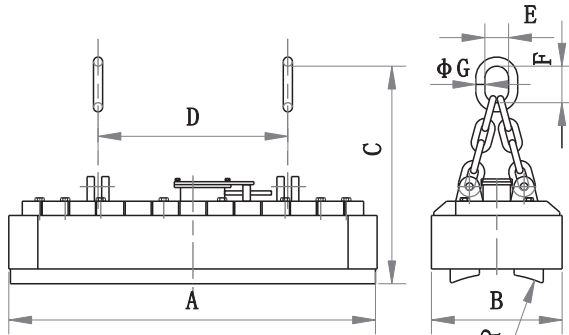
高速线材（盘圆）专用型起重电磁铁

Lifting Electromagnet
for High Speed Wier (Coiled Bar)

MW19系列 Series MW19

本系列专用于吊运盘圆，由于其自重轻、合理的结构（与盘圆只两点接触），已替代原MW22-□54系列，吊盘圆原则上不推荐用户使用MW22-□54系列，但本样本仍列出其相关技术参数表，供用户参考。其磁极结构能适应不同直径的盘圆，电磁铁的选择取决于盘圆的长度，既可沿电磁铁长度方向吊运多捆盘圆，亦可沿宽度方向吊运多捆，可提供多台并用方式，并能单独通、断，方便装车作业。

This series, owing to light self-weight, reasonable structure (just contact with two points of the bar) is suitable for coiled bar, and has replaced former series MW22-□54, which are not recommend by us now. However we still list main data for these two series for your reference. Its magnetic pole is suitable for coiled bar which is of different diameter. The length of coiled bar is important in choosing the right electromagnet. It can be put into operation along length or width direction of electromagnet and multiple units can be used together or separately as well.



外形尺寸图 Overall Dimension Drawing

MW19常温型 Series MW19 Normal Temperature Type

主要技术参数（额定电压DC-220V，通电持续率TD-60%）
Main technical data (rated voltage DC-220V, duty cycle TD-60%)

型 号 model	冷态功率 cold-state power (kW)	冷态电流 cold-state current (A)	外形尺寸 overall dimension (mm)							质量 mass (kg)	起吊能力 lifting capacity
			A	B	C	D	E	F	G		
MW19-14072L/1	8.6	39.1	1400	720	1180	1100	130	200	30	1760	盘圆外径 outer diameter of coiled bar: Φ1250-Φ1350mm
MW19-21072L/1	12.5	56.8	2100			1600			30	2670	
MW19-27072L/1	15.6	70.9	2700			2000			40	3250	
MW19-30072L/1	17.5	79.5	3000			2000			40	3640	
MW19-34072L/1	20.3	92.3	3400			2500			40	4100	盘圆重量 weight of coiled bar: 900-1200kg/m
MW19-42072L/1	24.7	112.3	4200			3000			50	5200	
MW19-54072L/1	31.2	141.8	5400			3500			50	6430	吊运盘圆时长度与电 磁铁长度配套 The length of coiled bar to be lifted shall be matched with that of electromagnet
MW19-56072L/1	33	150	5600			4000			50	6720	
MW19-60072L/1	35	159.1	6000			4000			50	7200	
MW19-63072L/1	36.8	167.3	6300			4000			50	7800	
MW19-70072L/1	41.2	187.3	7000			4000			50	8400	

MW19高温型 Series MW19 High Temperature Type

主要技术参数（额定电压DC-220V，通电持续率TD-60%）
Main technical data (rated voltage DC-220V, duty cycle TD-60%)

型 号 model	冷态功率 cold-state power (kW)	冷态电流 cold-state current (A)	外形尺寸 overall dimension (mm)							质量 mass (kg)	起吊能力 lifting capacity
			A	B	C	D	E	F	G		
MW19-14072L/2	7.8	35.5	1400	720	1230	1000	130	200	30	1830	盘圆外径 outer diameter of coiled bar: Φ1250-Φ1350mm
MW19-21072L/2	11.8	53.6	2100			1600			30	2760	
MW19-27072L/2	14.9	67.7	2700			2000			40	3410	
MW19-30072L/2	16.5	79.5	3000			2000			40	3790	
MW19-34072L/2	19.1	75	3400			2500			40	4290	盘圆重量 weight of coiled bar: 900-1200kg/m
MW19-42072L/2	23.6	107.3	4200			3000			50	5350	
MW19-54072L/2	29.7	135	5400			3500			50	6750	吊运盘圆时长度与电 磁铁长度配套 The length of coiled bar to be lifted shall be matched with that of electromagnet
MW19-56072L/2	30.9	140.5	5600			4000			50	7030	
MW19-60072L/2	33	150	6000			4000			50	7520	
MW19-63072L/2	35.6	161.8	6300			4000			50	8020	
MW19-70072L/2	39.3	178.6	7000			4000			50	8650	

MW22-□54系列 Series MW22-□54

主要技术参数 Main technical data

型 号 model	冷态功率 cold-state power (kW)	冷态电流 cold-state current (A)	外形尺寸 overall dimension (mm)							质量 mass (kg)	起吊能力 lifting capacity
			A	B	C	D	E	F	G		
MW22-10054L/1	6.6	30	1000	540	1250	500	130	200	30	1520	盘圆外径outer diameter of coiled bar: Φ1250-Φ1350mm
MW22-16054L/1	10	45.5	1600		1210	600			30	2350	
MW22-20054L/1	12.8	58.2	2000		1200	700			30	2480	
MW22-26054L/1	15	68.2	2600		1220	800			40	3210	
MW22-30054L/1	17.6	80	3000		1230	1000			40	3800	盘圆重量weight of coiled bar: 900-1200kg/m
MW22-34054L/1	19	86.4	3400		1230	1200			40	4250	
MW22-36054L/1	19.7	89.5	3600		1250	1300			40	4450	吊运盘圆时长度与电 磁铁长度配套 The length of coiled bar to be lifted shall be matched with that of electromagnet
MW22-40054L/1	21.9	99.5	4000		1250	1550			50	5000	
MW22-46054L/1	26.4	120	4600		1250	1800			50	5650	

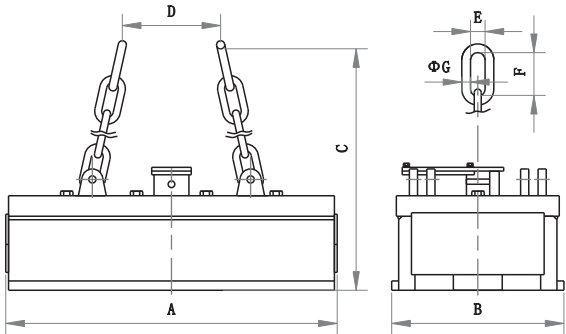
捆扎螺纹钢、型钢专用起重电磁铁

Lifting Electromagnet
for Bundled Rebar and Profiled Steel

MW18系列 Series MW18

MW18系列电磁铁运用独特的“┐”型磁路，双线包结构，具有散热好、透磁深，能穿透多层气隙的特点，可吊运没作捆扎或只作了简单捆扎的棒材、扁铁、角钢等。有常温型和高温型。由于多采用两台或多台联吊，故其与挂梁联接多采用两吊点或四吊点结构，本样本中所列均为两吊点结构，订货时请注明与挂梁联接的具体要求。由于圆钢、螺纹钢等这类型材的挠度较大，建议被吸物长度超过9米的采用多台联吊。

This series which adopts "┐" type of magnetic circuit and double wrapping has good advantages in heat dispersion, penetration,(for example it can penetrate air gap through multiple layers) and can lift and transport bar material, flat iron and angle iron in unpacked or simple packed situation. There are two kinds: normal & high temperature type. Normally multiple units are used in operation, so two or four connection points are used for linking hanging beam. We made an example of two connection-points linking way in this catalog. Please let us know your specific requirement before you place any order. Since the profiled steel like round iron and thread iron is of big deflection, when its length over 9 meters, we suggested you to use multiple units.



外形尺寸图
Overall Dimension Drawing

MW18常温型 Series MW18 Normal Temperature Type

主要技术参数（额定电压DC-220V，通电持续率TD-60%）
Main technical data (rated voltage DC-220V, duty cycle TD-60%)

型 号 model	冷态 功率 cold-state power (kW)	冷态 电流 cold-state current (A)	外形尺寸 overall dimension (mm)							质量 mass (kg)	吊运捆扎棒材能力 capacity of lifting bundled bar		
			A	B	C	D	E	F	G		被吸物规格 specification of attached material	台数 units	捆数 bundles
MW18-8070L/1	5.65	25.6	800	700	1000	500	110	180	30	920	捆扎长度12m 捆径≤Φ250mm 捆重≤2t bundles length=12m; diameter≤Φ250mm; weight ≤2t	4	3
MW18-11070L/1	8	36.5	1100		1000	500			30	1270			4
MW18-14070L/1	10	45.6	1400		1100	600			35	1680			5
MW18-17070L/1	12.3	56	1700		1100	700			40	2100			6
MW18-11080L/1	8.35	38	1100	800	1100	500			35	1560	捆扎长度12m 捆径≤Φ300mm 捆重≤3t bundles length=12m; diameter≤Φ300mm; weight ≤3t		3
MW18-14080L/1	10.8	48.5	1400		1150	600			40	1990			4
MW18-17080L/1	13.1	59.5	1700		1150	700			45	2470			5

MW18高温型 Series MW18 High Temperature Type

主要技术参数（额定电压DC-220V，通电持续率TD-60%）
Main technical data (rated voltage DC-220V, duty cycle TD-60%)

型 号 model	冷态 功率 cold-state power (kW)	冷态 电流 cold-state current (A)	外形尺寸 overall dimension (mm)							质量 mass (kg)	吊运捆扎棒材能力 capacity of lifting bundled bar			
			A	B	C	D	E	F	G		被吸物规格 specification of attached material	台数 units	捆数 bundles	
MW18-8070L/2	5.0	22.7	800	700	1050	500	110	180	30	990	捆扎长度12m 捆径≤Φ250mm 捆重≤2t bundles length=12m; diameter≤Φ250mm; weight ≤2t	4	3	
MW18-11070L/2	7.1	32.5	1100		1050	500			30	1380			4	
MW18-14070L/2	8.8	40	1400		1150	600			35	1800			5	
MW18-17070L/2	10.8	49	1700		1150	700			40	2250			6	
MW18-11080L/2	7.4	33.5	1100	800	1150	500			35	1670	捆扎长度12m 捆径≤Φ300mm 捆重≤3t bundles length=12m; diameter≤Φ300mm; weight ≤3t		3	
MW18-14080L/2	9.0	41	1400		1200	600			40	2140			4	
MW18-17080L/2	11.6	52.5	1700		1200	700			45	2650			5	



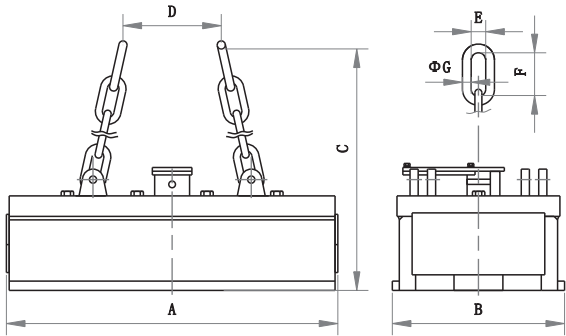
捆扎螺纹钢、型钢专用起重电磁铁

Lifting Electromagnet
for Bundled Rebar and Profiled Steel

MW38系列 Series MW38

MW38系列电磁铁运用独特的磁路结构，具有散热好、透磁深，能穿透多层气隙的特点，可吊运没作捆轧或只作了简单捆轧的棒材、扁铁、角钢等。可改善小圆钢、螺纹钢等这类型材吊运时挠度较大的问题。有常温型和高温型。由于多采用两台或多台联吊，故其与挂梁联接多采用两吊点或四吊点结构，本样本中所列均为两吊点结构，订货时请注明与挂梁联接的具体要求。

This series which adopts unique magnetic circuit has good advantages in heat dispersion, penetration, (for example it can penetrate air gap through multiple layers) and can lift and transport bar material, flat iron and angle iron in unpacked or simple packed situation. It improves problem like big deflection when lift round steel and thread steel. There are two kinds: normal & high temperature type. Normally multiple units are used in operation, so two or four connection points are used for linking hanging beam. We made an example of two connection-points linking way in this catalog. Please let us know your specific requirement before you place any order.



外形尺寸图
Overall Dimension Drawing

MW38常温型 Series MW38 Normal Temperature Type

主要技术参数（额定电压DC-220V，通电持续率TD-60%）
Main technical data (rated voltage DC-220V, duty cycle TD-60%)

型 号 model	冷态功率 cold-state power (kW)	冷态电流 cold-state current (A)	外形尺寸 overall dimension (mm)							质量 mass (kg)	吊运捆扎棒材能力 capacity of lifting bundled bar		
			A	B	C	D	E	F	G		被吸物规格 specification of attached material	台数 units	捆数 bundles
MW38-10095L/1	7.9	35.9	1000	950	1050	500	110	180	30	1510	捆扎长度12m 捆径≤Φ400mm 捆重≤3.5t bundle length = 12m; diameter≤Φ400mm; weight ≤3.5t	4	2
MW38-14095L/1	10.9	49.5	1400		1100	600	110	180	35	2090			3
MW38-17095L/1	13.2	60	1700		1150	700	110	180	40	2530			4
MW38-110100L/1	8.9	40.5	1100	1000	1100	500	110	180	35	1920	bundle length = 12m; diameter≤Φ400mm; weight ≤3.5t	3	2
MW38-140100L/1	10.5	47.7	1400		1150	600	110	180	40	2390			3
MW38-170100L/1	13.4	60.9	1700		1150	700	125	200	45	2910			4
MW38-110110L/1	9.1	41.4	1100	1100	1150	600	110	180	40	2350	捆扎长度9m 捆径≤Φ400mm 捆重≤4t bundles length = 9m; diameter≤Φ400mm; weight ≤4t	2	2
MW38-140110L/1	11.1	50.5	1400		1200	600	125	200	45	3020			3
MW38-170110L/1	13.5	61.4	1700		1250	700	125	200	50	3630			4



MW38高温型 Series MW38 High Temperature Type

主要技术参数（额定电压DC-220V，通电持续率TD-60%）
Main technical data (rated voltage DC-220V, duty cycle TD-60%)

型 号 model	冷态功率 cold-state power (kW)	冷态电流 cold-state current (A)	外形尺寸 overall dimension (mm)							质量 mass (kg)	吊运捆扎棒材能力 capacity of lifting bundled bar		
			A	B	C	D	E	F	G		被吸物规格 specification of attached material	台数 units	捆数 bundles
MW38-10095L/2	7.1	32.3	1000	950	1100	500	110	180	30	1630	捆扎长度12m 捆径≤Φ400mm 捆重≤3.5t bundles length=12m; diameter≤Φ400mm; weight ≤3.5t	4	2
MW38-14095L/2	9.8	44.5	1400		1150	600	110	180	35	2240			3
MW38-17095L/2	11.7	53.2	1700		1200	700	110	180	40	2710			4
MW38-110100L/2	8.0	45.5	1100	1000	1150	500	110	180	35	2060	bundle length = 12m; diameter≤Φ400mm; weight ≤3.5t	3	2
MW38-140100L/2	9.5	43.2	1400		1200	600	110	180	40	2580			3
MW38-170100L/2	12.0	54.5	1700		1200	700	125	200	45	3150			4
MW38-110110L/2	8.2	37.3	1100	1100	1200	600	110	180	40	2530	捆扎长度9m 捆径≤Φ400mm 捆重≤4t bundles length=9m; diameter≤Φ400mm; weight ≤4t	2	2
MW38-140110L/2	10.1	45.9	1400		1250	600	125	200	45	3260			3
MW38-170110L/2	12.2	55.5	1700		1300	700	125	200	50	3910			4

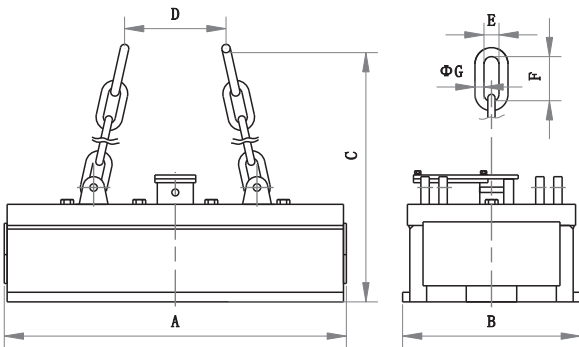
吊运管坯、钢管用起重电磁铁

Lifting Electromagnet for Round
and Steel Pipe

MW25系列 Series MW25

本系列为应用广泛的长方形电磁铁，主要适用于吊运圆坯、钢管等，也可用于吊运方坯、钢锭和大型初轧坯、型钢等。

The widely used electromagnet which has rectangular shape is suitable for lifting and transporting round and steel pipe, etc., and billet, steel ingot, bloom, profiled steel as well.



外形尺寸图
Overall Dimension Drawing

MW25常温型 Series MW25 Normal Temperature Type

主要技术参数（额定电压DC-220V，通电持续率TD-60%）
Main technical data (rated voltage DC-220V, duty cycle TD-60%)

型 号 model	冷态功率 cold-state power (kW)	冷态电流 cold-state current (A)	外形尺寸 overall dimension (mm)							质量 mass (kg)	两台联用起吊能力 lifting capacity of two units			
											圆坯 round Φ 180		钢管 steel pipe Φ 340 × δ 20	
			A	B	C	D	E	F	G		长度 length(m)	根数 piece(s)	长度 length(m)	根数 piece(s)
MW25-12080L/1	6.2	28.2	1100	800	1050	500	110	180	40	1520	9	6	13	3
MW25-14080L/1	7.7	35	1400		1100	600	125	200	45	1850		7		4
MW25-17080L/1	8.9	40.4	1700		1200	600	125	200	50	2330		9		5
MW25-26080L/1	14.4	65.4	2600		1300	700	140	250	60	3480		13		7
MW25-14085L/1	7.65	34.8	1400	850	1100	600	125	200	50	2210	10.5	7	14.5	4
MW25-17085L/1	9.95	45.2	1700		1200	600	140	250	55	2670		9		5
MW25-21085L/1	11.5	52.3	2100		1300	700	140	250	60	3290		10		6
MW25-14095L/1	8.2	37.2	1400	950	1150	600	140	250	55	2610	12	7	16	4
MW25-17095L/1	9.8	44.5	1700		1250	600	140	250	60	3130		9		5
MW25-21095L/1	11.4	51.7	2100		1350	700	160	250	65	3810		10		6
MW25-140100L/1	8.1	36.5	1400	1000	1200	600	140	250	60	3080	14	7	17	4
MW25-170100L/1	9.7	44.1	1700		1300	600	160	250	65	3710		9		5

MW25 高温型 Series MW25 High Temperature Type

主要技术参数（额定电压DC-220V，通电持续率TD-60%）
Main technical data (rated voltage DC-220V, duty cycle TD-60%)

型 号 model	冷态功率 cold-state power (kW)	冷态电流 cold-state current (A)	外形尺寸 overall dimension (mm)							质量 mass (kg)	两台联用起吊能力 lifting capacity of two units			
											圆坯 round Φ 180		钢管 steel pipe Φ 340 × δ 20	
			A	B	C	D	E	F	G		长度 length(m)	根数 piece(s)	长度 length(m)	根数 piece(s)
MW25-12080L/2	6.5	29.5	1100	800	1050	500	110	180	40	1560	9	6	13	3
MW25-14080L/2	8.1	36.8	1400		1100	600	125	200	45	1890		7		4
MW25-17080L/2	9.2	41.8	1700		1200	600	125	200	50	2380		9		5
MW25-26080L/2	15.1	68.6	2600		1300	700	140	250	60	3550		13		7
MW25-14085L/2	8.15	37.0	1400	850	1100	600	125	200	50	2260	10.5	7	14.5	4
MW25-17085L/2	10.5	47.7	1700		1200	600	140	250	55	2730		9		5
MW25-21085L/2	12.1	55	2100		1300	700	140	250	60	3360		10		6
MW25-14095L/2	8.6	39.1	1400	950	1150	600	140	250	55	2670	12	7	16	4
MW25-17095L/2	10.4	47.3	1700		1250	600	140	250	60	3190		9		5
MW25-21095L/2	12.0	54.5	2100		1350	700	160	250	65	3890		10		6
MW25-140100L/2	8.5	38.6	1400	1000	1200	600	140	250	60	3150	14	7	17	4
MW25-170100L/2	10.3	46.8	1700		1300	600	160	250	65	3800		9		5



吊运管坯、钢管用起重电磁铁
Lifting Electromagnet for Round
and Steel Pipe

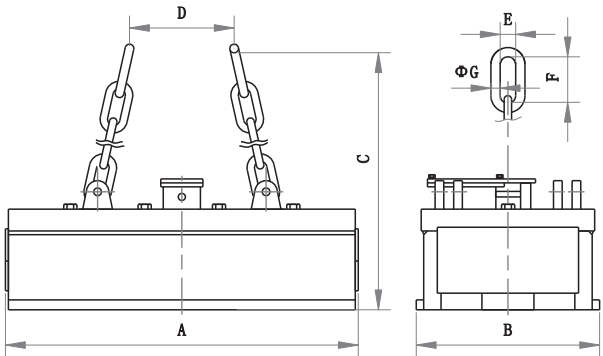


MW25超高温型 Series MW25 Over-high Temperature Type

主要技术参数（额定电压DC-220V，通电持续率TD-60%）
Main technical data (rated voltage DC-220V, duty cycle TD-60%)

型 号 model	冷态 功率 cold- state power (kW)	冷态 电流 cold- state current (A)	外形尺寸 overall dimension (mm)							质量 mass (kg)	两台联用起吊能力 lifting capacity of two units			
											圆坯 round Φ 180		钢管 steel pipe Φ 340 × δ 20	
			A	B	C	D	E	F	G		长度 length(m)	根数 piece(s)	长度 length(m)	根数 piece(s)
MW25-12080L/3	6.9	31.4	1100	800	1100	500	110	180	40	1630	7.5	6	11	3
MW25-14080L/3	8.5	38.6	1400		1150	600	125	200	45	1980		7		4
MW25-17080L/3	9.8	44.5	1700		1250	600	125	200	50	2480		9		5
MW25-26080L/3	15.8	71.8	2600		1350	700	140	250	60	3730		13		7
MW25-14085L/3	8.6	39.1	1400	850	1150	600	125	200	50	2360	9.0	7	12	4
MW25-17085L/3	11.0	50	1700		1250	600	140	250	55	2860		9		5
MW25-21085L/3	12.4	56.4	2100		1350	700	140	250	60	3520		10		6
MW25-14095L/3	9.1	41.4	1400	950	1200	600	140	250	55	2800	10	7	13.5	4
MW25-17095L/3	10.9	49.5	1700		1300	600	140	250	60	3350		9		5
MW25-21095L/3	12.5	56.8	2100		1400	700	160	250	65	4090		10		6
MW25-140100L/3	9.0	40.9	1400	1000	1250	600	140	250	60	3300	12	7	14.5	4
MW25-170100L/3	10.8	49.1	1700		1350	600	160	250	65	3980		9		5

MW35系列 Series MW35



外形尺寸图
Overall Dimension Drawing

主要适用于吊运圆坯、钢管等，也可用于吊运方坯、钢锭和大型初轧坯、型钢等。特殊磁路设计，具有透磁深的特点。

This series whose magnetic circuit is designed specially and has deep penetration is mainly used for lifting and transporting round, steel pipe etc., and billet, steel ingot, bloom, profiled steel as well.

MW35常温型 Series MW35 Normal Temperature Type

主要技术参数（额定电压DC-220V，通电持续率TD-60%）
Main technical data (rated voltage DC-220V, duty cycle TD-60%)

型 号 model	冷态 功率 cold- state power (kW)	冷态 电流 cold- state current (A)	外形尺寸 overall dimension (mm)							质量 mass (kg)	两台联用起吊能力 lifting capacity of two units			
											圆坯 round Φ 350		钢管 steel pipe Φ 426 × δ 20	
			A	B	C	D	E	F	G		长度 length(m)	根数 piece(s)	长度 length(m)	根数 piece(s)
MW35-90135L/1	8.5	38.6	900	1300	1050	500	125	200	45	2200	9.0	2	16	2
MW35-140135L/1	12.7	57.5	1400		1100	600	140	250	55	3590		4		3
MW35-170135L/1	15.1	68.6	1700		1200	600	140	250	60	4230		5		4
MW35-120145L/1	11.2	51	1200	1450	1100	600	140	250	55	3690	11.0	3	19	2
MW35-170145L/1	15.0	68.2	1700		1200	600	160	250	65	5050		5		4
MW35-210145L/1	18.4	83.5	2100		1300	700	160	250	70	6230		6		5
MW35-140160L/1	13.6	61.7	1400	1600	1200	600	160	250	65	5030	12.5	4	20	3
MW35-170160L/1	15.7	71.3	1700		1300	700	160	250	70	6080		5		4
MW35-145180L/1	14.1	63.8	1450		1200	600	160	250	70	5960	14.5	4	21	3
MW35-170180L/1	15.9	72.3	1700		1400	700	160	250	75	7210		5		4

吊运管坯、钢管用起重电磁铁
Lifting Electromagnet for Round
and Steel Pipe

MW35高温型 Series MW35 High Temperature Type

主要技术参数（额定电压DC-220V，通电持续率TD-60%）
Main technical data (rated voltage DC-220V, duty cycle TD-60%)

型 号 model	冷态 功率 cold- state power (kW)	冷态 电流 cold- state current (A)	外形尺寸 overall dimension (mm)							质量 mass (kg)	两台联用起吊能力 lifting capacity of two units			
											圆坯 round Φ 350		钢管 steel pipe Φ 420 × δ 20	
			A	B	C	D	E	F	G		长度 length(m)	根数 piece(s)	长度 length(m)	根数 piece(s)
MW35-90135L/2	8.9	40.5	900	1300	1050	500	125	200	45	2250	9.0	2	16	2
MW35-140135L/2	12.8	58.2	1400		1100	600	140	250	55	3670		4		3
MW35-170135L/2	15.8	71.8	1700		1200	600	140	250	60	4320		5		4
MW35-120145L/2	11.7	53.2	1200	1450	1100	600	140	250	55	3770	11.0	3	19	2
MW35-170145L/2	15.7	71.4	1700		1200	600	160	250	65	5160		5		4
MW35-210145L/2	18.9	85.9	2100		1300	700	160	250	70	6360		6		5
MW35-140160L/2	14.0	63.6	1400	1600	1200	600	160	250	65	5140	12.5	4	20	3
MW35-170160L/2	15.8	71.8	1700		1300	700	160	250	70	6220		5		4
MW35-145180L/2	14.7	66.8	1450	1800	1200	600	160	250	70	6030	14.5	4	21	3
MW35-170180L/2	15.7	71.4	1700		1400	700	160	250	75	7370		5		4

MW35超高温型 Series MW35 Over-high Temperature Type

主要技术参数（额定电压DC-220V，通电持续率TD-60%）
Main technical data (rated voltage DC-220V, duty cycle TD-60%)

型 号 model	冷态 功率 cold- state power (kW)	冷态 电流 cold- state current (A)	外形尺寸 overall dimension (mm)							质量 mass (kg)	两台联用起吊能力 lifting capacity of two units			
											圆坯 round billet Φ 350		钢管 steel pipe Φ 426 × δ 20	
			A	B	C	D	E	F	G		长度 length(m)	根数 piece(s)	长度 length(m)	根数 piece(s)
MW35-90135L/3	9.4	42.7	900	1300	1100	500	125	200	45	2360	8.0	2	10.0	2
MW35-140135L/3	14.1	64.1	1400		1150	600	140	250	55	3800		4		3
MW35-170135L/3	17.0	77.3	1700		125	600	140	250	60	4480		5		4
MW35-120145L/3	13.9	63.2	1200	1450	1150	600	140	250	55	3760	9.5	3	12.5	2
MW35-170145L/3	17.0	77.3	1700		1250	600	160	250	65	5360		5		4
MW35-210145L/3	21.0	95.5	2100		1350	700	160	250	70	6650		6		5
MW35-140160L/3	15.0	68.2	1400	1600	1250	600	160	250	65	5350	11.0	4	13	3
MW35-170160L/3	17.5	79.5	1700		1350	700	160	250	70	6490		5		4
MW35-145180L/3	15.6	70.9	1450	1800	1250	600	160	250	70	6350	13.0	4	13.5	3
MW35-170180L/3	17.6	80	1700		1450	700	160	250	75	7780		5		4

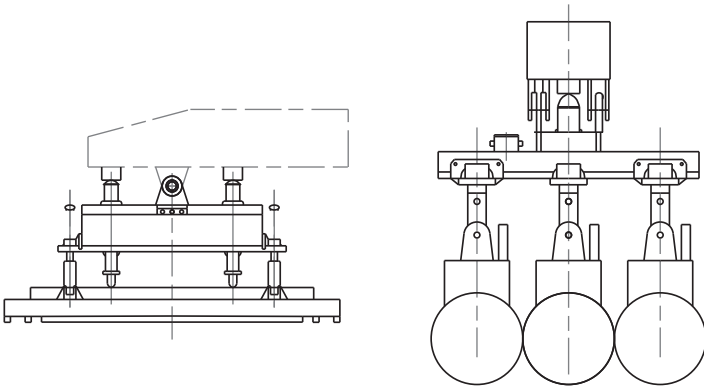
MW85系列 Series MW85

本系列采用独特的磁路结构，磁极为圆弧形，以满足吊运钢管的要求。与挂钩、钢丝绳等吊运方式比较，电磁铁可以从正上方接触钢管，直接进行装卸作业，并可以有效的提高货场的利用率。作业时不会影响邻近的钢管，可以确保作业安全，并可节能，省力。

This series designed with unique magnetic circuit has round arc pole for lifting and transporting steel tubes. Compared to other lifting tools like hook or steel wire, it can touch the tube right from the top and be able to load and unload the materials directly, thus it improves working efficiency greatly. At the same time, that it will not touch nerighbouring tube provides a safety operation and engery-saving.

注：如图三组联用：
1. 可吊3根口径小于32英寸钢管；
2. 用旁边两组可起吊2根口径大于32英寸钢管；
3. 用中央一组可起吊1根大口径钢管。

Note: See the above fig. There are three units combination
1. Three pieces of steel tube with diameter less than 32 inches can be lifted at a time;
2. Two pieces of steel tube with diameter more than 32 inches can be lifted through 2 magnets in a row at a time;
3. One piece of steel tube with big diameter can be lifted through the center magnet.



外形尺寸图
Overall Dimension Drawing

主要技术参数（额定电压DC-220V，通电持续率TD-50%）
Main technical data (rated voltage DC-220V, duty cycle TD-50%)

型 号 model	自重 Self- weight (kg)	直流电压 DC voltage (V)	冷态功率 cold-state power (kW)	两台联用起吊能力举例 lifting capacity of two units				
				外径outer diameter (mm)	壁厚 thickness of wall (mm)	长度 length (mm)	起吊能力 lifting capacity (kg)	气隙 air gap (mm)
MW85-14035L/1	1900	220	7.5	Φ1420~Φ406	19~6.4	18000~6000	≤10000	≤2

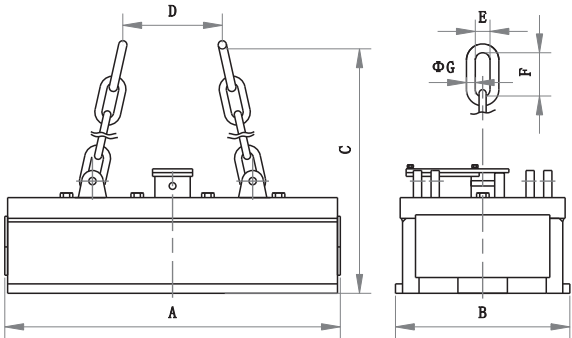
吊运重轨、型钢用起重电磁铁

Lifting Electromagnet for Heavy
Rail and Profiled Steel

MW17系列 Series MW17

本系列专用于吊运重轨。由于铁路运输建设的飞速发展，重轨超长、超重化，针对此类物料，我公司跟踪各大重轨项目，为用户提供了理想的电磁吊具，已在重轨专业生产厂家和大型铁道轨梁厂使用。

MW17系列电磁铁运用独特的"┐"型磁路，双线圈结构，具有散热好、透磁深。可吊运重轨、型钢、异形坯等。有常温型和高温型。多采用两台或多台联吊，



外形尺寸图
Overall Dimension Drawing

This series is specially used for lifting and transporting heavy rail. As the heavy rail has become super-long and super-heavy today with the rapid development of railway construction, we took note at some important heavy rail projects in order to provide ideal product for users. The products have been used at professional heavy rail manufacturing factories and large railway track beam factories. This series which adopts "┐" type of magnetic circuit and double wrapping structure has good property of heat dispersion and deep penetration and can be used to lift and transport heavy rail, profiled steel, beam blank. There are two kinds: normal & high temperature type. Normaly it adopts multiple units.

MW17常温型 Series MW17 Normal Temperature Type

主要技术参数（额定电压DC-220V，通电持续率TD-60%）

Main technical data (rated voltage DC-220V, duty cycle TD-60%)

型 号 model	冷态功率 cold-state power (kW)	冷态电流 cold-state current (A)	外形尺寸 overall dimension (mm)							质量 mass (kg)	起重能力举例（两台联用） lifting capacity of 2 units(An Example)	
											长：12.5米；重：60Kg length: 12.5m; weight: 60kg	
			A	B	C	D	E	F	G		根数 piece(s)	吸吊方式 lifting mode
MW17-12075L/1	6.0	27.3	1200	750	950	600	110	180	35	1420	7	只吸轨头 just absorb rail head
MW17-17075L/1	8.7	39.5	1700	750	950	600	110	180	40	2180	10	
MW17-12085L/1	6.3	28.6	1200	850	1000	600	125	200	45	1850	10	正反扣吸吊 Put two pcs (one face up, the other face down)together and life them
MW17-17085L/1	9.0	10.9	1700	850	1000	600	125	200	50	2970	14	

MW17高温型 Series MW17 High Temperature Type

主要技术参数（额定电压DC-220V，通电持续率TD-60%）

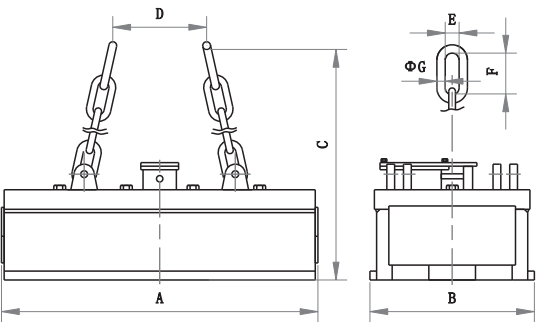
Main technical data (rated voltage DC-220V, duty cycle TD-60%)

型 号 model	冷态功率 cold-state power (kW)	冷态电流 cold-state current (A)	外形尺寸 overall dimension (mm)							质量 mass (kg)	起重能力举例（两台联用） lifting capacity of 2 units(An Example)	
											长：12.5米；重：60Kg length: 12.5m; weight: 60kg	
			A	B	C	D	E	F	G		根数 piece(s)	吸吊方式 lifting mode
MW17-12075L/2	5.7	26	1200	750	900	600	110	180	35	1490	7	只吸轨头 just absorb rail head
MW17-17075L/2	8.6	39	1700	750	950	600	110	180	40	2290	10	
MW17-12085L/2	5.9	27	1200	850	1000	600	125	200	45	1950	10	正反扣吸吊 Put two pcs (one face up, the other face down)together and life them
MW17-17085L/2	8.8	42.3	1700	850	1000	600	125	200	50	3120	14	

MW27系列 Series MW27

本系列MW27系列电磁铁运用独特的“┐”型磁路。可吊运重轨、型钢、异形坯等。有常温型和高温型。多采用两台或多台联吊。

Electromagnet series MW27 which adopts unique "┐" type of magnetic circuit can lift and transport heavy rail, profiled steel and beam blank, etc. There are two kinds: normal and high temperature type. Normal multiple units are adopted.



外形尺寸图
Overall Dimension Drawing



吊运重轨、型钢用起重电磁铁
Lifting Electromagnet for Heavy
Rail and Profiled Steel

MW27常温型 Series MW27 Normal Temperature Type

主要技术参数（额定电压DC-220V，通电持续率TD-60%）
Main technical data (rated voltage DC-220V, duty cycle TD-60%)

型 号 model	冷态功率 cold-state power (kW)	冷态电流 cold-state current (A)	外形尺寸 overall dimension (mm)							质量 mass (kg)	起重能力举例（两台联用） lifting capacity of 2 units (An Example)	
											长：12.5米；重：60Kg length: 12.5m; weight: 60kg	
			A	B	C	D	E	F	G			
MW27-12065L/1	6.2	28.2	1200	650	1000	600	110	180	35	1650	7	只吸轨头 just absorb rail head
MW27-17065L/1	8.9	40.5	1700	650	1050	600	110	180	40	2520	10	
MW27-12075L/1	6.5	29.5	1200	750	1100	600	110	180	40	2000	10	正反扣吸吊 Put two pcs (one face up, the other face down)together and life them
MW27-17075L/1	9.1	41.4	1700	750	1150	600	125	200	45	3200	14	

MW27高温型 Series MW27 High temperature type

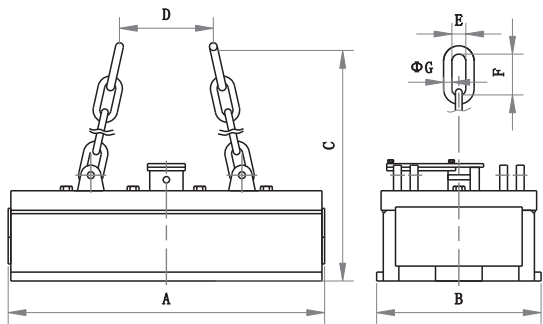
主要技术参数（额定电压DC-220V，通电持续率TD-60%）
Main technical data (rated voltage DC-220V, duty cycle TD-60%)

型 号 model	冷态功率 cold-state power (kW)	冷态电流 cold-state current (A)	外形尺寸 overall dimension (mm)							质量 mass (kg)	起重能力举例（两台联用） lifting capacity of 2 units (An Example)	
											长：12.5米；重：60Kg length: 12.5m; weight: 60kg	
			A	B	C	D	E	F	G		根数 piece(s)	吸吊方式 lifting mode
MW27-12065L/2	5.8	26.4	1200	650	1000	600	110	180	35	1680	7	只吸轨头 just absorb rail head
MW27-17065L/2	8.9	40.5	1700	650	1050	600	110	180	40	2580	10	
MW27-12075L/2	6.2	28.2	1200	750	1100	600	110	180	40	2100	10	正反扣吸吊 Put two pcs (one face up, the other face down)together and life them
MW27-17075L/2	8.7	39.5	1700	750	1150	600	125	200	450	3300	14	

MW37系列 Series MW37

MW37系列电磁铁运用独特的型磁路。可吊运重轨、型钢、异形坯等，特别适用于吊运捆扎的型钢。有常温型和高温型。多采用两台或多台联吊，

Electromagnet series MW37 which adopts unique magnetic circuit, can lift and transport heavy rail, profiled steel and beam blank, etc, especially suitable for bundled profiled steel. There are two kinds: normal and high temperature type. Normally multiple units are adopted



外形尺寸图
Overall Dimension Drawing

MW37常温型 Series MW37 Normal Temperature Type

主要技术参数（额定电压DC-220V，通电持续率TD-60%）
Main technical data (rated voltage DC-220V, duty cycle TD-60%)

型 号 model	冷态功率 cold- state power (kW)	冷态电流 cold- state current (A)	外形尺寸 overall dimension (mm)							质量 mass (kg)	起重能力举例（两台联用） lifting capacity of 2 units(An Example)		
			A	B	C	D	E	F	G		规格 specification	台数 units	捆数 bundles
MW37-110100L/1	8.1	36.8	1100	1000	1050	600	110	180	40	2160	捆扎H型钢、 槽钢、捆扎工字钢 捆长12m，捆重5T， 捆宽450.捆高600 bundled H-shape steel, channel steel, bundled I - shape steel (length:12m; weight: 5T;width 450;height:600)	4	2
MW37-140100L/1	10.3	46.8	1400		1050	600	125	200	45	2810			3
MW37-170100L/1	12.5	56.8	1700		1100	700	125	200	50	3470			4
MW37-110110L/1	8.2	37.3	1100	1100	1050	600	110	180	40	2550		3	2
MW37-140110L/1	10.5	47.7	1400		1100	700	125	200	45	3330			3
MW37-170110L/1	12.4	56.4	1700		1100	700	125	200	50	4100			4

MW37高温型 Series MW37 High Temperature Type

主要技术参数（额定电压DC-220V，通电持续率TD-60%）
Main technical data (rated voltage DC-220V, duty cycle TD-60%)

型 号 model	冷态功率 cold- state power (kW)	冷态电流 cold- state current (A)	外形尺寸 overall dimension (mm)							质量 mass (kg)	起重能力举例（两台联用） lifting capacity of 2 units(An Example)		
			A	B	C	D	E	F	G		规格 specification	台数 units	捆数 bundles
MW37-110100L/2	8.3	37.7	1100	1000	1050	600	110	180	40	2230	捆扎H型钢、 槽钢、捆扎工字钢 捆长12m, 捆重5T, 捆宽450.捆高600 bundled H-shape steel, channel steel, bundled I - shape steel (length:12m; weight: 5T;width 450;height:600)	4	2
MW37-140100L/2	10.6	48.2	1400		1050	600	125	200	45	2910			3
MW37-170100L/2	13.0	59.1	1700		1100	700	125	200	50	3610			4
MW37-110110L/2	8.5	38.6	1100	1100	1050	600	110	180	40	2670		3	2
MW37-140110L/2	10.9	49.5	1400		1100	700	125	200	45	3460			3
MW37-170110L/2	13.1	59.5	1700		1100	700	125	200	50	4300			4

吊运钢板用起重电磁铁

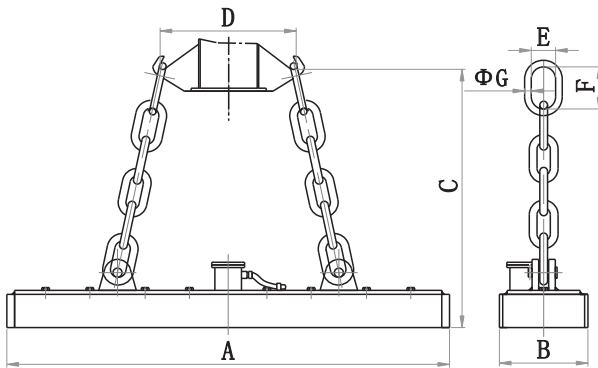
Lifting Electromagnet for
lifting and transporting steel plate



本系列产品是专为吊运中厚钢板而设计的。吊运作业安全准确迅速。考虑到长钢板吊运可能出现的弯曲变形而影响安全搬运，所以在吊运长尺寸钢板时，请使用多台电磁铁联用。对于中厚板（6mm~32mm）电磁铁的间距多取2.5~3.5m，两端外伸部分的长度可以取间距的二分之一。根据吊运张数的不同，又分为350型、400型、500型、650型四类。350型适合于中厚板厂，造船厂，机械制造厂，采用调磁控制方式，能起吊一张或一定张数钢板。400型适用于一次搬运尽量多的张数，可根据用户要求另行设计制造吊运700℃以下钢板用高温型产品。

This series is specially designed for lifting and transporting medium-thick steel plate. The whole operation is safe, exact and quick. When transport some long plates they easily go distortion.so we advice combination of multiple units to be used. For some plate which thickness is around the range of 6mm~32mm, space between 2 magnets should leave an extra 2.5~3.5 m, the length at each end is that of one half of space. According to different lifting pieces, the series is divided into type 350 and type 400 and type 500 and type 650.

Type 350 is suitable for medium-thick plate factory, ship building factory, machinery manufacturing factory. It is controlled by adjustable magnetic field, and can lift one or certain pieces of plates. Type 400 is suitable for lifting as many as possible pieces at a time; we can also produce the product less than 700℃ (high temperature type) for you.



外形尺寸图
Overall Dimension Drawing

MW84-□35系列 Series MW84-□35

主要技术参数（额定电压DC-220V，通电持续TD-60%）

Main technical data（rated voltage DC-220V，duty cycle TD-60%）

型 号 model	冷态功率 cold-state power (kW)	冷态电流 cold-state current (A)	外形尺寸 overall dimension (mm)							质量 mass (kg)
			A	B	C	D	E	F	G	
MW84-9030T/1	0.4	1.9	900	350	900	350	110	180	32	185
MW84-10535T(L)/1	0.9(1.4)	4.1(6.4)	1050		960	400			32	330
MW84-14035T(L)/1	1.2(1.87)	5.5(8.5)	1400		940	500			32	430
MW84-17535T(L)/1	1.5(2.35)	6.8(10.68)	1750		940	700			32	510
MW84-21035T(L)/1	1.8(2.8)	8.2(12.7)	2100		920	800			32	600
MW84-24535T(L)/1	2.5(3.3)	11.4(15)	2450		980	850			32	720
MW84-26035L/1	3.35	15.2	2600		1050	850			35	855
MW84-26035L/2	3.1	14.1	2600		1080	850			35	900

注：MW84-9030T/1额定电压为DC-110V。
Note: rated voltage of MW84-9030T/1 is DC-110V.



保证搬运张数举例

How many Pieces of Steel will be definitely Lifted(For Example)

钢板宽度 width of steel plate	型 号 model	吸吊张数 pieces of steel to be lifted	钢板厚度 Plate thickness (mm)						
			6	8	10	12	16	20	32
1500 (mm)	MW84-10535T(L)/1	4	3	3	3	3	2	2	1
	MW84-14035T(L)/1	4	4	3	3	2	2	2	1
	MW84-17535T(L)/1	4	4	3	3	2	2	2	1
	MW84-21035T(L)/1	4	4	3	3	2	2	2	1
	MW84-24535T(L)/1	4	4	3	3	2	2	2	1
2500(mm)	MW84-10535T(L)/1	1	1	1	1	2	1	1	1
	MW84-14035T(L)/1	3	2	2	2	2	1	1	1
	MW84-17535T(L)/1	4	3	3	3	2	2	2	1
	MW84-24040T(L)/1	4	3	3	3	2	2	2	1
	MW84-21035T(L)/1	4	3	3	3	2	2	2	1
4000(mm)	MW84—10535T(L)/1						1	1	1
	MW84-14035T(L)/1						1	1	1
	MW84-17535T(L)/1			1	1	1	1	1	1
	MW84-21035T(L)/1		1	2	2	1	1	1	1
	MW84-24535T(L)/1	2	2	2	2	2	2	2	1

注：MW84-9030T/1,四台联用可吊运长×宽×厚=3000~6000×900~1900×4~10mm钢板。
Note: MW84-9030T/L which adopts combination of four units can lift and transport plate of length 3000 ~ 6000,width 900 ~ 1900, thickness 4 ~ 10(mm)

吊运钢板用起重电磁铁

Lifting Electromagnet for
lifting and transporting steel plate

MW84-□40系列 Series MW84-□40

主要技术参数（额定电压DC-220V，通电持续率TD-60%）
Main technical data (rated voltage DC-220V, duty cycle TD-60%)

型 号 model	冷态功率 cold-state power (kW)	冷态电流 cold-state current (A)	外形尺寸 overall dimension (mm)							质量 mass (kg)
			A	B	C	D	E	F	G	
MW84-12040L/1	3.0	13.6	1200	400	1020	400	110	180	30	550
MW84-16040L/1	3.2	14.5	1600	400	1000	700			35	690
MW84-20040L/1	5.0	22.7	2000	400	970	800			35	840
MW84-24040L/1	6.0	27.3	2400	400	890	850			35	910
MW84-13042L/2	2.4	10.9	1260	420	1040	500			30	650
MW84-17042L/2	3.7	16.8	1680	420	1050	700			35	850
MW84-21042L/2	4.0	18.2	2100	420	1000	800			35	1050
MW84-25042L/2	4.8	21.8	2520	420	990	850			35	1250

保证搬运张数举例 How many Pieces of Steel will be definitely Lifted (For Example)

钢板宽度 width of steel plate	吸吊张数 pieces of steel to be lifted		钢板厚度 Plate thickness (mm)							
			型 号 model	6	8	10	12	16	20	32
1500 (mm)		MW84-12040L/1	MW84-13042L/2	6	5	4	4	3	3	1
		MW84-16040L/1	MW84-17042L/2	7	5	5	5	3	3	1
		MW84-20040L/1	MW84-21042L/2	7	5	5	5	3	3	1
		MW84-24040L/1	MW84-25042L/2	7	5	5	5	3	3	1
2500 (mm)		MW84-12040L/1	MW84-13042L/2	3	3	3	2	2	2	1
		MW84-16040L/1	MW84-17042L/2	6	4	4	4	3	2	1
		MW84-20040L/1	MW84-21042L/2	6	4	4	4	3	3	1
		MW84-24040L/1	MW84-25042L/2	7	5	5	4	3	3	1
4000 (mm)		MW84-12040L/1	MW84-13042L/2					1	1	1
		MW84-16040L/1	MW84-17042L/2			1	2	2	2	1
		MW84-20040L/1	MW84-21042L/2		2	3	3	2	2	1
		MW84-24040L/1	MW84-25042L/2	3	3	3	3	2	2	1

MW84-□50系列 Series MW84-□50

主要技术参数（额定电压DC-220V，通电持续率TD-60%）
Main technical data (rated voltage DC-220V, duty cycle TD-60%)

型 号 model	冷态功率 cold-state power (kW)	冷态电流 cold-state current (A)	外形尺寸 overall dimension (mm)							质量 mass (kg)
			A	B	C	D	E	F	G	
MW84-13050L/1	2.6	11.8	1300	500	1150	700	110	180	35	780
MW84-18050L/1	3.3	15	1800		1200	800			40	1180

MW84-26050L/1	5.1	23.2	2600	500	1250	850	110	180	45	1480
MW84-13050L/2	2.5	11.4	1300		1180	700			35	830
MW84-18050L/2	3.1	14.1	1800		1230	800			40	1170
MW84-26050L/2	4.9	22.3	2000		1280	850			45	1590

保证搬运张数举例 How many Pieces of Steel will be definitely Lifted (For Example)

钢板宽度 width of steel plate	吸吊张数 pieces of steel to be lifted 型 号 model	钢板厚度 Plate thickness (mm)						
		6	8	10	12	16	20	32
1500 (mm)	MW84-13050L/1	7	6	5	4	3	3	1
	MW84-18050L/1	8	7	6	5	4	3	2
	MW84-26050L/1	8	7	6	5	4	3	2
2500 (mm)	MW84-13050L/1	4	4	3	3	3	2	1
	MW84-18050L/1	7	5	5	4	4	3	2
	MW84-26050L/1	8	7	6	5	4	3	2
4000 (mm)	MW84-13050L/1				1	1	1	1
	MW84-18050L/1		3	3	2	2	1	1
	MW84-26050L/1	4	4	3	3	2	2	1

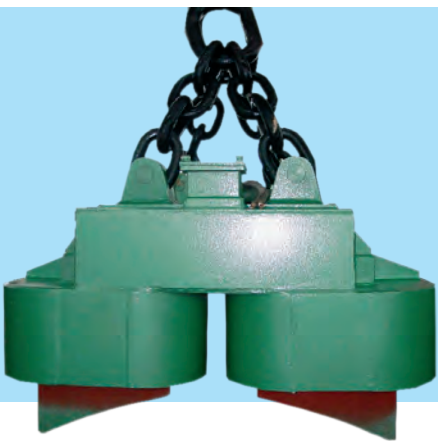
MW84-□65系列 Series MW84-□65

主要技术参数（额定电压DC-220V，通电持续率TD-60%）
Main technical data (rated voltage DC-220V, duty cycle TD-60%)

型 号 model	冷态功率 cold-state power (kW)	冷态电流 cold-state current (A)	外形尺寸 overall dimension (mm)							质量 mass (kg)
			A	B	C	D	E	F	G	
MW84-13065L/1	4.5	20.5	1300	650	1050	600	100	220	40	1370
MW84-20065L/1	6.8	30.9	2000		1050	600			50	2050
MW84-26065L/1	9.1	41.4	2600		1150	700			55	2790



吊运钢板卷专用电磁铁
Lifting Electromagnet for
coiled steel



保证搬运张数举例
How many Pieces of Steel will be definitely Lifted (For Example)

钢板宽度 width of steel plate	吸吊张数 pieces of steel to be lifted 型 号 model	钢板厚度 Plate thickness (mm)						
		6	8	10	12	16	20	32
1500 (mm)	MW84-13065L/1	10	7	6	6	5	4	3
	MW84-20065L/1	11	8	7	6	5	4	3
	MW84-26065L/1	11	8	7	6	5	4	3
2500(mm)	MW84-13065L/1	6	6	5	5	4	3	2
	MW84-20065L/1	10	7	7	6	5	4	3
	MW84-26065L/1	11	8	7	5	5	4	3
4000(mm)	MW84-13065L/1				3	2	2	1
	MW84-20065L/1		3	4	4	3	2	2
	MW84-26065L/1	5	5	5	5	4	3	2

该类产品用于吸吊钢带卷。分为垂直吊运型、水平吊运型和通用型（既可以垂直吊运有可以水平吊运）。高温型特殊电磁铁专用于卷板新型退火工艺，能在100℃~600℃高温中工作，可垂直或水平吊运带卷。

This series is used for coiled steel and has three kinds: vertical type, horizontal type and general type which can lift material both vertically and horizontally.High temperature type can be used at anneal process and can lift material vertically or horizontally at high temperature range from 100°C to 600°C.

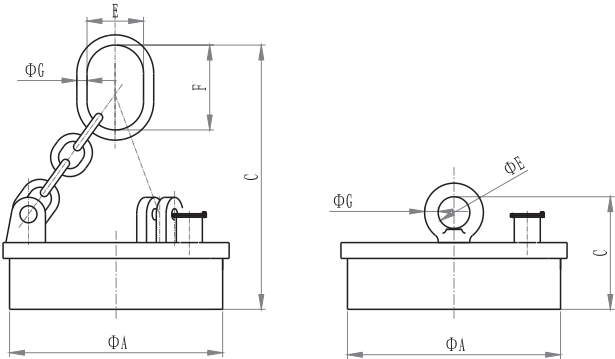
垂直吊运型——电磁铁吸附带卷的端面，适合吊运捆扎或未捆扎的带卷。

水平吊运型——电磁铁吸附带卷的侧面，带卷必须捆扎。

Vertical type – magnet attracts its end face, suitable for coiled steel bundled or unbundled.

Horizontal type – magnet attracts its side face, suitable for bundled coiled steel

MW04系列 Series MW04



外形尺寸图 overall dimension drawing



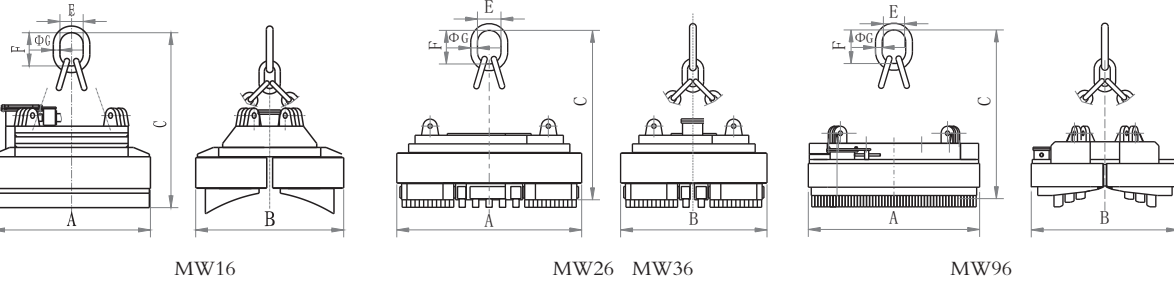
主要技术参数 Main technical data

型 号 model	冷态 功率 cold- state power (kW)	冷态 电流 cold- state current (A)	外形尺寸 overall dimension (mm)				质量 mass (kg)	单台起吊 最大尺寸 max. dimension of single set(mm) 长X宽 lengthXwidth	多台时一台 负担尺寸 each sharing dimension among multiple units(mm) 长X宽 lengthXwidth	吸 力 attracting force	
			A	B	C	D				板厚 thickness of plate (mm)	周边固定 perimeter fixed (kg)
MW04-17T/1	0.1	0.45	165	113	10	30	7	1200×1200	600×1200	3.2	≥100
MW04-22T/1	0.2	0.91	216	147	40	16	15	1400×1400	700×1400	6	≥200
MW04-26T/1	0.22	1	260	130	50	25	20	1500×1500	750×1500	10	≥300
MW04-32T/1	0.25	1.14	318	178	60	25	30	1600×1600	800×1600	10	≥600
MW04-40T/1	0.40	1.82	406	480	100/55	16	75	2500×2500	1000×2500	20	≥700
										20	≥1000
										10	≥2000
										10	≥800
										12	≥1300
										32	≥4000

MW16吸吊卧卷系列 Series MW16 for Lifting Horizontal Coil

主要技术参数 Main technical data

型 号 model	冷态 功率 cold- state power (kW)	冷态 电流 cold- state current (A)	外形尺寸 overall dimension (mm)						质量 mass (kg)	钢带卷 Coiled Steel		
			A	B	C	E	F	G		重量 weight (t)	外径 outer diameter (mm)	宽度 width (mm)
MW16-11590L/1	13.5	61.4	1160	916	1600	170	210	50	2150	9	1500	1100
MW16-12595L/1	15.5	70.5	1260	960	1600	170	250	65	3020	12	1900	900
MW16-12595L/2	13.1	59.6	1260	960	1650	170	250	65	3130	12	1900	900
MW16-190135L/1	23	104.5	1890	1330	2000	220	500	90	6230	30	2040	2100
MW16-190135L/2	22	100	1890	1330	2050	220	500	90	6370	30	2040	2100



外形尺寸图 Overall Dimension Drawing



MW26 吸吊立卷系列 Series MW26 for Lifting Vertical Coil

主要技术参数 Main technical data

型 号 model	15.8冷态 功率 cold-state power (kW)	冷态 电流 cold-state current (A)	外形尺寸 overall dimension (mm)						质量 mass (kg)	钢带卷 Coiled Steel			
			A	B	C	D	E	F		重量 weight (t)	外径 outer diameter (mm)	宽度 width (mm)	塔形 telescope (mm)
MW26-140105L/2	9.5	43.2	1440	1080	1300	50	130	180	2380	6	1300	720	≤90
MW26-160120L/2	12.5	56.8	1630	1190	1760	65	170	250	3100	8	1650	1200	≤90
MW26-150150L/2	8.2	37.3	1510	1510	1750	70	210	350	4160	11	1550	1250	≤30
MW26-165165L/1	22.5	102.3	1640	1640	1650	75	200	350	6050	13	1650	1500	≤80
MW26-175150L/2	15.8	71.8	1760	1510	1800	80	220	350	5800	17	1850	1100	≤90

MW36 吸吊立卷系列 Series MW36 for Lifting Vertical Coil

主要技术参数 Main technical data

型 号 model	15.8冷态 功率 cold-state power (kW)	冷态 电流 cold-state current (A)	外形尺寸 overall dimension (mm)						质量 mass (kg)	钢带卷 Coiled Steel			
			A	B	C	D	E	F		重量 weight (t)	外径 outer diameter (mm)	宽度 width (mm)	塔形 telescope (mm)
MW36-185L/1	17.7	80.5	1860	1860	1700	90	220	370	4350	25	1800	1250	≤15
MW36-195L/2	23.4	106.4	1740	1380	1800	80	220	350	5430	18	1800	1150	≤90
MW36-250L/1	33.5	152	2500	2500	1900	110	230	500	9500	35	2450	1900	≤40
MW36-265L/2	35.2	160	2650	2650	2320	115	230	500	10600	45	2540	1900	≤40
MW36-310L/2	36.5	166	3160	3160	2450	150	250	700	16500	60	2850	2100	≤40

MW96 吸吊立、卧卷系列 Series MW96 for Lifting Vertical & Horizontal Coil

主要技术参数 Main technical data

型 号 model	15.8冷态 功率 cold-state power (kW)	冷态 电流 cold-state current (A)	外形尺寸 overall dimension (mm)						质量 mass (kg)	钢带卷 Coiled Steel			
			A	B	C	E	F	G		重量 weight (t)	外径 outer diameter (mm)	宽度 width (mm)	塔形 telescope (mm)
MW96-135110L/2	16.2	73.6	1350	1130	1560	250	170	60	3450	10	1400	800	≤80
MW96-150130L/2	18.2	82.7	1500	1320	1760	350	200	70	4960	15	1600	1000	≤90
MW96-180150L/2	22.7	103	1800	1520	1850	350	220	80	6450	18	1850	1100	≤90
MW96-180165L/2	23.9	108	1810	1650	1980	370	230	95	8260	25	1850	1400	≤90
MW96-190185L/2	31.9	145	1900	1870	2050	500	320	110	11500	32	2150	1800	≤90



Electromagnet
起重电磁铁

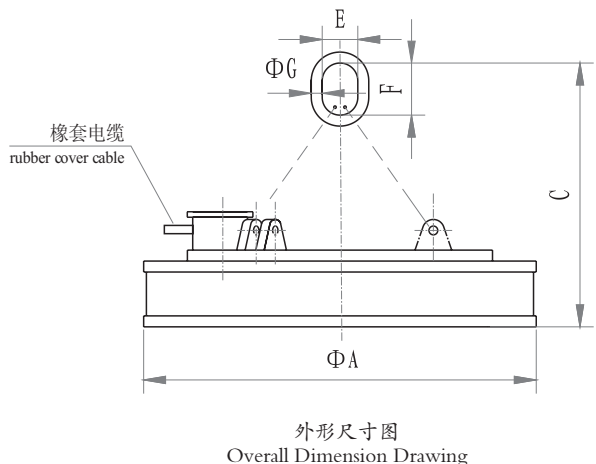
KEMEIDA

吊运厚板专用电磁铁
Lifting Electromagnet for
Thick Plate

MW03系列 Series MW03

根据整块钢板导磁率大的特性，具有自重轻，吸力大的特点。用于吸吊大型钢锭、连铸板坯、厚钢板。吊运6m以上板坯时为了避免偏心而产生倾斜。请使用两台联吊。

Owing to big magnetoconductivity, this product has light self-weight and powerful attraction force and can be used for large steel ingot, co-casting slab caster, thick steel plate. To avoid tilting caused by off-center, When to lift a slab caster more than 6m, we advice you to use combination of two units



MW03常温型 Series MW03 Normal Temperature Type

主要技术参数 (额定电压DC-220V, 通用持续率TD=60%, 吊运温度150℃以下)
Main technical data (rated voltage DC-220V, duty cycle TD=60%, steel temperature: below 150℃)

型 号 model	冷态功率 cold-state power (kW)	冷态电流 cold-state current (A)	外形尺寸 overall dimension (mm)					质量 mass (kg)	起重能力举例 An example of lifting capacity (T)
			A	C	E	F	G		
MW03-70L/1	3.3	15/10.2	700	950	110	180	32	540	6
MW03-90L/1	4.6	20.9/14.2	900	920	125	160	50	840	10
MW03-110L/1	5	22.7/15.5	1100	1080	170	250	65	1590	15
MW03-120L/1	6.4	29.1/19.8	1200	1290	170	250	65	1980	18
MW03-130L/1	6.2	28.2/19.2	1300	1400	250	400	70	3100	20
MW03-140L/1	8.2	37.3/25.3	1400	1100	200	280	90	2730	25
MW03-160L/1	12	54.5/37.1	1600	1660	220	500	90	3770	32
MW03-180L/1	17.5	79.5/54.1	1800	1910	230	500	115	5000	40
MW03-200L/1	23	105.5/72.3	2000	2200	320	500	125	6200	53

翻转、侧吊用电磁铁
Lifting Electromagnet for Turning
and Side Hung

MW03高温型 Series MW03 High Temperature Type

主要技术参数（额定电压DC-220V，通用持续率TD=60%，吊运温度150℃~600℃）

Main technical data (rated voltage DC-220V, duty cycle TD=60%, steel temperature 150~600℃)

型 号 model	冷态功率 cold-state power (kW)	冷态电流 cold-state current (A)	外形尺寸 overall dimension (mm)					质量 mass (kg)	起重能力举例 An example of lifting capacity (T)
			A	C	E	F	G		
MW03-70L/2	2.7	12.3/8.3	700	990	110	180	32	640	6
MW03-90L/2	3.4	15.5/10.5	900	1050	125	160	50	980	10
MW03-110L/2	4.4	20/13.6	1100	1140	170	250	65	1600	15
MW03-120L/2	5.46	24.8/16.9	1200	1360	170	250	85	2100	18
MW03-130L/2	7.1	32.3/21.9	1300	1392	250	400	70	3050	20
MW03-140L/2	7.9	35.9/24.4	1400	1175	200	280	90	3300	25
MW03-160L/2	8.6	39.1/26.6	1600	1720	220	500	90	4300	32
MW03-180L/2	12.5	56.8/37.9	1800	2000	230	500	115	5800	40
MW03-200L/2	17.8	80.9/53.9	2000	2200	320	500	125	7120	53

MW03超高温 Series MW03 Over-High Temperature Type

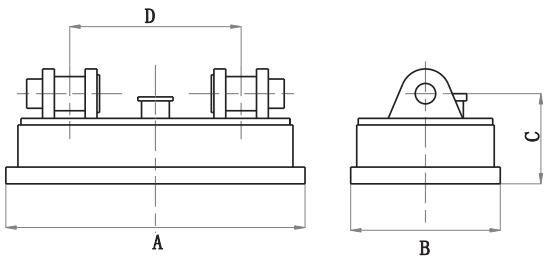
主要技术参数（额定电压DC-220V，通用持续率TD=60%，吊运温度600℃~700℃）

Main technical data (rated voltage DC-220V, duty cycle TD=60%, steel temperature 600~700℃)

型 号 model	冷态功率 cold-state power (kW)	冷态电流 cold-state current (A)	外形尺寸 overall dimension (mm)					质量 mass (kg)	起重能力举例 An example of lifting capacity (T)
			A	C	E	F	G		
MW03-70L/3	2.4	10.9/7.2	700	990	110	180	32	680	5
MW03-90L/3	2.9	13.2/8.8	900	1050	125	160	50	1050	8
MW03-110L/3	3.8	17.2/11.5	1100	1140	170	250	65	1710	13
MW03-120L/3	4.7	21.2/14.1	1200	1360	170	250	85	2250	15
MW03-130L/3	6.0	27.3/18.2	1300	1392	250	400	70	3270	17
MW03-140L/3	6.3	28.7/19.1	1400	1175	200	280	90	3540	21
MW03-160L/3	6.9	31.6/20.9	1600	1720	220	500	90	4600	26
MW03-180L/3	9.7	44.1/29.4	1800	2000	230	500	115	6200	35
MW03-200L/3	19.0	86.4/57.6	2000	2200	320	500	125	7620	46

适合于板坯上、下表面的检查和精整时的翻转作业，也可以用于厚板和管坯的吊运。当使用导向柱的起重机时能在吊运状态下使板坯翻转180°。

The product is suitable for turning slab caster for the purpose of checking & surface finishing its up and down surface and for lifting and transporting thick plate and tube caster as well. It can turn slab caster around 180° degree when being lift by the crane equipped with guide column.



外形尺寸图 Overall Dimension Drawing

MW73系列 Series MW73

适用于板坯上、下表面的检查和精整时的翻转作业，也可用于厚板和板坯的吊运。当使用导向柱的起重机时，能在吊运状态下使板坯翻转180°。

The product is suitable for turning slab caster for the purpose of checking & surface finishing its up and down surface and for lifting and transporting thick plate and slab caster as well. It can turn slab caster for 180 degree when being lift by the crane equipped with guide column.

主要技术参数 高温型（700℃以下，额定电压DC-220V，通电持续TD-60%）
Main technical data for high temperature type (below 700℃, rated voltage DC-220V, duty cycle TD-60%)

型 号 model	冷态功率 cold-state power (kW)	冷态电流 cold-state current (A)	外形尺寸 overall dimension (mm)				质量 mass (kg)	两台联用时吊运、翻转能力 lifting & transporting and turning capacity of two units (t)
			A	B	C	D		
MW73-7540L/2	2.2	10	750	400	500	420	500	6
MW73-10055L/2	2.5	11.4	1000	550	490	530	1000	10
MW73-15065L/2	4.4	20	1500	650	520	700	1870	15
MW73-20090L/2	6.0	27.3	1900	900	600	1000	3300	40
MW73-140110L/2	3.77	17.1	1400	1100	580	700	2575	28
MW73-200130L/2	7.5	34.1	2000	1300	600	1000	3500	45

MW83系列 Series MW83

侧吊电磁铁是专用于钢板吸吊时可旋转小于90°的电磁铁。可平吸侧放，或侧吸平放。一般多台联用。
This side hung product is specially used for lifting and transporting steel plate whose rotation is not more than 90°. It can attract horizontally & side discharging and attract vertically & horizontal disarging. Normally multiple units are needed.

主要技术参数 Main technical data

型 号 model	冷态功率 cold-state power (kW)	冷态电流 cold-state current (A)	外形尺寸 overall dimension (mm)						质量 mass (kg)	起吊能力 lifting capacity (T/unit)
			A	B	C	E	F	G		
MW83-8040L/1	2.4	10.9	800	400	750	125	200	45	500	2
MW83-12545L/1	3.6	16.4	1200	450	950	125	200	45	1000	3
MW83-16050L/1	4.7	21.4	1600	500	1150	125	200	50	1870	4
MW83-20055L/1	5.8	26.4	2000	550	1350	125	200	50	3300	5

该系列电磁铁用于棒材、小钢管生产线上，进行短尺和定尺产品分离。
This series is used for separating products from short length and fixed length on production line of bar and small tube.

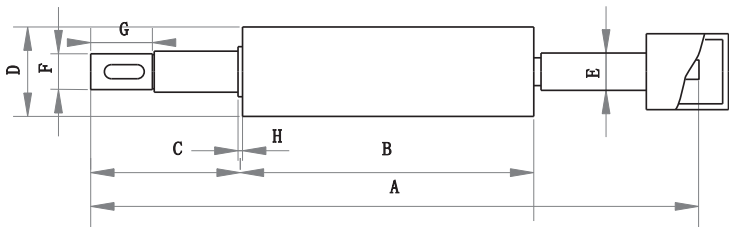
MW15系列 Series MW15

主要技术参数（常温用额定电压DC-220V，通电持续率TD-50%）
Main technical data for normal temperature type (rated voltage DC-220V, duty cycle TD-50%)

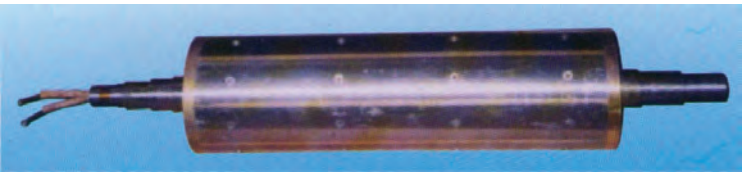
型 号 model	冷态功率 cold-state power(W)	冷态电流 cold-state current (A)	外形尺寸 overall dimension (mm)			质量 mass (kg)
			A	B	C	
MW15-15017T/1	1.83	8.35	1728	170	200	280
MW15-22020T/1	2.09	9.5	2200	200	510	820

ML01系列 Series ML01

该系列电磁辊适用于棒材定尺剪切生产线，用于输送和控制棒材剪切长度。电磁辊结构合理，磁路设计新颖，磁场分布均匀。
Electromagnetic roller is suitable for delivering and controlling cutting length of bar on fixed-length cutting production line. It has reasonable structure, novel magnetic circuit and even distribution field.



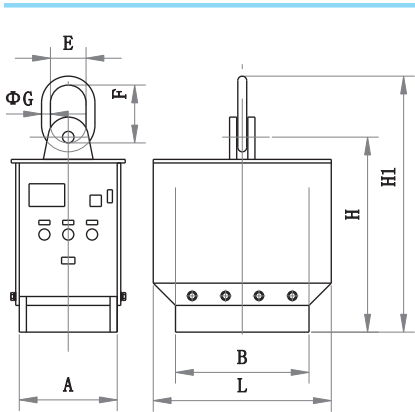
外形尺寸图 Overall Dimension Drawing



实物图 Actual Picture

主要技术参数 Main technical data

型 号 model	外形尺寸 overall dimension (mm)								质量 mass (kg)	冷态功率 cold-state power (kW)	冷态电流 cold-state current (A)	直流电压 DC Voltage (V)
	A	B	C	D	E	F	G	H				
ML01—1990T	1262	900	182	188	50	45	57	7.5	210	0.48	4.9	48
ML01—2690T	1372	900	233	260	70	60	88	13	300	1.03	5.74	170



外形尺寸图
Overall Dimension Drawing

MWE带蓄电池 Series MWE with Battery

该系列起重电磁铁采用蓄电池、控制柜及电磁铁本体集成在一起的方式，使用过程中无需拖带电缆，可适用于机械、野外等作业。产品形式分：自动吸放料、人工手动吸放料、人工手动遥控吸放料方式。

This series which includes battery, control cubide and magnet body is suitable for mechanism and fieldwork, with no need to drag cables during operation process. It has three types: auto discharging; manual discharging and manual remote discharging.

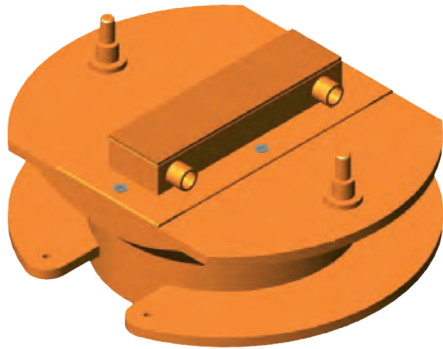
主要技术参数 Main technical data

型 号 model	额定吸力 rated lifting capacity (kg)	工作时间 working period (TD=50%)	输入电 压input voltage (V)	充入电压 charging voltage (V)	充电时间 charging time (h)	外形尺寸 overall dimension (mm)								自重 Self- weight (kg)
						A	B	E	F	ΦG	H	H1	L	
MWE-3T	300	8-10h	AC220V	DC12V	5-7h	220	240	60	100	10	460	560	350	63
MWE-5T	500	7-9h	AC220V	DC12V	5-7h	220	360	60	100	12	460	560	490	95
MWE-10T	1000	7-9h	AC220V	DC12V	10-15h	280	360	80	130	16	580	710	470	186
MWE-15T	1500	7-9h	AC220V	DC12V	10-15h	280	520	80	130	20	580	710	530	272
MWE-20T	2000	6-8h	AC220V	DC12V	10-15h	280	700	100	200	25	580	810	810	370
MWE-30T	3000	6-8h	AC220V	DC12V	6-9h	360	520	100	200	30	720	950	530	560
MWE-40T	4000	6-8h	AC220V	DC12V	6-9h	360	700	150	250	35	720	1000	810	750
MWE-50T	5000	6-8h	AC220V	DC12V	6-9h	360	1000	150	250	40	720	1000	1120	1160

LMS炉盖电磁铁 Series LMS for Furnace cover

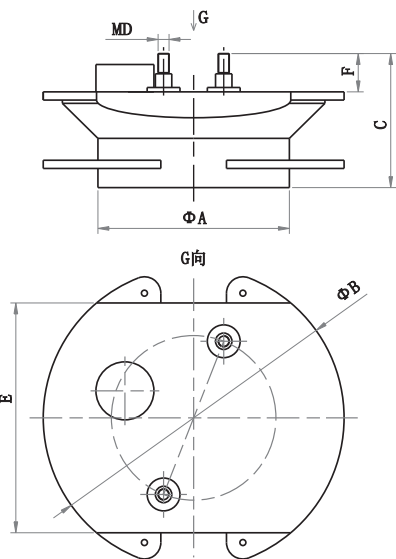
专用于焦化炉自动注煤机炉盖自动开关装置，采用专用炉盖电磁铁是开启炉盖、关闭炉盖不可缺少的专用配套产品。带有反馈信号装置。LMS1-325/H、LMS2-352/H产品是原LKD4-220、LKD6-220的更新换代产品，带有反馈信号装置。

This product which has feed-back signal is used on furnace cover equipped with auto-switch of auto coal-filling machine at coke furnace. And it is an indispensable assistant equipment to open and close the furnace cover. LKD4-220, LKD6-220 have been replaced by new types LMS1-325/H, and LMS2-352/H. They are all equipped with feed-back signal.



LMS-35T/G 外形图 Outside View

工具及其它电磁铁
Tools and Other Electromagnets



外形尺寸图
Overall Dimension Drawing

LMS系列产品特点
The Features of Series LMS

- 一、操作方便，吸附炉盖动作快,安全可靠。
User-friendly operation; quick action in attracting furnace cover; safe and reliable;
- 二、产品耐温性好，可连续工作耐温600℃以下。
Good temperature resistance, it can work continuously with the temperature under 600°C.
- 三、采用独特的隔热防辐射结构，使用寿命长。
Unique structure of heat isolation and radiation protection is adopted and serive life is long.

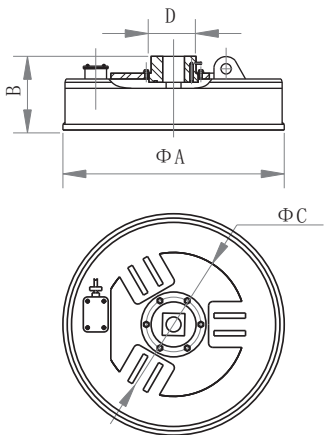
主要技术参数 Main technical data

型 号 model	冷态功率 cold-state power (kW)	冷态电流 cold-state current (A)	工作电压 working voltage (V)	外形尺寸 overall dimension (mm)						质量 mass (kg)
				A	B	C	D	E	F	
LMS1-325/H	400	2.7	110	325	500	235	20	400	70	130
LMS-450T/G	360	3.27	110		440	150				140
LKD-220	400	3.6	110	350	550	245	20	420	70	130

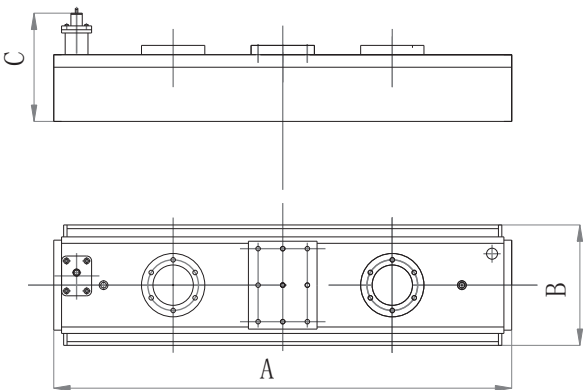
磁力对中电磁铁

Lifting Electromagnet of Magnetic Force Centering

主要用于中厚板、宽厚板生产线上的钢板对中，便于钢板整齐剪切。
Mainly used for steel plate centering on the product line of medium-thick and wide-thick plate to cut steel plate trimly.



LM-77L/G外形尺寸图
Overall Dimension Drawing



MLJ-10/H-G外形尺寸图
Overall Dimension Drawing

主要技术参数 Main technical data

型 号 model	冷态功率 cold-state power (kW)	冷态电流 cold-state current (A)	外形尺寸 overall dimension (mm)				质量 mass (kg)
			A	B	C	D	
LM-77L/G	3.5	15.7	770	335	640	165	520
MLJ-10/H-G	1.56	14.2	1400	370	310		450
MLJ-10035T/G	1.8	8.18	1000	350	255		400

翻转臂用翻转电磁铁

Lifting Electromagnet of Turning Arm

主要技术参数 Main technical data

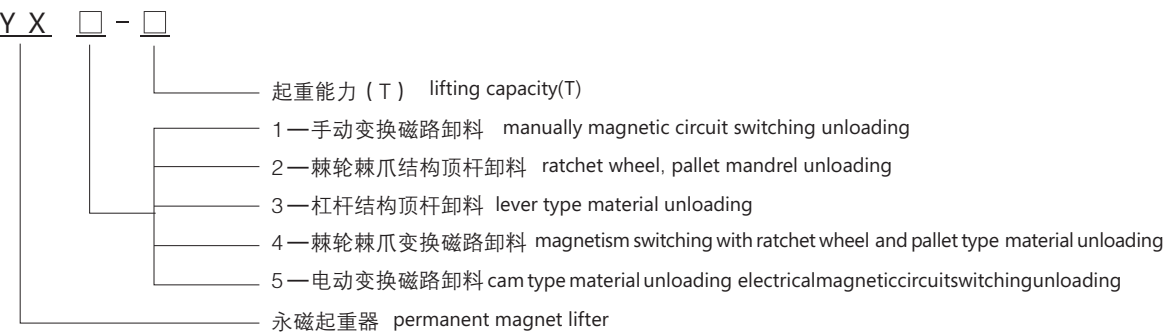
型 号 model	外形尺寸 overall dimension (mm)					质量 mass (kg)	冷态功率 cold-state power (kW)	冷态电流 cold-state current (A)	DC电压 DC voltage (V)
	A	A1	B	C	D				
MWF-16050L/1	1600	1000	500	500	F310	1000	2.75	12.5	220
MWF-8030L/2	800		300	340		350	3.14	28.5	110

选型指南

Guide for Model Selection

- 我公司永磁起重器产品系列众多，针对性较强，请您按以下选型指南对照选型。
- We have many series for these permanent products; please choose the right type as per the guide.**
- 当被吸物为钢板时，所有系列均适用。但各个系列各有所长，**YX1**系列适用吊运小型板料，手动卸料；**YX2**系列吊运短而厚的钢板，自动卸料；**YX3**系列适用于吊运长而薄的钢板，手动卸料；**YX4**系列适用范围广，自动卸料，但禁止空载运行；**YX5**系列吊运重而厚的钢板，但要求提供电源。
- All series are suitable for steel plate, but each series has his advantage, Series YX1 is used for small size and manual discharging; Series YX2 is for short and thick size and; Series YX3 is for long and thin steel size and manual discharging; Series YX4 has wide application rage and auto discharging, but not allowed to be transported without load; Series YX5 is for thick and heavy size and need power supply.**
- 吊运单根圆形物料如圆钢、钢管等选用**YX1**系列，吊运多根圆形物料请选用**YX4**、**YX5**系列。
- Use Series YX1 for lifting and transporting single round material like round steel, steel tube, etc. Use Series YX4 and YX5 for lifting and transporting multi-pieces of round materials.**
- 要求自动卸料的请使用**YX2**、**YX4**、**YX5**系列。
- Use Series YX2, YX4 and YX5 for auto discharging.**
- 对于厚度小于**6mm**的薄钢板只能选用**YX1**、**YX4**、**YX5**系列。
- Use Series YX1, YX4 and YX5 for thin plate (thickness less than 6 mm).**
- 当采用多台联吊时，建议选用**YX3**、**YX4**、**YX5**系列，因为这几种系列能保证较好的同步性。
- Use Series YX3, YX4 and YX5 for multiple units, for they have good synchronism.**
- YX2**、**YX3**、**YX5**均有最小卸料尺寸的要求，选型及操作时注意被吸物是否满足要求。
- Series YX2, YX3 and YX5 have minimun dimension demand on material to be discharged. Therefore please take note of it.**
- YX5**系列能实现空中卸料。
- Series YX5 can discharge in the air.**
- 每种系列的永磁起重器均有起重能力的范围。
- Each series has it range of lifting capacity.**
- 若要求调整吸力、侧吊、吊运特殊物料诸如钢带卷、钢坯等情况复杂时宜与我公司技术部门探讨，根据您的特殊用途、特殊环境进行特殊设计，以便达到最佳效果。
- Your specific requirements like do some adjustment on attraction power, side hung or for some special materials including coiled steel, steel billet, etc., are supposed to let our technology department know at first. So that we can design it specially to reach the optimal effect**

型号说明 Model Designation

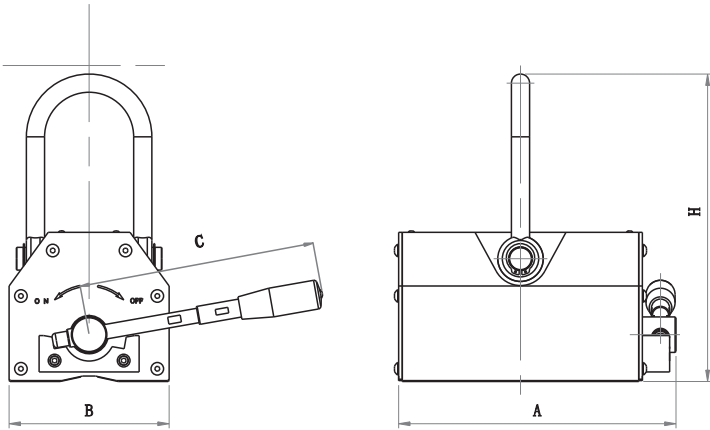


YX1系列 Series YX1

概述 Brief

YX1系列永磁起重器是由强磁钕铁硼磁性材料组成的特殊磁路系统，它通过手柄的旋向，控制磁路开关。具有不需励磁电源，体积小，自重轻，吸持力大，操作方便，使用安全，磁力恒久不衰的特点。它广泛适用于工厂，码头，仓库，交通运输部门吊装搬运钢板、钢锭等导磁性物体。

Series YX1 (Permanent-magnet lifter) has special strong magnetic circuit made by Nd-Fe-B magnetic materials whose switch is controlled by turning handle. It has advantages of no using electricity, compact, light self-weight, huge attraction force, convenient and safe operation and permanent magnetic force and is used widely to lift and transport magnetic materials such as steel plates, steel ingot at factories, docks, warehouses and transportation.



外形尺寸及安装示意图
Overall Dimension & Installation Drawing



实物图
Actual Picture

永磁起重器
Permanent Magnet Lifter

特点 Features

1. 采用计算机模拟磁路设计，磁场分布合理，透磁深度大。
Use computer to simulate magnetic circuit to get reasonable field distribution and deep penetration.
2. 在卸料状态下工作面不带磁。
It has no magnetism during unloading process.
3. 不需励磁电源，不需冷却系统。
No excitation power or cooling system is required.
4. 省电节能，故障率低。
Energy-saving and low faults.
5. 操作简单，运行安全可靠。
User-friendly operation; safe and reliable.

主要技术参数 Main technical data

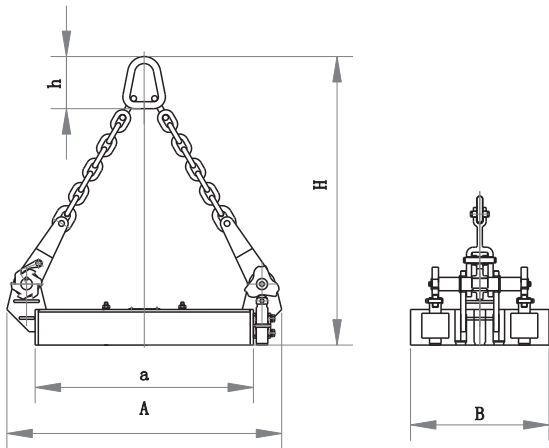
型 号 model	额定起重能力 rated lifting capacity (kg)	圆柱形额定起重能力 rated lifting capacity of column type(kg)	最大拉脱力 max. pull force (kg)	外形尺寸 overall dimension (mm)				使用温度 working temperature (°C)	质量 mass (kg)
				A	B	C	H		
YX1-0.15	150	75	450	72	102	67	126	<80	6
YX1-0.2	200	100	600	82	112	77	135	<80	8
YX1-0.3	300	150	900	92	162	91	155	<80	10
YX1-0.5	500	250	1500	122	232	117	196	<80	22
YX1-0.8	800	400	2400	142	242	145	215	<80	28
YX1-1	1000	500	3000	176	258	163	285	<80	50
YX1-2	2000	1000	6000	234	378	212	426	<80	125
YX1-3	3000	1500	9000	286	458	261	521	<80	220

YX2系列 Series YX2

概述 Brief

YX2系列内部采用铁氧体磁性材料制作，它利用棘轮棘爪机构，通过行车的起升一起控制顶杆，自动完成吸、放料工作。具有不需励磁电源，操作方便，使用安全等特点。它广泛适用于工厂，码头，仓库，交通运输部门吊装搬运短而厚的钢板。特设气隙调整杆，可方便的调整磁力大小。但它在卸料状态下，工作底面仍带磁性。

Series YX2 is made of ferrite adopting ratchet wheel and pallet mechanism together with the raise of traveling crane to control the mandril and automatically absorb and unload the materials, featuring no electricity consumption, convenient and safe in operation. It is widely used for lifting and transporting short and thick plates at factory, dock, warehouse and transportation department. The air gas adjusting rod is equipped in particular which can adjust the magnetic force conveniently. Its working face still remain magnetism, during unloading process.



YX2系列外形尺寸图
Overall Dimension Drawing



实物图
Actual Picture

主要技术参数
Main technical data

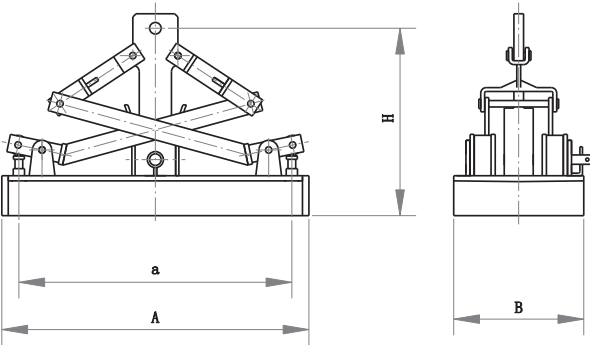
参 数 data 型 号 model	起重能力 lifting capacity (kg)	最小卸料能力 Min. discharging capacity (kg)	最小卸料板厚 Min. thickness of discharging plate (mm)	最小吸料外形长X宽 Min.dimension of attached material 长L X 宽W (mm)	外形尺寸 overall dimension (mm)					质量 mass (kg)
					A	a	B	H	h	
YX2-0.2	200	20	3	440×185	440	350	185	525	112	50
YX2-0.5	500	50	5	560×275	560	470	275	645	112	80
YX2-1	1000	100	8	720×355	720	540	355	760	165	140
YX2-2	2000	200	10	870×436	870	690	436	905	165	140
YX2-3	3000	500	14	1100×410	1100	950	410	1090	180	410
YX2-5	5000	1500	20	1270×565	1270	1010	565	1130	220	640

YX3系列 Series YX3

概述 Brief

YX3系列内部采用铁氧体磁性材料制作，它运用杠杆机构，人工可轻松抽动拉杆，完成吸、放料工作。具有不需励磁电源，操作方便，使用安全等特点。它广泛适用于工厂，码头，仓库，交通运输部门多台吊装搬运长而薄的钢板，杠杆式卸料机构能保证较好的同步性。特设气隙调整杆，可方便的调整磁力大小。但它在卸料状态下，工作底面仍带磁性。

Series YX3 which is made of ferrite adopts lever mechanism and can draw rod easily to absorb and discharge materials, featuring no electricity consumption, convenient and safe in operation. It is widely used for transporting long and thin steel plates in combined units at factory, dock, warehouse and transportation. Discharging mechanism equipped with lever has good synchronism. And magnetic force can be adjusted conveniently through air gas adjusting rod. Its working face still remain magnetis, during unloading process.



YX3系列外形尺寸图
Overall Dimension Drawing



实物图
Actual Picture

主要技术参数

Main technical data

型 号 model	参 数 data	起重能力 lifting capacity (kg)	最小卸料能力 Min. discharging capacity (kg)	最小卸料板厚 Min. thickness of discharging plate (mm)	最小吸料外形长X宽 Min.dimension of attached material 长L X 宽W (mm)	外形尺寸 overall dimension (mm)				质量 mass (kg)
						A	a	B	H	
YX3-1		1000	100	5	824×256	824	586	256	570	240
YX3-2		2000	200	8	960×376	960	848	376	600	320
YX3-3		3000	360	12	960×406	960	848	406	680	420
YX3-5		5000	1200	16	1090×516	1088	848	516	548	650

YX4系列 Series YX4

概述 Brief

YX4系列是采用稀土高性能永磁材料精心设计而成，具有吸力大、体积小、高度节能、安装方便、安全可靠、使用寿命长、能自动完成卸料过程等特点，可广泛用于机械、化工、码头、船厂、钢结构厂等需要搬运低于100℃的导磁性钢坯、钢板、圆钢等场合。它能与行车起重机、汽车起重机等所有起重设备配套使用，既可单台使用，也可多台组合使用，是节约能源、减轻劳动强度、提高劳动生产率的理想吊具。



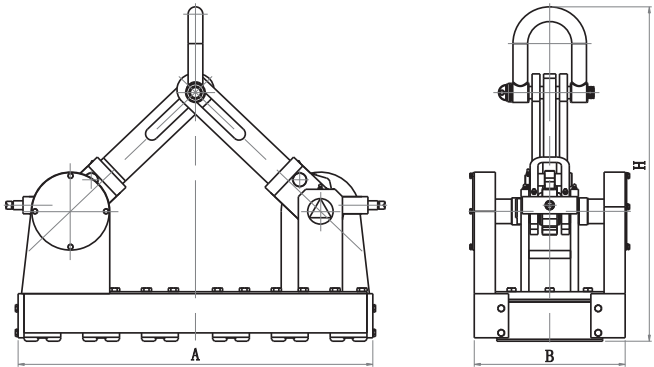
实物图 Actual Picture

Series YX4(Permanent-magnet lifter) which are made of the rare earth has advantages of powerful attraction force, compact, high energy-saving, convenient installation, reliable performance, long service life, and automatically discharging materials. It's widely been used for lifting and transporting magnetic materials less than 100℃ such as steel billet, steel plate, round steel and steel scraps in mechanical & chemical industry, docks, ship factories and steel factories. It is assistant equipment to all lifting device such as crane and auto lifter and can be put into operation with sigle unit or multiple units. It is an ideal lifter for saving energy, reducing labror tension and improving production rate.

工作原理 Woring principle

YX4系列由永磁铁和磁极组成若干单元磁路，每一个单元磁路的永磁铁可由传动机构带动在单元磁极内转动0~90°，整体形成开、闭磁路，达到吸、卸料的目的。

Series YX4 (Permanent-magnet lifter) is made of several magnetic circuit, each magnetic circuit can be rotated 0~90° inside each magnetic pole by actuating mechanism, to form open and close magnetic circuit as a whole for attracting or unloding materials.



YX4系列外形尺寸图
Overall Dimension Drawing

1. 起重机吊钩 crane hook
2. 连杆 rod
3. 防空载挡板 no-load defencing fender
4. 棘爪 pallet
5. 弹簧 spring
6. 棘轮 ratchet wheel
7. 状态指示牌 state indication board
8. 保护罩 protective cover
9. 工作面(磁极) working face(magnetic pole)

电磁铁常用连接方式
Magnet Connection Drawing

主要技术参数 Main technical data

型 号 model	参 数 data	额定起重能力 rated lifting capacity (kg)	最大拉脱力 Max. pull force (kg)	外形尺寸 overall dimension (mm)			质量 mass (kg)
				A	B	H	
YX4-1		1000	3500	550	350	518	130
YX4-2		2000	7000	625	460	672	250
YX4-3		3000	10500	690	470	806	386
YX4-5		5000	17500	970	580	1020	575
YX4-10		10000	35000	1440	800	1440	1197
YX4-20		20000	70000	1640	800	1560	2110

YX5系列 Series YX5

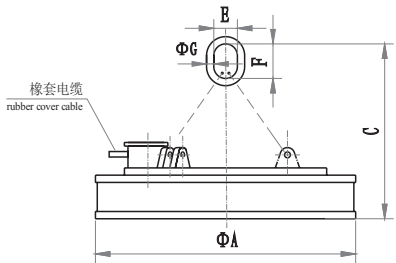
概述 Brief

YX5系列是采用稀土高性能永磁材料精心设计而成，它通过电动执行机构完成磁路的转换达到快速卸料的目的，因为大吨位的起重器要克服其内部的磁吸合力进行卸料采用人工是不实际的。可广泛用于机械、化工、码头、船厂、钢构厂等需要搬运低于100℃的导磁性钢坯、钢板、圆钢等场合。

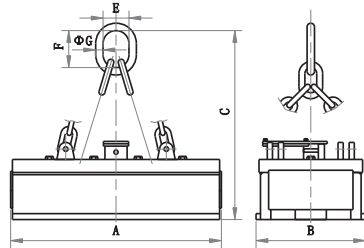
Series YX5 which are made of the rare earth can fulfill the aim of discharging quickly through the shift of circuit controlled by motor, because for some large size lifter, it's no way to overcome its inside pick-up force by manual. It is widely used for transporting magnet-conductive steel caster, steel plates, round steels and scrap steels with a temperature under 100℃ in the machinery industry, chemical industry, dock, ship factory, steel structure factory and etc.,

主要技术参数 Main technical data

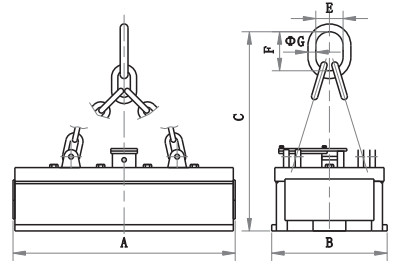
型号 model	外形尺寸 overall dimension(mm)				自重 self-weight (kg)	额定起重 rated lifting capacity (kg)
	长 L	宽 W	磁体高 magnet height	总高 total height		
YX5-20	1640	800	260	1300	2210	20000
YX5-30	1950	1060	310	1600	3810	30000
YX5-40	2410	1060	350	1900	4710	40000
YX5-50	2410	1220	350	1900	5470	50000



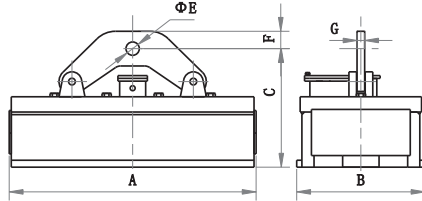
单挂点A型：单挂点与行车主钩或挂梁联接
Single Suspending Point Mode A: the single suspending point is jointed with crane hook or suspension beam



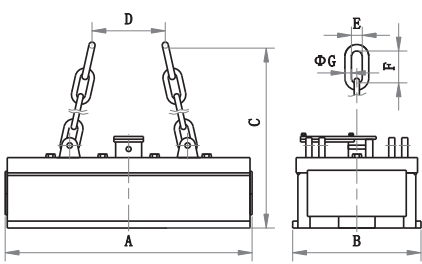
单挂点A I 型：单挂点与行车主钩或挂梁联接
Single Suspending Point Mode AI: the single suspending point is jointed with crane hook or suspension beam



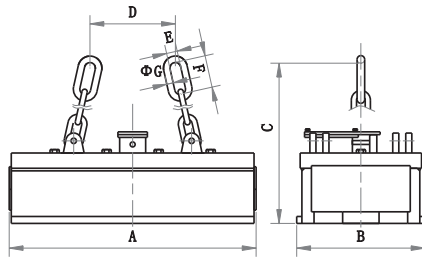
单挂点A II 型：单挂点与行车主钩或挂梁联接
Single Suspending Point Mode AII: the single suspending point is jointed with crane hook or suspension beam



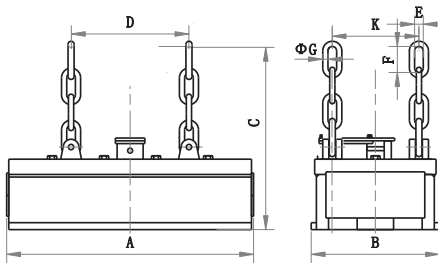
单挂点B型：吊攀与行车或挂梁联接
Single Suspending Point Mode B: the single lifting hook is jointed with crane or suspension beam.



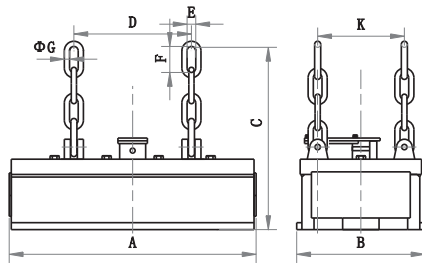
双挂点C I 型：双挂点与行车主钩或挂梁联接
Double Suspending Points Mode CI: the double suspending points are jointed with crane hook or suspension beam.



双挂点C II 型：双挂点与行车主钩或挂梁联接
Double Suspending Points Mode CII: the double suspending points are jointed with crane hook or suspension beam.



四挂点D I 型：四挂点与行车主钩或挂梁联接
Four Suspending Points Mode DI: the four suspending points are jointed with crane hook or suspension beam.



四挂点D II 型：四挂点与行车主钩或挂梁联接
Four Suspending Points Mode DII: the four suspending points are jointed with crane hook or suspension beam.

电磁铁配套控制设备
Auxiliary Control Equipment

普通电控 Common Electric Control Equipment

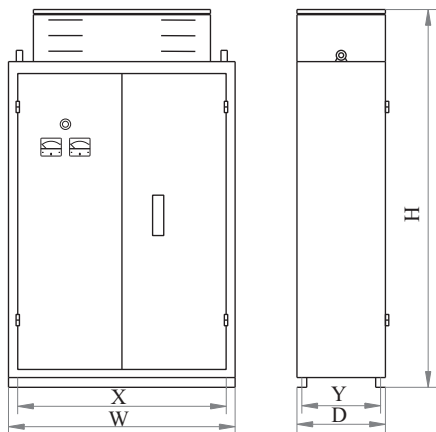
STQ (M) L 定电压控制方式整流控制设备
Commutating Control Equipment Series
STQ(M)L In Fixed Voltage

该系列控制柜是将三相交流电源由整流变压器降压后，再经单相（三相）桥式整流单元获得直流220V电压。整个控制柜由自动空气开关、整流变压器、整流单元、直流接触器等主要部件构成；电路设置有短路、过电压等保护措施；具有结构简单、体积小、重量轻、工作可靠、维修方便等特点。

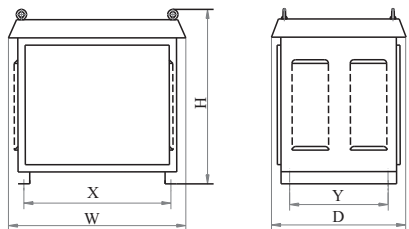
在控制柜额定容量大于19kW时，整流变压器带罩外附；改进型不配整流变压器，直接由三相交流电源进行桥式整流获得直流电压。

This series drop 3-phase AC power supply through rectifier transformer and then get 220V DC through single-phase (3-phase) rectifier bridge unit. Each cabinet consists of auto air switch, rectifier transformer, rectifier unit, DC contactors, etc., The circuit has safe protections like short circuit and over voltage. It has advantages of simple structure, compact, light weight, reliable performance and convenient for repair.

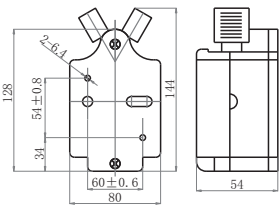
The rectifier transformer will be equipped with outside cover when the rated capacity of cabinet is more than 19 kW. The improved type has no rectification transformer, for it can rectify 3-phase AC power through bridge type rectifier directly and thus get DC..



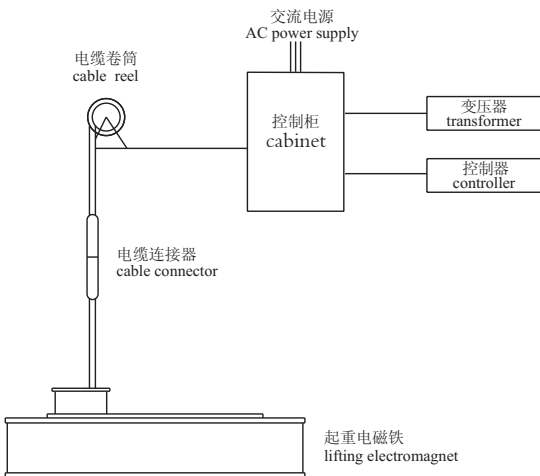
控制柜
cabinet



变压器
Transformer

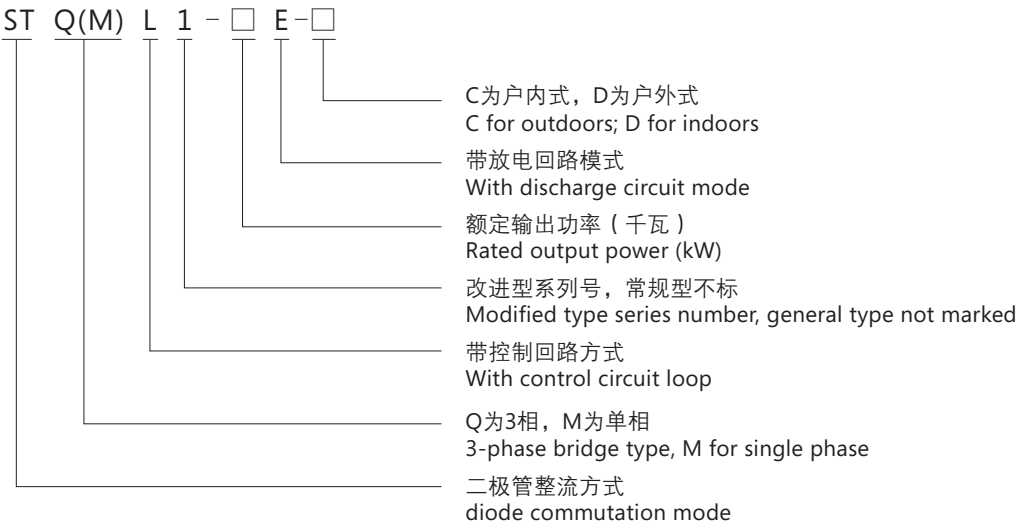


控制器
Controller



STQ(M)L 方式构成图
STQ(M)L connection scheme

型号说明 Model Designation



主要技术参数 Main technical data

型 号 model	主要参数 main data	电源相数 phase No.	输入交流电压 Input AC voltage (V)	输出直流电压 Output DC Voltage (V)	额定输出功率 rated output power (kW)
STML-3E		二相 2-phase	380	110	3
STML-4E		二相 2-phase	380	220	4
STQL-7E		三相 3-phase	380	220	7
STQL-9E		三相 3-phase	380	220	9
STQL-14E		三相 3-phase	380	220	14
STQL-19E		三相 3-phase	380	220	19
STQL-25E		三相 3-phase	380	220	25
STQL-32E		三相 3-phase	380	220	32
STQL-38E		三相 3-phase	380	220	38
STQL-45E		三相 3-phase	380	220	45

电磁铁配套控制设备
Auxiliary Control Equipment

成套设备及外形安装参考尺寸
Corollary equipment & overall dimension (for reference)

成套设备 corollary unit		数 量 number										外形及安装参考尺寸 overall dimension & installation size for reference						单台 质量 unit mass (kg)		
名 称 Name	型 号 Model	STML-3E-C	STML-4E-C	STQL-7E-C	STQL-9E-C	STQL-14E-C	STQL-19E-C	STQL-25E-C	STQL-32E-C	STQL-38E-C	STQL-45E-C	W	D	H	X	Y	安装孔 installation hole			
整流控制柜 Rectification control cabinet	STML-3E-C	1										900	450	1300	850	400	4-Φ14	120		
	STML-4E-C		1									900	450	1500	850	400		135		
	STQL-7E-C			1								900	450	1500	850	400		180		
	STQL-9E-C				1							1000	450	1500	950	400		230		
	STQL-14E-C					1						1000	450	1500	950	400		240		
	STQL-19E-C						1					1000	450	1500	950	400		220		
	STQL-25E-C							1				900	450	1300	850	400		230		
	STQL-32E-C								1			900	450	1300	850	400		250		
	STQL-38E-C									1		1000	450	1400	850	400		280		
	STQL-45E-C										1	1000	450	1400	850	400				
整流变压器 Rectification transformer	ZDG-3.5/0.5	1										变压器内附 transformer inside							4-Φ14	180
	ZDG-4.5/0.5		1																	
	ZSG-5.5/0.5			1																
	ZSG-7/0.5				1															
	ZSG-11/0.5					1														
	ZSG-15/0.5						1													
	ZSG-25/0.5							1				610	480	580	480	300	4-Φ14	200		
	ZSG-30/0.5								1			660	515	630	530	335		225		
	ZSG-35/0.5									1		700	535	680	570	355		255		
	ZSG-40/0.5										1									
控制器 controller	LX8-5	1										144	80	54	54	60	2-Φ6.5	0.5		

注：当控制柜为户外型时，控制柜厚度方向相应增加50mm；在柜体顶部宽度方向增加30mm,前后各突出50mm,当控制柜为改进型时无整流变压器。 所控电磁铁的额定电压应与控制柜的输出电压相符，所控电磁铁冷态功率应不大于控制柜的额定输出功率。 控制柜使用环境超过40℃时，请用户在订货时特别注明。

Note: For outdoor type, add an extra 50 mm at the thickness of cabinet, 30mm at the width of the top and 50mm along both forward and backward direction; there's no rectification transformer if the control cabinet belongs to improved type. Rated voltage of the magnet should match with output voltage of cabinet and magnet power in cold-state shall be less than rated output power of cabinet. If ambient temperature of the cabinet is over 40℃ please state clearly when place an order.

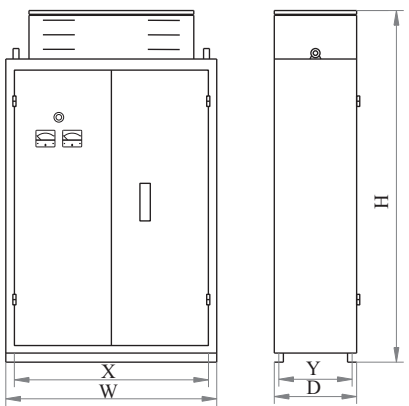
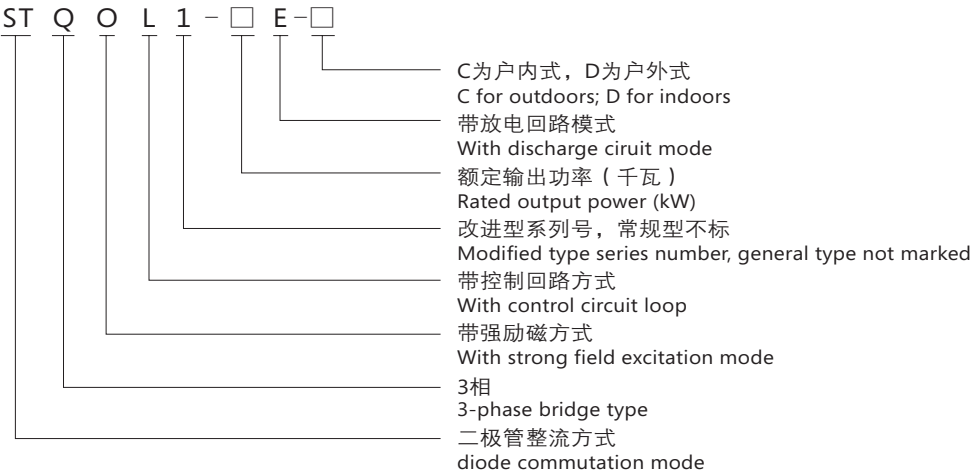
STQOL系列强励磁控制方式整流控制设备
Series STQOL Rectifier Control Equipment with Strong Field

本系列产品具有吸料时强励磁（DC290V）搬运时弱励磁（DC220V）保持特点，不仅可以降低电力消耗，而且可以使吸吊量增加，是废钢等松散物料搬运现场使用的理想配套设备，一般能使作业效率提高15%~30%。

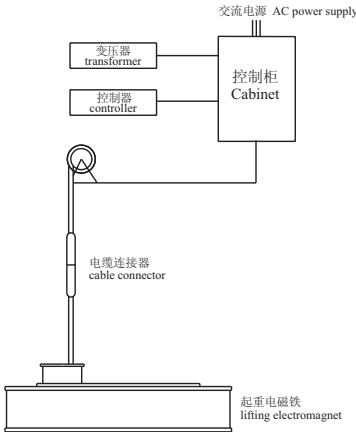


This series which has advantages of keeping weak excitation (DC220V) when transport materials while strong excitation (DC290V) when attract materials can reduce energy consumption and increase attracting capacity. It is ideal assistant equipment for lifting and transporting loose materials like scraps with better efficiency up to 15% ~ 30%.

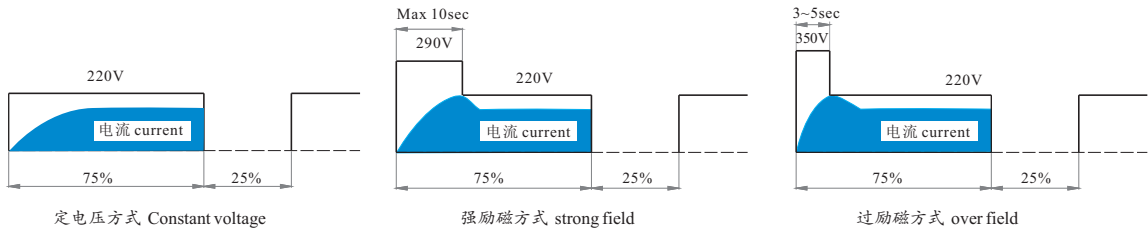
型号说明 Model Designation



控制柜
Cabinet



STQOL方式构成图
STQOL Connection Scheme



控制方式与电压电流特性曲线

电磁铁配套控制设备
Auxiliary Control Equipment

主要技术参数 Main technical data

主要参数 main data 型 号 model	电源相数 phase No.	输入交流 电压 Input AC voltage (V)	输出直流 电压 Output DC power (V)	额定输出 功率 rated output power (kW)
STQOL-9E	三相 3-phase	380	290/220	15.6/9
STQOL-14E	三相 3-phase	380	290/220	24.2/14
STQOL-19E	三相 3-phase	380	290/220	32.7/19
STQOL-25E	三相 3-phase	380	290/220	43.4/25
STQOL-32E	三相 3-phase	380	290/220	55.6/32
STQOL-38E	三相 3-phase	380	290/220	66/38
STQOL-45E	三相 3-phase	380	290/220	78/45

成套设备及外形安装参考尺寸
Corollary equipment & overall dimension (for reference)

成套设备 corollary unit		数 量 number							外形及安装参考尺寸 overall dimension & installation size for reference						单台 质量 unit mass (kg)
名 称 Name	型 号 Model	STQOL-45E-C	STQOL-38E-C	STQOL-32E-C	STQOL-25E-C	STQOL-19E-C	STQOL-14E-C	STQOL-9E-C	W	D	H	X	Y	安装孔 installation hole	
整流控制柜 Rectification control cabinet	STQOL-9E-C	1							1000 (900)	450	1550	960 (860)	400	4-Φ14	180
	STQOL-14E-C		1						1000 (900)	450	1550 (1650)	960 (860)	400		230
	STQOL-19E-C			1					1000 (900)	450	1750 (1650)	960 (860)	400		240
	STQOL-25E-C				1				1000 (900)	450	1750 (1650)	960 (860)	400		220
	STQOL-32E-C					1			1100 (900)	450	2000 (1650)	1060 (860)	400		230
	STQOL-38E-C						1		1100 (900)	450	2000 (1650)	1060 (860)	400		250
	STQOL-45E-C							1	1100 (900)	450	2000 (1650)	1060 (860)	400		280
整流变压器 Rectification transformer	ZSG-7/0.5	1							460	460	480	330	280		90
	ZSG-11/0.5		1						560	490	510	430	310	4-Φ14	110
	ZSG-15/0.5			1					610	480	580	480	300		124
	ZSG-25/0.5				1				660	515	630	530	335		180
	ZSG-30/0.5					1			700	535	680	570	355		200
	ZSG-40/0.5						1		700	535	680	570	355		255
	ZSG-45/0.5							1	700	535	680	570	355		270
操作盒 operational box	SC-BX1-22Φ	1							80	70	65	49	54	4-Φ6.5	0.5

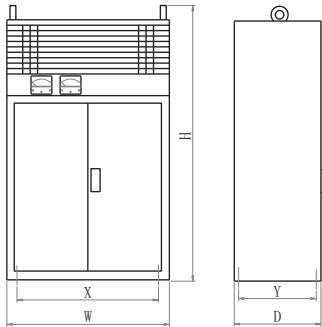
注：1、括号内数字为改进型尺寸。
2、当控制柜为户外型时，控制柜厚度方向相应增加50mm；在柜体顶部宽度方向增加30mm,前后各突出50mm,当控制柜为改进型时无整流变压器。
3、所控电磁铁的额定电压应与控制柜的输出电压相符，所控电磁铁冷态功率应不大于控制柜输出电压为DC220V时的输出功率。
4、控制柜使用环境超过40℃时，请用户在订货时特别注明。

Note: 1. The figs. in the bracket refers to dimension of the improved type.
2. For outdoor type, add an extra 50 mm at the thickness of cabinet , 30mm at the width of the top and 50mm along both forward and backward direction; there's no rectification transformer if the control cabinet belongs to improved type.
3. Rated voltage of the magnet should match with output voltage of cabinet and magnet power in cold-state shall be less than rated output power of cabinet.
4. If ambient temperature of the cabinet is over 40℃ please state clearly when place an order.

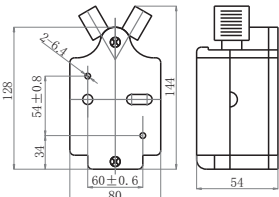
DKP系列整流控制设备
Series DKP Rectification Control Equipment

本系列产品采用三线二相半波整流方式，具有线路简单、结构紧凑、体积小、重量轻等特点。

This series which adopts a mode of three-wire two-phase half-wave Rectifier has advantages of simple lines, compact and light.

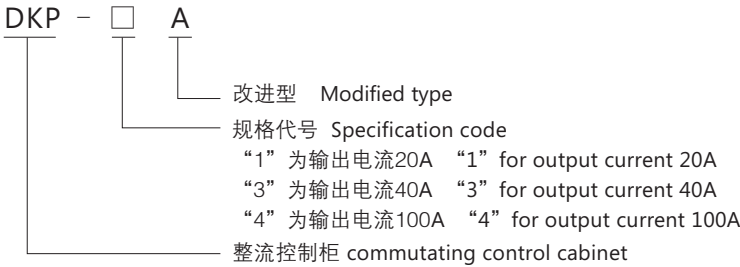


控制柜 Cabinet



控制器 Controller

型号说明 Model Designation



主要技术参数 Main technical data

主要参数 main data 型 号 model	电源相数 phase No.	输入交流 电压 Input AC voltage (V)	输出直流 电压 Output DC voltage (V)	额定输出 电流 Rated Current (A)
DKP-1	三 相 3-phase	380	220	20
DKP-3	三 相 3-phase	380	220	40
DKP-4	三 相 3-phase	380	220	100
DKP-1A	三 相 3-phase	380	170~240	20
DKP-3A	三 相 3-phase	380	170~240	40
DKP-4A	三 相 3-phase	380	170~240	100

电磁铁配套控制设备
Auxiliary Control Equipment

成套设备及外形安装参考尺寸
Corollary equipment & overall dimension (for reference)

成套设备 corollary equipment		数量 number						外形及安装参考尺寸 overall dimension & installation size for reference						单台 质量 unit mass (kg)
名称 Name	型号 Model	DKP-1	DKP-3	DKP-4	DKP-1A	DKP-3A	DKP-4A	W	D	H	X	Y	安装孔 installation hole	
整流控制柜 Rectification control cabinet	DKP-1	1						750	400	1170	710	350	4-Φ14	83
	DKP-3		1											85
	DKP-4			1										110
	DKP-1A				1									83
	DKP-3A					1								85
	DKP-4A						1							110
控制器 controller	LX8-5	1						144	80	54	54	60	2-Φ6.5	0.5

注：1、DKP-1;DKP-3;DKP-4 为三线二相式半波整流控制柜。
2、DKP-1A;DKP-3A;DKP-4A为三线二相式半波可控整流控制柜。当电网电压偏高或偏低时,可使输出电压在170~240V内调整,从而使输出电压基本接近220V。

Note: 1. DKP-1,DKP-3 and DKP-4 are 3-wire 2-phase half-wave rectifier control cabinet.
2. DKP-1A,DKP-3A and DKP-4A are 3-wire 2-phase half-wave controllabe Rectifier control cabinets. When network voltage is overhigh or overlow, they can adjust ourput voltage with the range from 170 to 240V to approach 220V.

停电保磁设备
Battery Backup Equipment

停电保磁柜有两种系列产品：GTB系列产品适用于一般定电压方式控制场合；GTBT系列产品具有停电保磁功能的同时具有调磁功能，通过自由调节电磁铁的励磁电压，可方便地控制吸放钢板的张数。此两系列产品为本公司对GTB6和LPB1系列产品的技术改造升级产品，提高了原系列产品的使用可靠性和技术先进性，明显减少了用户的维护工作量。

There are two series of backup battery unit:: 1, series GTB; it is designed for controlling constant voltage; 2, series GTBT. It has functions of magnetism sustaining as well as magnetism regulating in case of power-cut and it can regulate the numbers of plates to be attracted through regulate the field voltage of magent freely.These series are improved type which replaced series GTB6 and LPB1 and their reliability and technical advantages got improved. And at the same time maintenance get reduced largely



主要特点
Main Features

- 1、作业中遇电网突然停电时，自动切换电源，在设定时间内保证被吸物不致掉落，并可打开卷扬机抱闸，将被吸物安全放下。

2、设备成套性好，配有专门的充电设备及完善的显示检测报警装置。

3、采用阀控式全密封免维护铅酸电池，充电时无需人值守，监控电池状况自动切换充电方式，使用寿命长。

4、装置轻巧；安装时无特殊要求；维护保养方便。

5、设备具有极强的扩展性，能满足用户需要的各种联锁及多种控制方式，如驾操、遥控、集控等。
1. It will auto shift power supply in case of sudden failure during operation. The attached materials will be guaranteed not to fall down during its sustaining time, and thus ensure the material be place down safely through the brake of windlass.

2. The unit is equipped with full set such as charging device and disply testing and alarm-giving system.

3. Valve-controlled, full-sealed plumbic acid batteries which asks for no maintenance, no employee around when charging, shift charging mode automatically through self-monitoring and a long service life are adopted.

4. The unit is light and compact. There is no special requirement on installation; easy and convenient in maintenance and service.

5. The unit which has great expansibility has all kinds of interlockers and many control modes to meet your demand such as drivingroom control, remote control, centralized control, etc.,

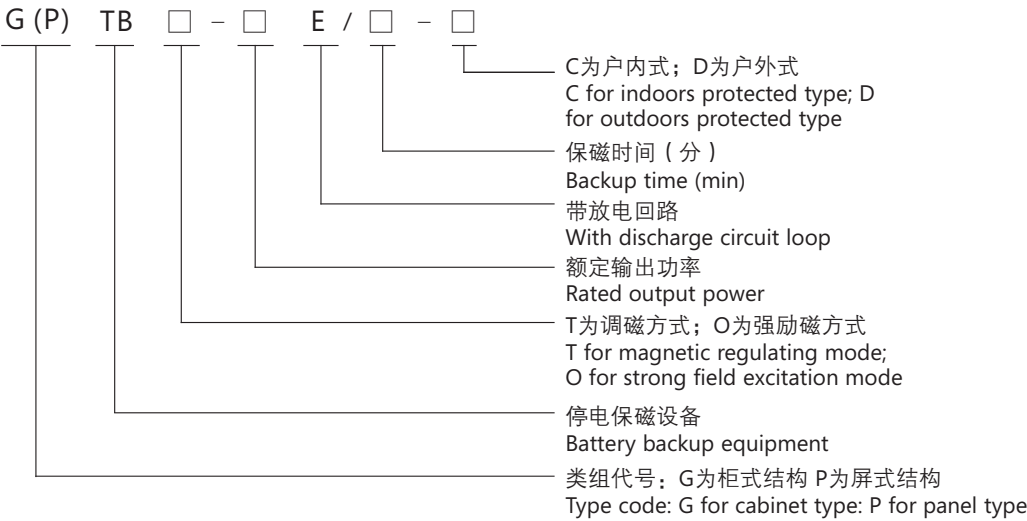
电磁铁配套控制设备
Auxiliary Control Equipment

选型及注意事项
Note for Model Selection

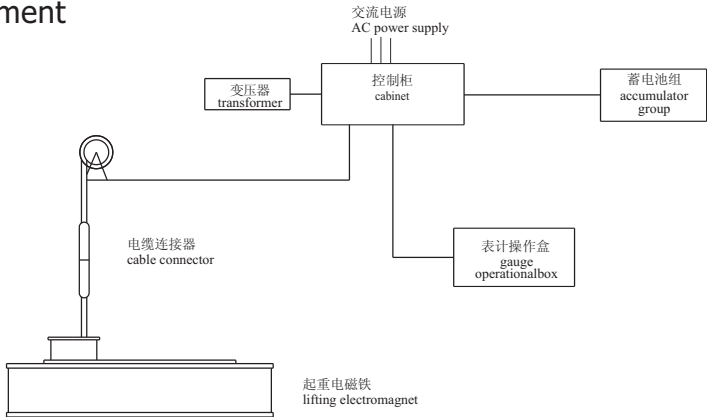
- 1、电磁铁额定电压与设备输出电压相符；电磁铁的冷态电流（冷态消耗功率）之和应小于或等于整流控制柜的输出电流（功率）。
- 2、与控制柜配套的卷扬机抱闸，必须使用直流电磁抱闸；当卷扬机抱闸线圈供电是交流时应另选用配套的逆变电源。
- 3、工作环境温度在40℃以上，或有改型、扩容等特殊要求，订货时需注明。

1. Rated voltage of the electromagnet shall match output voltage of the equipment; the total current amount (power consumption) in cold state of the electromagnet shall be less than or equal to the output current (power) of the cabinet.
2. The brake of windlass matched with the cabinet must use DC brake and a matched inverter should be adopted when the coil at brake of windlass is AC.
3. Working temperature is over 40°C. or other special requirements such as modification, capacity enlargement, etc., please state clearly when place an order.

型号说明
Model Designation



GTB系列停电保磁设备
Series GTB Battery Backup Equipment



GTB、GTBT方式构成图 GTB\GTBT Scheme Drawing

主要技术参数 Main technical data

成套设备型号 Model of a full set	GTB-9E	GTB-14E	GTB-19E	GTB-25E	GTB-32E	GTB-38E	GTB-45E
输入交流电压 input AC voltage	380V						
电源相数 phase No.	三 相 3-phase						
输出直流电压 output DC voltage	220V						
额定输出功率 rated output power	9kW	14kW	19kW	25kW	32kW	38kW	45kW
额定保磁时间 backup time	5分；10分；15分；20分；30分 (min.)						

成套设备及外形安装参考尺寸
Corollary equipment & overall dimension (for reference)

成套 设备 corollary equipment		数 量 number							外形及安装参考尺寸 (mm) overall dimension & installation size for reference						单台 质量 unit mass (kg)
名 称 Name	型 号 Model	GTB-9E-C	GTB-14E-C	GTB-19E-C	GTB-25E-C	GTB-32E-C	GTB-38E-C	GTB-45E-C	W	D	H	X	Y	安装孔 mounting hole	
Rectification control cabinet 整流控制柜	GTB-9E-C	1							1100	450	1700	1050	400	4-Φ14	180
	GTB-14E-C		1						1100	450	1700	1050	400	4-Φ14	219
	GTB-19E-C			1					1100	450	1850	1050	400	4-Φ14	230
	GTB-25E-C				1				1100	450	1850	1050	400	4-Φ14	250
	GTB-32E-C					1			1100	450	1850	1050	400	4-Φ14	265
	GTB-38E-C						1		1100	450	1950	1050	400	4-Φ14	293
	GTB-45E-C							1	1100	450	1950	1050	100	4-Φ14	310

电磁铁配套控制设备
Auxiliary Control Equipment

成套设备及外形安装参考尺寸
Corollary equipment & overall dimension (for reference)

成套设备 corollary equipment		数 量 number							外形及安装参考尺寸 (mm) overall dimension & installation size for reference						单台 质量 unit mass (kg)
名 称 Name	型 号 Model	GTBT-9E-C	GTBT-14E-C	GTBT-19E-C	GTBT-25E-C	GTBT-32E-C	GTBT-38E-C	GTBT-45E-C	W	D	H	X	Y	安装孔 mounting hole	
Rectification control cabinet 整流控制柜	GTBT-9E-C	1							1100	450	1700	1050	400	4-Φ14	180
	GTBT-14E-C		1						1100	450	1700	1050	400	4-Φ14	219
	GTBT-19E-C			1					1100	450	1850	1050	400	4-Φ14	230
	GTBT-25E-C				1				1100	450	1850	1050	400	4-Φ14	250
	GTBT-32E-C					1			1100	450	1850	1050	400	4-Φ14	265
	GTBT-38E-C						1		1100	450	1950	1050	400	4-Φ14	293
	GTBT-45E-C							1	1100	450	1950	1050	100	4-Φ14	310
Rectification transformer (attached outside) 整流变压器(外附)	ZSG-12/0.5	1							560	490	510	430	310	4-Φ12	110
	ZSG-17/0.5		1						560	490	510	430	310	4-Φ12	125
	ZSG-25/0.5				1				580	510	530	450	330	4-Φ12	150
	ZSG-30/0.5					1			680	500	610	550	320	4-Φ14	180
	ZSG-35/0.5						1		700	535	680	570	355	4-Φ14	225
	ZSG-40/0.5							1	700	535	680	570	355	4-Φ14	255
	ZSG-50/0.5							1	720	575	750	590	395	4-Φ14	280
accumulator 蓄电池	38Ah12V	18													13
	65Ah12V		18	18											22
	100Ah12V				18										31
	120Ah12V					18									37
	150Ah12V						18	18							48
accumulator rack (box) 蓄电池架箱	GN(W)N-38	1							750 (760)	372 (462)	1100 (1160)	700 (710)	332 (412)	4-Φ14	45 (84)
	GN(W)N-65		1	1					1246 (1256)	380 (470)	1150 (1210)	1196 (1206)	330 (420)	4-Φ14	57 (113)
	GN(W)N-100				1				1246 (1256)	360 (450)	1150 (1210)	1196 (1206)	310 (400)	4-Φ14	86 (141)
	GN(W)N-120					1			1296 (1306)	432 (522)	1300 (1360)	1246 (1256)	382 (472)	4-Φ14	96 (162)
	GN(W)N-150						1	1	1248 (1258)	508 (598)	1300 (1360)	1198 (1208)	458 (548)	4-Φ14	103 (171)
	表计箱 gauge box	MBP1-211S							300	180	120	200	204	4-Φ8	5
操作盒 operation box	SC-BX3-22 Φ								70	150	65	54	115	4-Φ4	0.5
报警器 alarm	BC-3A DC220V								260	230	230		82	2-Φ8	1

注：户外方式柜体厚度方向增加了50mm（即D、Y均增加50）；柜体顶盖前后各突出50mm。当行车主钩使用的是交流抱闸时需另行
配用逆变单元，柜体因为交流抱闸功率不同有所不同，具体请与本公司确认。

Note: The thickness of cabinet is increased by 50 mm (both D and Y are increased); An extra 50mm along forward & backward at the top are added. An
inverter is needed when the crane hook is AC brake. And because power of AC brake is different, the cabinet will be varied as well. Please contact us
for final confirmation, this type is for outdoor use.

GTBT系列调磁保磁设备
Magnetism regulating & sustaining equipment series GTBT

主要技术参数 Main technical data

成套设备型号 Model of a full set	GTBT-9E	GTBT-14E	GTBT-19E	GTBT-25E	GTBT-32E	GTBT-38E	GTBT-45E
输入交流电压 input AC voltage	380V						
电源相数 phase No.	三 相 3-phase						
输出直流电压 output DC voltage	0~180V 220V						
额定输出功率 rated output power	9kW	14kW	19kW	25kW	32kW	38kW	45kW
额定保磁时间 rated backup time	5分；10分；15分；20分；30分 (minute)						

注：当控制柜为户外型时，控制柜厚度方向相应增加50mm；在柜体顶部宽度方向增加30mm,前后各突出50mm,当控制柜为改进型时
无整流变压器。所控电磁铁的额定电压应与控制柜的输出电压相符，所控电磁铁冷态功率应不大于控制柜的额定输出功率。
控制柜使用环境超过40℃时，请用户在订货时特别注明。

Note: For outdoor type, add an extra 50 mm at the thickness of cabinet , 30mm at the width of the top and 50mm along both forward and backward direction;
there's no rectification transformer if the control cabinet belongs to improved type. Rated voltage of the magnet should match with output voltage of cabinet
and magnet power in cold-state shall be less than rated output power of cabinet. If ambient temperature of the cabinet is over 40℃ please state clearly when
place an order. The figs. in the bracket refers to dimension of the improved type.

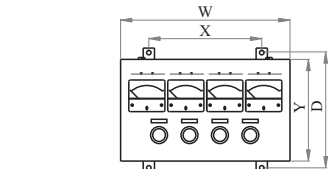
电磁铁配套控制设备
Auxiliary Control Equipment

无触点电控
Non-contact electric control equipment

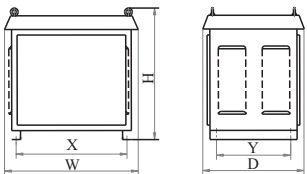


量；同时还有一个巨大的优点是用户可以根据需要，改造成强励磁、调磁等控制方式，无需更换原控制系统，也不需添加其他硬件，只要修改一下程序即可，具有极强的通用性和扩展性，极大方便了用户选型和使用。

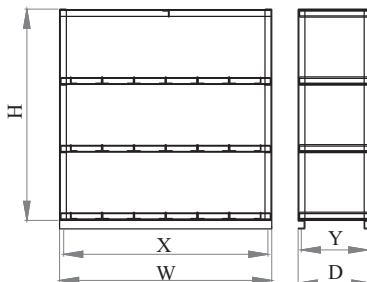
Non-contact control technology for DC electromagnet has been patented (patent authorization No.02224064. 0), featuring no electric arc or spark, no noises, no mechanical contacts, quick action, long service life, few maintenance and energy-saving owing to a feed back of the electromagnet remanence to the power net; the constant current source can guarantee the attraction power constant without distinct descending caused by the ascending of electromagnet temperature; with short demagnetization time and quick material discharge, it is more suitable for extremely frequent operation, and realizes non-gap operation. It adopts programmable control technology to guarantee the control precise, flexible and reliable, simplifies the outside connection and reduces the failure points. It adopts thyristor to control obverse and inverse excitation, saving the traditional DC contactor and greatly reducing the facility bulk; the equipment service life has been prolonged because of adopting static switch mode instead of dynamic switch mode. Except for greatly reduce maintenance cost and service workload, another big advantage is that the control mode can be improved to strong excitation mode or magnetism adjustable mode according to the user's need without exchanging old control system or adding other hardwares, just by modifying the program; featuring high general-use and extensibility, it is very convenient for users to choose and use.



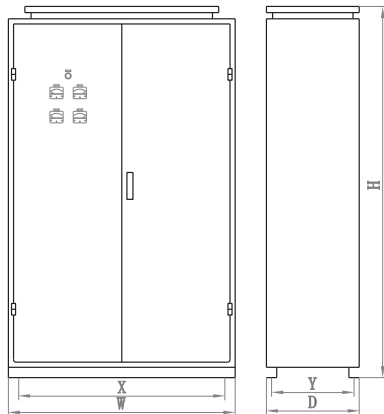
表计箱 gauge box



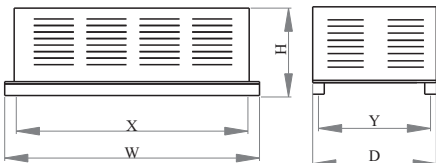
变压器 transformer



蓄电池架 accumulator bracket

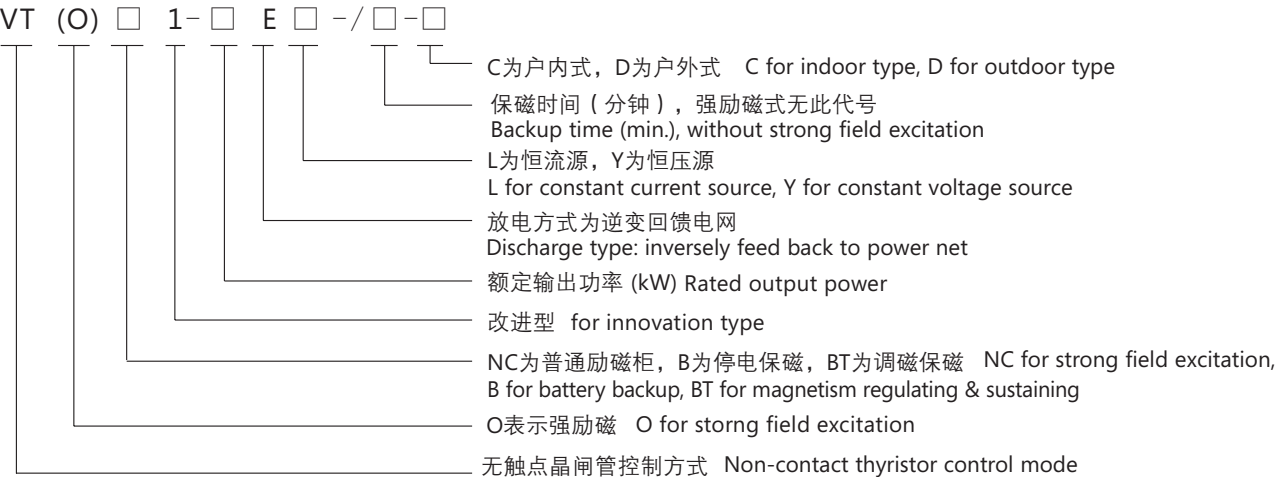


控制柜 Cabinet



电阻箱 resistance box

型号说明
Model Designation



有触点和无触点控制柜性能对比一览表
Performance contrast list for with-contact and non-contact

对比项目 Contrast items	有触点整流控制设备 Rectification control equipment with contact	无触点变流控制设备 Non-contact AC control equipment
充、退磁方式 mode of magnetization and demagnetization	直流接触器 DC contactor	数字化无触点控制 digital non-contact control
可靠性 reliability	具有自动空气开关和熔断器等短路保护 with short circuit protection such as auto air switch and fuse	除此之外，还有缺相、过流、过压、过热等 电子检测保护。 Besides, with electronic check protection for open phase, overcurrent, overvoltage, overheat and etc.
控制精度 control precision	简单电压源，电磁铁热态吸力明显下降 simple power supply, distinct descension of electromagnet's attraction power in hot-state	恒流源，稳定度≤0.5%，电磁铁吸力恒定 constant current source with stability degree ≤0.5%, constant electromagnet attraction power
维修量 service workload	较大 bigger	免维护 Min. maintenance
能耗 energy consumption	起重电磁铁储能通过电阻发热释放，能耗较大 Lifting electromagnet releases stored energy through heat dispersion of resistance with larger energy consumption.	储能逆变回馈电网，节能，较有触点方式可节能7%以上 The stored energy is inversed to feed back power net with above 7% energy economized compared to with-contact type
作业效率 work efficiency	放料时间3~5秒较慢 discharging time: 3~5 s, slower	放料时间1~2秒、快 discharging time: 1~2s, quick
作业频率 work frequency	有间隙操作，一般60% with break operation of generally 60%	无间隙操作 non-break operation
调试 debugging	容易 easy	容易 easy
扩展性、通用性	不好 not good	非常好 very good
使用寿命 service life	电弧严重、噪音大、触头熔损严重，十万次左右。 serious electric arc, loud noises, serious melting damage; around hundred thousands times	无电弧、无噪音、无机械触点，可达一百万次以上。 no electric arc, no noises, no mechanical contacts; around million times
输出特性 output characteristic	开环式电压源 open ring type voltage source	闭环式电流源，保证电磁铁吸力恒定，温升 小而缓慢，节能≥50%。 close ring type current source to guarantee constant electromagnet attraction power, with little and slow temperature rise, economizing energy of above 50%
自重 Self-weight	较重 heavier	轻20%以上 more than 20% lighter
外型 exterior	体积较大 larger bulk	体积小 small cubage

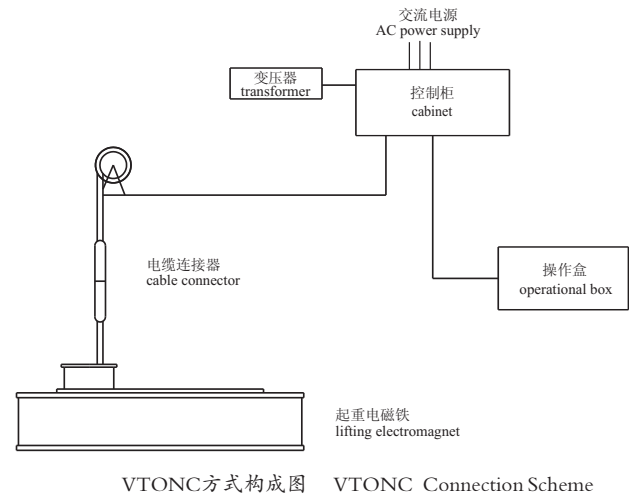
选型及注意事项 Note for Model Selection

- 1、电磁铁额定电压与控制柜电压相同；电磁铁的冷态电流（消耗功率）之和应小于或等于控制柜的输出电流（功率）。
The rated voltage of the electromagnet is the same as that of he control unit; the total amount of cold-state current (consumption power) of the electromagnet should be less than or equal to the output current (power) of the control unit.
- 2、与本控制柜配套的卷扬机抱闸，一般需使用直流电磁抱闸，如须使用交流抱闸，则必须选用配套的逆变电源。
The matched windlass for the cabinet is usually a DC brake, otherwise a mateched inverter power supply is needed for AC brake
- 3、停电保磁时间未标注者均按我公司常规产品生产。
Unstated sustaining time will be produced as our general products.
- 4、工作环境温度在40℃以上，或有改型、扩容等特殊要求，订货时需注明。
If the working temperature is above 40℃, or there are special requirements for modification, capacity enlarge and etc, please state when place any order.

VTONC系列无触点强励磁控制方式整流控制设备 Rectification control unit series VTONC in non-contact strong field excitation control mode

本系列产品采用无触点控制方式，既具有无触点控制技术优点，还具有吸料时强励磁（DC290V）搬运时弱励磁（DC220V）保持的特点，不仅可以降低消耗，而且可以使吸吊量增加，是废钢等松散物料搬运现场使用的理想配套设备，一般能使作业效率提高15%~30%。

This series which adopts non-contact control mode has advantages of non-contact control technology as well as attracting at stong field (DC 290V) while holding at weak field (DC220V). This product can save energy, increase the lifting capacity and normally improve the work efficiency up to 15%~30%, it is an ideal corollary equipment for bulk materials such as steel scrap etc.



电磁铁配套控制设备
Auxiliary Control Equipment

主要技术参数 Main technical data

型 号 model	主要参数 main data	电源相数 phase No.	输入交流电压 Input AC voltage (V)	输出直流电压 Output DC power (V)	额定输出功率 rated output power (kW)
VTONC-9E		三相 3-phase	380	290/220	15.6/9
VTONC-14E		三相 3-phase	380	290/220	24.2/14
VTONC-19E		三相 3-phase	380	290/220	32.7/19
VTONC-25E		三相 3-phase	380	290/220	43.4/25
VTONC-32E		三相 3-phase	380	290/220	55.6/32
VTONC-38E		三相 3-phase	380	290/220	66/38
VTONC-45E		三相 3-phase	380	290/220	78/45

成套设备及外形安装参考尺寸
Corollary equipment & overall dimension (for reference)

成套 设备 corollary equipment		数 量 number							外形及安装参考尺寸 (mm) overall dimension & installation size for reference						单台 质量 unit mass (kg)
名 称 Name	型 号 Model	VTONC-9E	VTONC-14E	VTONC-19E	VTONC-25E	VTONC-32E	VTONC-38E	VTONC-45E	W	D	H	X	Y	安装孔 mounting hole	
Rectification control cabinet 整流控制柜	VTONC-9E-C	1							1000	400	1510	950	400	4-Φ14	105
	VTONC-14E-C		1						1000	450	1510	950	400	4-Φ14	120
	VTONC-19E-C			1					1000	450	1510	950	400	4-Φ14	135
	VTONC-25E-C				1				1000	450	1510	950	400	4-Φ14	150
	VTONC-32E-C					1			1000	450	1510	950	400	4-Φ14	165
	VTONC-38E-C						1		1000	450	1510	950	400	4-Φ14	180
	VTONC-45E-C							1	1000	450	1560	950	400	4-Φ14	190
Rectification transformer 整流变压器	ZSG-15/0.5	1							560	490	510	430	310	4-Φ12	110
	ZSG-20/0.5		1						580	510	530	450	330	4-Φ12	150
	ZSG-25/0.5			1					610	480	580	480	300	4-Φ12	180
	ZSG-30/0.5				1				660	515	630	530	335	4-Φ14	200
	ZSG-40/0.5					1			700	535	680	570	355	4-Φ14	250
	ZSG-45/0.5						1		700	535	680	570	355	4-Φ14	265
	ZSG-55/0.5							1	720	575	750	590	395	4-Φ14	306
操作盒 operation box	SC-BX3-22Φ								115	72	65	80	54	4-Φ6.5	0.5

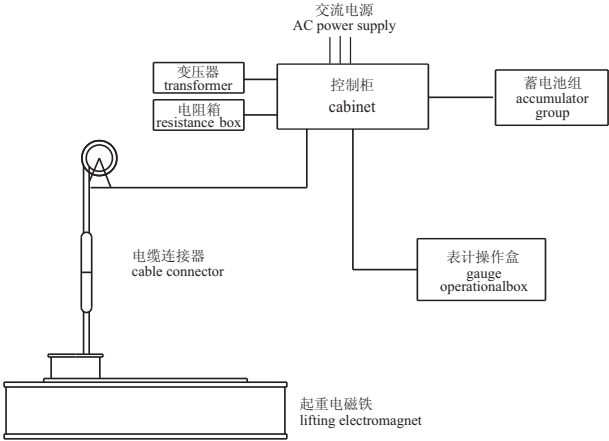
注：1、只有VTONC1才配有主整流变压器，VTONC无主整流变压器。
2、户内防护式与户外防护式柜体外形及安装尺寸相同。
Note: 1. Only VTONC1 has equipped with master Rectification transformer; VTONC has not.
2. No matter outdoor type or indoor type, their installation size and overall dimension are the same

VTB系列无触点停电保磁设备
SeriesVTB Non-contact Backup Battery Equipment



本系列产品采用无触点控制技术，实现电磁铁的励磁、退磁无触点控制，并具有停电保磁功能，停电时备用电源的切入亦采用无触点静开关方式，动作时间短，安全系数高。

This series which adopts non-contact control technology to realize the non-contact control for field excitation and demagnetization of the electromagnet has the function of magnetism sustaining when power-cut. If the electricity fails, the standby power supply which has non-contact static switch will shift in quickly and safely.



主要技术参数 Main technical data

成套设备型号 Modelsl of a full set	VTB-9E	VTB-14E	VTB-19E	VTB-25E	VTB-32E	VTB-38E	VTB-45E
输入交流电压 input AC voltage	380V						
电源相数 phase No.	三 相 3-phase						
输出直流电压 output DC voltage	220V						
额定输出功率 rated output power	9kW	14kW	19kW	25kW	32kW	38kW	45kW
额定保磁时间 backup time	5分；10分；15分；20分；30分 (min.)						

电磁铁配套控制设备
Auxiliary Control Equipment

成套设备及外形安装参考尺寸
Corollary equipment & overall dimension (for reference)

成套设备 corollary equipment		数 量 number							外形及安装参考尺寸 (mm) overall dimension & installation size for reference						单台 质量 unit mass (kg)
名 称 Name	型 号 Model	VTB-9E	VTB-14E	VTB-19E	VTB-25E	VTB-32E	VTB-38E	VTB-45E	W	D	H	X	Y	安装孔 mounting hole	
Rectification control cabinet 整流控制柜	VTB-9E	1							1100	450	1800	1000	400	4-Φ14	205
	VTB-14E		1						1100	450	1800	1000	400	4-Φ14	210
	VTB-19E			1					1100	450	1800	1000	400	4-Φ14	220
	VTB-25E				1				1100	450	1800	1000	400	4-Φ14	240
	VTB-32E					1			1100	450	1950	1000	400	4-Φ14	260
	VTB-38E						1		1100	450	1950	1000	400	4-Φ14	280
	VTB-45E							1	1100	450	1950	1000	400	4-Φ14	310
Rectification transformer (attached outside) 整流变压器(外附)	ZSG-11/0.5	1							560	490	510	430	310	4-Φ14	110
	ZSG-20/0.5		1						580	510	530	450	330	4-Φ14	150
	ZSG-25/0.5			1					610	480	580	480	300	4-Φ14	180
	ZSG-30/0.5				1				660	515	630	530	335	4-Φ14	200
	ZSG-40/0.5					1			700	535	680	570	355	4-Φ14	255
	ZSG-45/0.5						1		700	535	680	570	355	4-Φ14	265
	ZSG-55/0.5							1	720	575	750	590	395	4-Φ14	395
accumulator 蓄电池	38Ah12V	18													13
	65Ah12V		18	18											22
	100Ah12V				18										31
	120Ah12V					18									37
	150Ah12V						18	18							48
accumulator rack (box) 蓄电池架箱	GN(W)N-38	1							750 (760)	372 (462)	1100 (1160)	700 (710)	332 (412)	4-Φ14	45 (84)
	GN(W)N-65		1	1					1246 (1256)	380 (470)	1150 (1210)	1196 (1206)	330 (420)	4-Φ14	57 (113)
	GN(W)N-100				1				1246 (1256)	360 (450)	1150 (1210)	1196 (1206)	310 (400)	4-Φ14	86 (141)
	GN(W)N-120					1			1296 (1306)	432 (522)	1300 (1360)	1246 (1256)	382 (472)	4-Φ14	96 (162)
	GN(W)N-150						1	1	1248 (1258)	508 (598)	1300 (1360)	1198 (1208)	458 (548)	4-Φ14	103 (171)
表计箱 operation box	MBP2-211S	1							300	180	120	200	204	4-Φ8	5
电阻箱 resistance box		1							580	450	300	530	400	4-Φ12	25
报警器 alarm	BC-3A DC220V	1							260	230	230		82	2-Φ8	1

注： 1、 蓄电池架（箱）一栏中，括号内数值为蓄电池箱的对应值。户外使用时应选用蓄电池箱。
2、 当行车主钩使用的是交流抱闸时需另行配用逆变单元，柜体因为交流抱闸功率不同而有所不同，具体尺寸请与本公司确认。

Note : 1. In the column of Accumulator Rack (Box), the value inside the bracket refers to the corresponding value of the accumulator box.for outdoors type, accumulator box is needed.
2. If the crane hook is AC brake, inverse power supply should be provided, and the cabinets vary according to different AC brake power. For details, please contact us.

VTBT系列无触点调磁保磁设备
Non-contact magnetism regulating & sustaining equipment series VTBT



本系列产品采用无触点控制技术，实现电磁铁的励磁、退磁无触点控制，并具有停电保磁功能，停电时备用电源的切入亦采用无触点静开关方式，动作时间短，安全系数高；同时具有调磁功能，通过自由调节电磁铁的励磁电压，可方便地控制吸放钢板的张数；同时根据现场工艺可使用"分张放板"快捷按钮，快速分离钢板，实现钢板的逐张下落。

This series which adopts non-contact control technology to realize the non-contact control for excitation and demagnetization of the electromagnet has the function of sustaining magnetism power-cut. If the electricity fails, the standby power supply which has non-contact static switch will shift in quickly and safely and it also has the advantages of magnetism regulating, in other words, it can control the quantity of steel plates to be lifted conveniently through regulate the excitation voltage of the electromagnet, and can even place the plate one by one by pressing the button of placing them separately.

主要技术参数 Main technical data

成套设备型号 Models of a full set	VTBT-9E	VTBT-14E	VTBT-19E	VTBT-25E	VTBT-32E	VTBT-38E	VTBT-45E
输入交流电压 input AC voltage	380V						
电源相数 phase No.	三 相 3-phase						
输出直流电压 output DC voltage	0~180V 220V						
额定输出功率 rated output power	9kW	14kW	19kW	25kW	32kW	38kW	45kW
额定保磁时间 rated backup time	5分；10分；15分；20分；30分 (minute)						

成套设备及外形安装参考尺寸
auxiliary equipments and overall reference sizes for installation

成套设备 corollary equipment		数 量 number							外形及安装参考尺寸 (mm) overall dimension & installation size for reference						单台 质量 unit mass (kg)
名 称 Name	型 号 Model	VTBT-9E	VTBT-14E	VTBT-19E	VTBT-25E	VTBT-32E	VTBT-38E	VTBT-45E	W	D	H	X	Y	安装孔 mounting hole	
Rectification control cabinet 整流控制柜	VTBT-9E	1							1100	450	1800	1000	400	4-Φ14	205
	VTBT-14E		1						1100	450	1800	1000	400	4-Φ14	210
	VTBT-19E			1					1100	450	1800	1000	400	4-Φ14	220
	VTBT-25E				1				1100	450	1800	1000	400	4-Φ14	240
	VTBT-32E					1			1100	450	1950	1000	400	4-Φ14	260
	VTBT-38E						1		1100	450	1950	1000	400	4-Φ14	280
	VTBT-45E							1	1100	450	1950	1000	400	4-Φ14	310
Rectification transformer (attached outside) 整流变压器(外附)	ZSG-11/0.5	1							560	490	510	430	310	4-Φ14	110
	ZSG-20/0.5		1						580	510	530	450	330	4-Φ14	150
	ZSG-25/0.5			1					610	480	580	480	300	4-Φ14	180
	ZSG-30/0.5				1				660	515	630	530	335	4-Φ14	200
	ZSG-40/0.5					1			700	535	680	570	355	4-Φ14	255
	ZSG-45/0.5						1		700	535	680	570	355	4-Φ14	265
	ZSG-55/0.5							1	720	575	750	590	395	4-Φ14	395
accumulator 蓄电池	38Ah12V	18													13
	65Ah12V		18	18											22
	100Ah12V				18										31
	120Ah12V					18									37
	150Ah12V						18	18							48
accumulator rack (box) 蓄电池架(箱)	GN(W)N-38	1							750 (760)	372 (462)	1100 (1160)	700 (710)	332 (412)	4-Φ14	45 (84)
	GN(W)N-65		1	1					1246 (1256)	380 (470)	1150 (1210)	1196 (1206)	330 (420)	4-Φ14	57 (113)
	GN(W)N-100				1				1246 (1256)	360 (450)	1150 (1210)	1196 (1206)	310 (400)	4-Φ14	86 (141)
	GN(W)N-120					1			1296 (1306)	432 (522)	1300 (1360)	1246 (1256)	382 (472)	4-Φ14	96 (162)
	GN(W)N-150						1	1	1248 (1258)	508 (598)	1300 (1360)	1198 (1208)	458 (548)	4-Φ14	103 (171)
表计箱 operation box	MBP2-211S	1							300	180	120	200	204	4-Φ8	5
电阻箱 resistance box		1							580	450	300	530	400	4-Φ12	25
报警器 alarm	BC-3A DC220V	1							260	230	230		82	2-Φ8	1

注：1、蓄电池架（箱）一栏中，括号内数值为蓄电池箱的对应值。户外使用时应选用蓄电池箱。
2、当行车主钩使用的是交流抱闸时需另行配用逆变单元，柜体因为交流抱闸功率不同有所不同，具体与本公司研究。

Note: 1. In the column of Accumulator Rack (Box), the value inside the bracket refers to the corresponding value of the accumulator box. For outdoors type, accumulator box is needed.
2. If the crane hook adopts AC brake, inverter power supply is needed, and cabinet vary according to different AC brake power. For details, please contact us.